

À des fins de recherche uniquement

# Anticorps Polyclonal de lapin anti-TFEB



Numéro de catalogue: 13372-1-AP

Phare

134 Publications

## Informations de base

Numéro de catalogue:

13372-1-AP

Taille:

150ul, Concentration: 500 µg/ml by Nanodrop;

Hôte:

Lapin

Isotype:

IgG

Immunogen Catalog Number:

AG4194

Numéro d'acquisition GenBank:

BC032448

Identification du gène (NCBI):

7942

Nom complet:

transcription factor EB

MW calculé

476 aa, 53 kDa

MW observés:

65-70 kDa

Méthode de purification:

Purification par affinité contre l'antigène

Dilutions recommandées:

WB 1:1000-1:6000

IHC 1:50-1:500

IF 1:50-1:500

## Applications

Applications testées:

IF, IHC, WB, ELISA

Demandes citées:

CoIP, IF, IHC, IP, WB, Wes Immunoassay

Spécificité de l'espèce:

Humain, rat, souris

Espèces citées:

bovin, Humain, rat, singe, souris

**Remarque-IHC: il est suggéré de démasquer l'antigène avec un tampon de TE buffer pH 9,0; (\*) À défaut, le démasquage de l'antigène peut être effectué avec un tampon citrate pH 6,0.**

Contrôles positifs:

WB : cellules A549, cellules C2C12, cellules HeLa, cellules Jurkat, cellules NIH/3T3, cellules Raji, cellules RAW 264.7, tissu cardiaque de rat, tissu cardiaque de souris, tissu cérébral de rat, tissu placentaire humain

IHC : tissu de carcinome à cellules rénales humain,

IF : cellules HeLa,

## Informations générales

Transcription factor EB(TFEB) is one of the transcription factors that contain a basic HLH-ZIP domain(for DNA binding ) and HLH and ZIP domains( for loigomerization). TFEB specifically recognizes and binds to E-box sequences, which required dimerization with itself or another MiT/TFE family member. It plays a role in T-cell-dependent antibody responses to activated CD4+ T-cells and thymus-dependent humoral immunity once associated with TFE3. It also activates lysosomal gene by binding the CLEAR-box sequence in the regulatory region. It involves in the signal transduction processes required for normal vascularization of the placenta. This is a rabbit polyclonal antibody raised against the full length of human TFEB. The calculated molecular weight of TFEB is 53 kDa, but modified TFEB is about 65-70 kDa (PMID: 12837690). TFEB mainly present in the cytoplasm (PubMed:23434374). Under aberrant lysosomal storage conditions, it translocates from the cytoplasm to the nucleus (PubMed:23434374). Fisetin increases the levels of TFEB localized in nuclei (PMID: 27112200).

## Publications notables

Autrice	Pubmed ID	Journal	Application
Bin Li	32950676	Biochim Biophys Acta Mol Basis Dis	WB,IF
Zhiyuan Wu	34575099	Life (Basel)	WB,IF
Koki Abe	31499159	Biochim Biophys Acta Mol Basis Dis	WB,IF

## Stockage

Stockage:

Stocker à -20°C. Stable pendant un an après l'expédition.

Tampon de stockage:

PBS avec azoture de sodium à 0,02 % et glycérol à 50 % pH 7,3

L'aliquotage n'est pas nécessaire pour le stockage à -20C

\*\*\* Les 20ul contiennent 0,1% de BSA.

For technical support and original validation data for this product please contact:

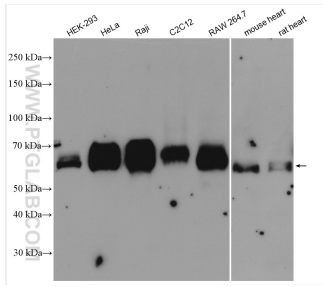
T: 1 (888) 4PTGLAB (1-888-478-4522) (toll free in USA), or 1(312) 455-8498 (outside USA)

E: proteintech@ptglab.com

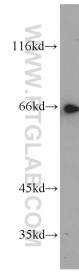
W: ptglab.com

This product is exclusively available under Proteintech Group brand and is not available to purchase from any other manufacturer.

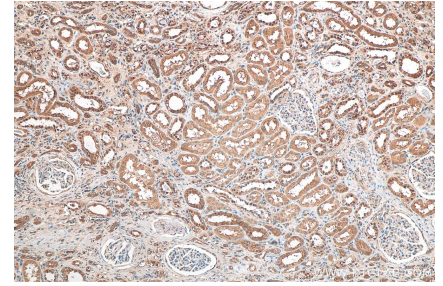
## Données de validation sélectionnées



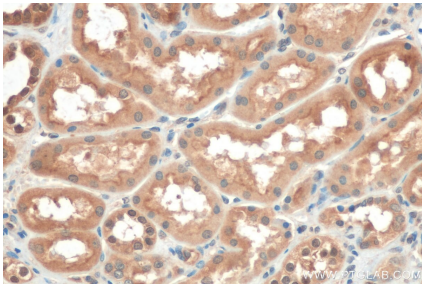
Various lysates were subjected to SDS PAGE followed by western blot with 13372-1-AP (TFEB antibody) at dilution of 1:3000 incubated at room temperature for 1.5 hours.



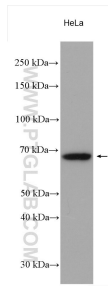
Jurkat cells were subjected to SDS PAGE followed by western blot with 13372-1-AP (TFEB antibody) at dilution of 1:1000 incubated at room temperature for 1.5 hours.



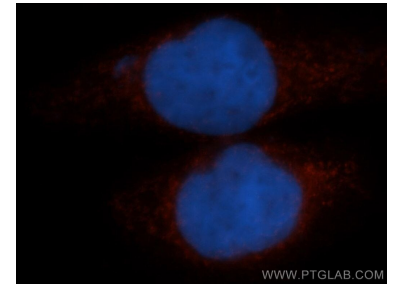
Immunohistochemical analysis of paraffin-embedded human renal cell carcinoma tissue slide using 13372-1-AP (TFEB antibody) at dilution of 1:200 (under 10x lens). Heat mediated antigen retrieval with Tris-EDTA buffer (pH 9.0).



Immunohistochemical analysis of paraffin-embedded human renal cell carcinoma tissue slide using 13372-1-AP (TFEB antibody) at dilution of 1:200 (under 40x lens). Heat mediated antigen retrieval with Tris-EDTA buffer (pH 9.0).



HeLa cells were subjected to SDS PAGE followed by western blot with 13372-1-AP (TFEB antibody) at dilution of 1:4000 incubated at room temperature for 1.5 hours.



Immunofluorescent analysis of HeLa cells, using TFEB antibody 13372-1-AP at 1:50 dilution and Rhodamine-labeled goat anti-rabbit IgG (red). Blue pseudocolor = DAPI (fluorescent DNA dye).