

À des fins de recherche uniquement

Anticorps Polyclonal de lapin anti-GLRX2



Numéro de catalogue: 13381-1-AP

Phare

5 Publications

Informations de base

Numéro de catalogue:

13381-1-AP

Taille:

150ul, Concentration: 650 µg/ml by Nanodrop;

Hôte:

Lapin

Isotype:

IgG

Immunogen Catalog Number:

AG4218

Numéro d'acquisition GenBank:

BC028113

Identification du gène (NCBI):

51022

Nom complet:

glutaredoxin 2

MW calculé

164 aa, 18 kDa

MW observés:

16 kDa

Méthode de purification:

Purification par affinité contre l'antigène

Dilutions recommandées:

WB 1:500-1:2000

IF 1:200-1:800

Applications

Applications testées:

IF, WB, ELISA

Demandes citées:

WB

Spécificité de l'espèce:

Humain, rat, souris

Espèces citées:

Humain, souris

Contrôles positifs:

WB : HGC-27 cells, cellules MCF-7

IF : cellules MCF-7,

Informations générales

GLRX2(Glutaredoxin-2) is also named as GRX2 and belongs to the glutaredoxin family. It facilitates the maintenance of cellular redox homeostasis upon treatment with apoptotic agents, thereby preventing cardiolipin oxidation and cytochrome C release. The GLRX2, which exists in a dynamic equilibrium of enzymatically active monomers and quiescent dimers, is a 16-kDa protein directed either to the nucleus or to the mitochondria through differential splicing of the first exon(PMID: 17121859). It has 2 isoforms produced by alternative splicing.

Publications notables

Autrice	Pubmed ID	Journal	Application
Yasuko Manabe	25205643	J Physiol Sci	WB
Meiling Wu	33794310	Free Radic Biol Med	WB
Jian Wen	32522629	Brain Res	WB

Stockage

Stockage:

Stocker à -20°C. Stable pendant un an après l'expédition.

Tampon de stockage:

PBS avec azoture de sodium à 0,02 % et glycérol à 50 % pH 7,3

L'aliqotage n'est pas nécessaire pour le stockage à -20C

*** Les 20ul contiennent 0,1% de BSA.

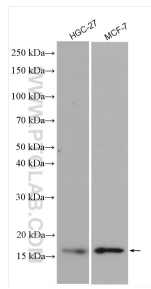
For technical support and original validation data for this product please contact:

T: 1 (888) 4PTGLAB (1-888-478-4522) (toll free in USA), or 1(312) 455-8498 (outside USA)

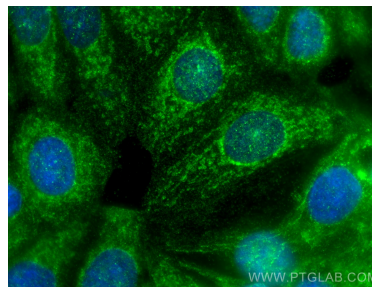
E: proteintech@ptglab.com
W: ptglab.com

This product is exclusively available under Proteintech Group brand and is not available to purchase from any other manufacturer.

Données de validation sélectionnées



Various lysates were subjected to SDS PAGE followed by western blot with 13381-1-AP (GLRX2 antibody) at dilution of 1:1000 incubated at room temperature for 1.5 hours.



Immunofluorescent analysis of (4% PFA) fixed MCF-7 cells using GLRX2 antibody (13381-1-AP) at dilution of 1:400 and CoraLite®488-Conjugated AffiniPure Goat Anti-Rabbit IgG(H+L).