

À des fins de recherche uniquement

Anticorps Polyclonal de lapin anti-NCAPD2



Numéro de catalogue: 13382-1-AP

Phare

3 Publications

Informations de base

Numéro de catalogue:
13382-1-AP

Taille:
150ul, Concentration: 350 µg/ml by Nanodrop and 200 µg/ml by Bradford method using BSA as the standard;

Hôte:
Lapin

Isotype:
IgG

Immunogen Catalog Number:
AG4219

Numéro d'acquisition GenBank:
BC028182

Identification du gène (NCBI):
9918

Nom complet:
non-SMC condensin I complex, subunit D2

MW calculé
1401 aa, 157 kDa

MW observés:
157 kDa

Méthode de purification:
Purification par affinité contre l'antigène

Dilutions recommandées:
WB 1:500-1:3000
IP 0.5-4.0 ug for IP and 1:500-1:1000 for WB
IF 1:20-1:200

Applications

Applications testées:
IF, IP, WB, ELISA

Demandes citées:
IHC, WB

Spécificité de l'espèce:
Humain, rat, souris

Espèces citées:
Humain, souris

Contrôles positifs:

WB : cellules HEK-293, cellules COLO 320, cellules HeLa, cellules K-562

IP : cellules HEK-293,

IF : cellules HeLa,

Informations générales

NCAPD2 is a regulatory subunit of the condensin complex, which is required for conversion of interphase chromatin into mitotic-like condense chromosomes. Condensin complexes are heteropentamers comprised of two SMC (structural maintenance of chromosomes) subunits and three non-SMC subunits. The C-terminus of NCAPD2 interacts with Histones H1 and H3 through their histone tails. A loss of NCAPD2 can lead to the disorganization of chromatid axes, misalignment of sister chromatids during metaphase and delayed entry into anaphase.

Publications notables

Autrice	Pubmed ID	Journal	Application
Biao Huang	31704649	iScience	WB
Zuolei Jing	34229059	Cancer Lett	WB,IHC
Xiaoying Dong	37498296	Aging (Albany NY)	IHC

Stockage

Stockage:

Stocker à -20°C. Stable pendant un an après l'expédition.

Tampon de stockage:

PBS avec azoture de sodium à 0,02 % et glycérol à 50 % pH 7,3

L'aliquotage n'est pas nécessaire pour le stockage à -20C

*** Les 20ul contiennent 0,1% de BSA.

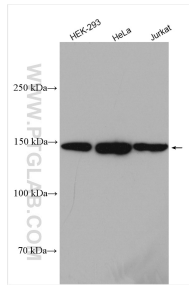
For technical support and original validation data for this product please contact:

T: 1 (888) 4PTGLAB (1-888-478-4522) (toll free in USA), or 1(312) 455-8498 (outside USA)

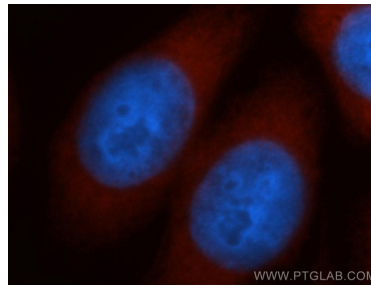
E: proteintech@ptglab.com
W: ptglab.com

This product is exclusively available under Proteintech Group brand and is not available to purchase from any other manufacturer.

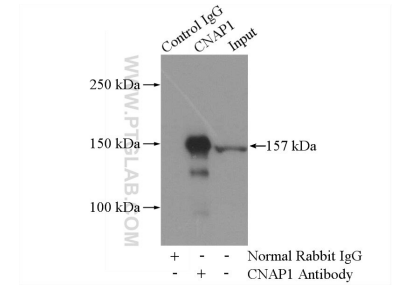
Données de validation sélectionnées



HEK-293 cells were subjected to SDS PAGE followed by western blot with 13382-1-AP (NCAPD2 antibody) at dilution of 1:1500 incubated at room temperature for 1.5 hours.



Immunofluorescent analysis of HeLa cells, using NCAPD2 antibody 13382-1-AP at 1:50 dilution and Rhodamine-labeled goat anti-rabbit IgG (red). Blue pseudocolor = DAPI (fluorescent DNA dye).



IP Result of anti-NCAPD2 (IP:13382-1-AP, 4ug; Detection:13382-1-AP 1:600) with HEK-293 cells lysate 2800ug.