

À des fins de recherche uniquement

# Anticorps Polyclonal de lapin anti-HSPH1



Numéro de catalogue: 13383-1-AP

6 Publications

## Informations de base

Numéro de catalogue: 13383-1-AP	Numéro d'acquisition GenBank: BC037553	Méthode de purification: Purification par affinité contre l'antigène
Taille: 150ul, Concentration: 500 µg/ml by Nanodrop and 387 µg/ml by Bradford method using BSA as the standard;	Identification du gène (NCBI): 10808	Dilutions recommandées: WB 1:500-1:2000 IHC 1:20-1:200
Hôte: Lapin	Nom complet: heat shock 105kDa/110kDa protein 1	
Isotype: IgG	MW calculé: 858 aa, 97 kDa	
Immunogen Catalog Number: AG4224	MW observés: 110 kDa	

## Applications

### Applications testées:

IHC, WB, ELISA

### Demandes citées:

IF, WB

### Spécificité de l'espèce:

Humain

### Espèces citées:

Humain, souris

**Remarque-IHC: il est suggéré de démasquer l'antigène avec un tampon de TE buffer pH 9,0; (\*) A défaut, 'le démasquage de l'antigène peut être 'effectué avec un tampon citrate pH 6,0.**

### Contrôles positifs:

WB : cellules MCF7, cellules HeLa, cellules Jurkat, cellules K-562, tissu cérébral humain

IHC : tissu testiculaire humain, tissu de cancer du côlon humain, tissu de cancer du foie humain, tissu de cancer du pancréas humain

## Informations générales

HSP105, also known as HSP110 or HSPH1, belongs to the heat shock protein (HSP) family. Human HSP105 is a high-molecular-weight chaperone protein expressed at constitutively low levels as a cytoplasmic  $\alpha$ -isoform and as an inducible nuclear  $\beta$ -isoform on exposure to various forms of stress. HSP105 is constitutively overexpressed in several solid tumors, including melanoma, breast, thyroid, and gastroenteric cancers, and exerts antiapoptotic functions. Recently HSP105 has been identified as a novel candidate biomarker of lymphoma aggressiveness. This antibody recognizes both HSP105 $\alpha$  and HSP105 $\beta$  isoforms. Western blot analysis using this antibody detected a major band around 100-110 kDa in Jurkat cells.

## Publications notables

Autrice	Pubmed ID	Journal	Application
Simona Cugusi	36121223	Mol Cell Biol	WB
Shan Lu	36075972	Nat Cell Biol	IF
Lihua Yang	24599545	Mol Reprod Dev	WB

## Stockage

### Stockage:

Stocker à -20°C. Stable pendant un an après l'expédition.

### Tampon de stockage:

PBS avec azoture de sodium à 0,02 % et glycérol à 50 % pH 7,3

L'aliquoteage n'est pas nécessaire pour le stockage à -20C

\*\*\* Les 20ul contiennent 0,1% de BSA.

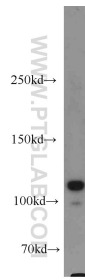
For technical support and original validation data for this product please contact:

T: 1 (888) 4PTGLAB (1-888-478-4522) (toll free in USA), or 1(312) 455-8498 (outside USA)

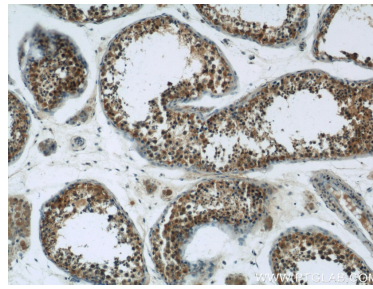
E: proteintech@ptglab.com  
W: ptglab.com

This product is exclusively available under Proteintech Group brand and is not available to purchase from any other manufacturer.

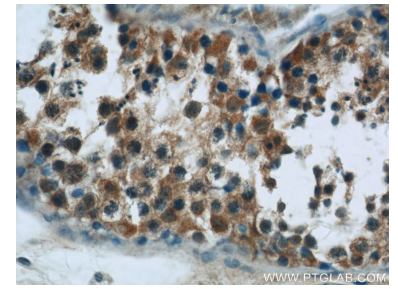
## Données de validation sélectionnées



MCF7 cells were subjected to SDS PAGE followed by western blot with 13383-1-AP (HSPH1 antibody) at dilution of 1:1000 incubated at room temperature for 1.5 hours.



Immunohistochemical analysis of paraffin-embedded human testis tissue slide using 13383-1-AP (HSPH1 Antibody) at dilution of 1:50 (under 10x lens).



Immunohistochemical analysis of paraffin-embedded human testis tissue slide using 13383-1-AP (HSPH1 Antibody) at dilution of 1:50 (under 40x lens).