

À des fins de recherche uniquement

Anticorps Polyclonal de lapin anti-CCRL2



Numéro de catalogue: 13387-1-AP

2 Publications

Informations de base

Numéro de catalogue:

13387-1-AP

Taille:

150ul, Concentration: 300 µg/ml by Nanodrop and 213 µg/ml by Bradford method using BSA as the standard;

Hôte:

Lapin

Isotype:

IgG

Immunogen Catalog Number:

AG4045

Numéro d'acquisition GenBank:

BC025717

Identification du gène (NCBI):

9034

Nom complet:

chemokine (C-C motif) receptor-like 2

MW calculé

344 aa, 40 kDa

MW observés:

47 kDa

Méthode de purification:

Purification par affinité contre l'antigène

Dilutions recommandées:

WB 1:500-1:2000

Applications

Applications testées:

FC, WB, ELISA

Demandes citées:

WB

Spécificité de l'espèce:

Humain

Espèces citées:

rat

Contrôles positifs:

WB: cellules A431.

Informations générales

Chemokine CC motif receptor-like 2 (CCRL2) is a seven-transmembrane domain receptor that shares structural and functional similarities with the family of atypical chemokine receptors (ACKRs) (PMID: 28743719). CCRL2 does not appear to be a signaling receptor, but may have a role in modulating chemokine-triggered immune responses by capturing and internalizing CCL19 or by presenting RARRES2 ligand to CMKLR1, a functional signaling receptor. CCRL2 has been found on almost all hemopoietic cells, including monocytes, macrophages, polymorphonuclear neutrophils (PMNs), T cells, dendritic cells, natural killer cells, and CD34+ progenitor cells, with PMNs expressing the highest levels (PMID: 15188357). CCRL2 is also expressed by barrier cells, such as lymphatic and blood endothelial cells and bronchial and intestinal epithelial cells (PMID: 29056935).

Publications notables

Autrice	Pubmed ID	Journal	Application
Chan Chen	32693388	Aging (Albany NY)	WB
Ayaho Omori	31965243	Pflugers Arch	WB

Stockage

Stockage:

Stocker à -20°C. Stable pendant un an après l'expédition.

Tampon de stockage:

PBS avec azoture de sodium à 0,02 % et glycérol à 50 % pH 7,3

L'aliquotage n'est pas nécessaire pour le stockage à -20°C

*** Les 20ul contiennent 0,1% de BSA.

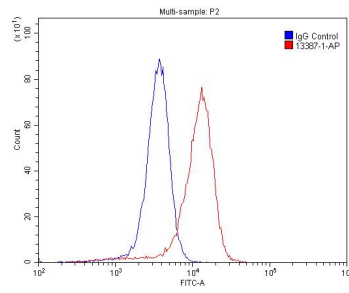
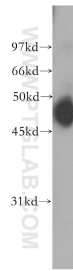
For technical support and original validation data for this product please contact:

T: 1 (888) 4PTGLAB (1-888-478-4522) (toll free in USA), or 1(312) 455-8498 (outside USA)

E: proteintech@ptglab.com
W: ptglab.com

This product is exclusively available under Proteintech Group brand and is not available to purchase from any other manufacturer.

Données de validation sélectionnées



A431 cells were subjected to SDS PAGE followed by western blot with 13387-1-AP (CCRL2 antibody) at dilution of 1:400 incubated at room temperature for 1.5 hours.

1×10^6 A431 cells were stained with .2ug CCRL2 antibody (13387-1-AP, red) and control antibody (blue). Fixed with 4% PFA blocked with 3% BSA (30 min). Alexa Fluor 488-conjugated AffiniPure Goat Anti-Rabbit IgG(H+L) with dilution 1:1500.