

À des fins de recherche uniquement

Anticorps Polyclonal de lapin anti-PFKP



Numéro de catalogue: 13389-1-AP

Phare

16 Publications

Informations de base

Numéro de catalogue:

13389-1-AP

Taille:

150ul, Concentration: 550 µg/ml by Nanodrop;

Hôte:

Lapin

Isotype:

IgG

Immunogen Catalog Number:

AG4047

Numéro d'acquisition GenBank:

BC029138

Identification du gène (NCBI):

5214

Nom complet:

phosphofructokinase, platelet

MW calculé

784 aa, 86 kDa

MW observés:

80-86 kDa

Méthode de purification:

Purification par affinité contre l'antigène

Dilutions recommandées:

WB 1:2000-1:16000

IP 0.5-4.0 µg for IP and 1:1000-1:8000 for WB

IHC 1:50-1:500

IF 1:50-1:500

Applications

Applications testées:

IF, IHC, IP, WB, ELISA

Demandes citées:

IHC, WB

Spécificité de l'espèce:

Humain, rat, souris

Espèces citées:

Humain, souris

Remarque-IHC: il est suggéré de démasquer l'antigène avec un tampon de TE buffer pH 9,0; (*) À défaut, 'le démasquage de l'antigène peut être effectué avec un tampon citrate pH 6,0.

Contrôles positifs:

WB : cellules HEK-293, cellules BxPC-3, cellules HeLa, cellules Jurkat, cellules MCF-7, cellules NIH/3T3, cellules Raji, tissu cardiaque de rat, tissu cardiaque de souris, tissu cardiaque humain, tissu de muscle squelettique de rat, tissu de muscle squelettique de souris

IP : cellules Jurkat, tissu cardiaque de souris

IHC : tissu cardiaque de souris, tissu cardiaque humain, tissu de cancer du poumon humain, tissu splénique humain

IF : cellules HeLa, cellules BxPC-3

Informations générales

PFKP(6-phosphofructokinase, platelet type) is also named as PFKF, PFK-C and belongs to the phosphofructokinase family. This form of PFK is best called the 'platelet' type and symbolized PFKP because it is the only form made by platelets, whereas fibroblasts have more than one form of PFK (Francke (1983)). PFK catalyzes the irreversible conversion of fructose-6-phosphate to fructose-1,6-bisphosphate and is a key regulatory enzyme in glycolysis. The observed molecular weight of PFKP monomer is 80-86 kDa. The molecular mass of PFKP dimer is 171 kDa (PMID: 28607489).

Publications notables

Autrice	Pubmed ID	Journal	Application
Minzhe Zhu	33059001	Biochim Biophys Acta Mol Basis Dis	WB
Xiaohan Jin	36243112	J Biol Chem	WB
Xuqian Deng	32422139	Biochem Pharmacol	WB,IHC

Stockage

Stockage:

Stocker à -20°C. Stable pendant un an après l'expédition.

Tampon de stockage:

PBS avec azoture de sodium à 0,02 % et glycérol à 50 % pH 7,3

L'aliquotage n'est pas nécessaire pour le stockage à -20C

*** Les 20ul contiennent 0,1% de BSA.

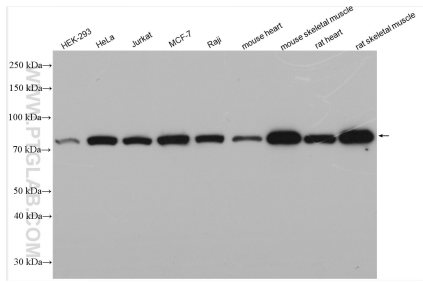
For technical support and original validation data for this product please contact:

T: 1 (888) 4PTGLAB (1-888-478-4522) (toll free in USA), or 1(312) 455-8498 (outside USA)

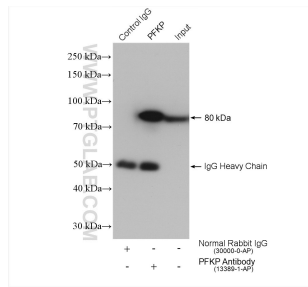
E: proteintech@ptglab.com
W: ptglab.com

This product is exclusively available under Proteintech Group brand and is not available to purchase from any other manufacturer.

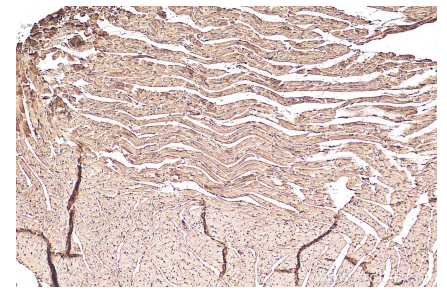
Données de validation sélectionnées



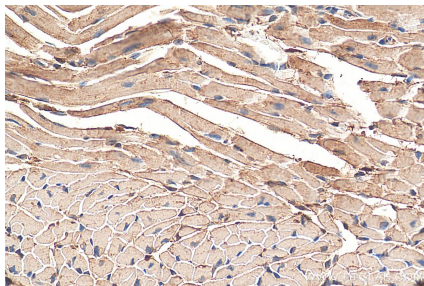
Various lysates were subjected to SDS PAGE followed by western blot with 13389-1-AP (PFKP antibody) at dilution of 1:8000 incubated at room temperature for 1.5 hours.



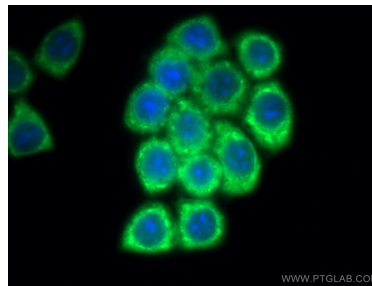
IP result of anti-PFKP(IP:13389-1-AP, 4ug; Detection:13389-1-AP 1:4000) with Jurkat cells lysate 2280 ug.



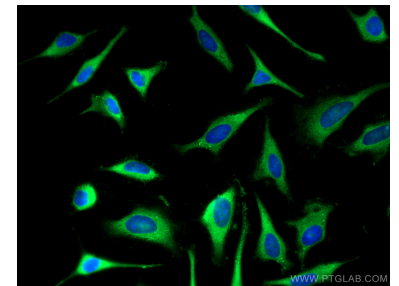
Immunohistochemical analysis of paraffin-embedded mouse heart tissue slide using 13389-1-AP (PFKP antibody) at dilution of 1:200 (under 10x lens). Heat mediated antigen retrieval with Tris-EDTA buffer (pH 9.0).



Immunohistochemical analysis of paraffin-embedded mouse heart tissue slide using 13389-1-AP (PFKP antibody) at dilution of 1:200 (under 40x lens). Heat mediated antigen retrieval with Tris-EDTA buffer (pH 9.0).



Immunofluorescent analysis of (-20°C Methanol) fixed BxPC-3 cells using PFKP antibody (13389-1-AP) at dilution of 1:200 and CoraLite®488-Conjugated AffiniPure Goat Anti-Rabbit IgG(H+L).



Immunofluorescent analysis of (-20°C Methanol) fixed HeLa cells using PFKP antibody (13389-1-AP) at dilution of 1:200 and CoraLite®488-Conjugated AffiniPure Goat Anti-Rabbit IgG(H+L).