

À des fins de recherche uniquement

Anticorps Polyclonal de lapin anti-Galectin-4



Numéro de catalogue: 13391-1-AP

Informations de base

Numéro de catalogue: 13391-1-AP	Numéro d'acquisition GenBank: BC034750	Méthode de purification: Purification par affinité contre l'antigène
Taille: 150ul, Concentration: 400 µg/ml by Nanodrop and 367 µg/ml by Bradford method using BSA as the standard;	Identification du gène (NCBI): 3960	Dilutions recommandées: WB 1:1000-1:5000 IHC 1:20-1:200 IF 1:50-1:500
Hôte: Lapin	Nom complet: lectin, galactoside-binding, soluble, 4	
Isotype: IgG	MW calculé 323 aa, 36 kDa	
Immunogen Catalog Number: AG4049	MW observés: 36 kDa	

Applications

Applications testées: FC, IF, IHC, WB, ELISA	Contrôles positifs:
Spécificité de l'espèce: Humain, rat, souris	WB : cellules HT-29, cellules COLO 320
Remarque-IHC: il est suggéré de démasquer l'antigène avec un tampon de TE buffer pH 9.0; (*) À défaut, le démasquage de l'antigène peut être effectué avec un tampon citrate pH 6,0.	IHC : tissu de cancer du sein humain, IF : cellules COLO 320,

Informations générales

Galectins are a family of animal lectins defined by shared characteristic amino-acid sequences and affinity for β -galactose-containing oligosaccharides (PMID: 8063692). Galectin-4 contains two arbohydrate recognition domains (CRDs) and is expressed in the epithelium of oral mucosa, esophagus, and intestinal and colonic mucosa (PMID: 15546874; 15115909). Aberrant expression of galectin-4 has been reported in several cancers.

Stockage

Stockage:
Stocker à -20°C. Stable pendant un an après l'expédition.
Tampon de stockage:
PBS avec azoture de sodium à 0,02 % et glycérol à 50 % pH 7,3
L'aliquotage n'est pas nécessaire pour le stockage à -20C

*** Les 20ul contiennent 0,1% de BSA.

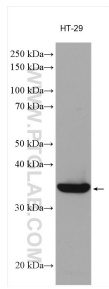
For technical support and original validation data for this product please contact:

T: 1 (888) 4PTGLAB (1-888-478-4522) (toll free in USA), or 1(312) 455-8498 (outside USA)

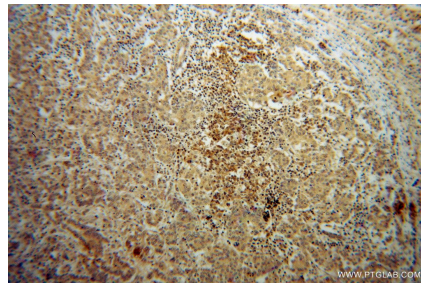
E: proteintech@ptglab.com
W: ptglab.com

This product is exclusively available under Proteintech Group brand and is not available to purchase from any other manufacturer.

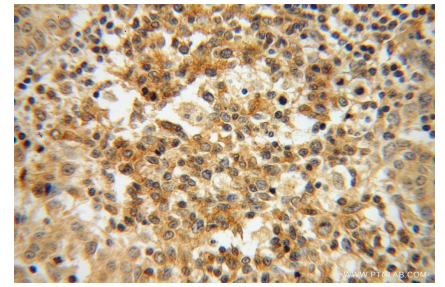
Données de validation sélectionnées



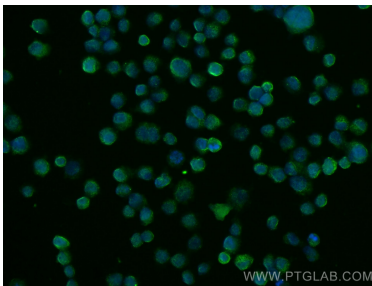
HT-29 cells were subjected to SDS PAGE followed by western blot with 13391-1-AP (Galectin-4 antibody) at dilution of 1:3000 incubated at room temperature for 1.5 hours.



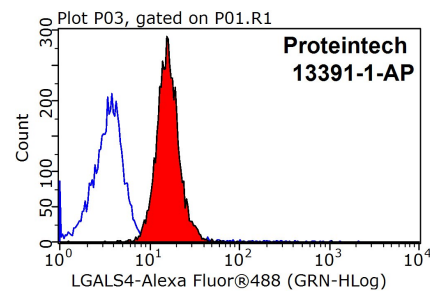
Immunohistochemical analysis of paraffin-embedded human breast cancer using 13391-1-AP (Galectin-4 antibody) at dilution of 1:50 (under 10x lens).



Immunohistochemical analysis of paraffin-embedded human breast cancer using 13391-1-AP (Galectin-4 antibody) at dilution of 1:50 (under 40x lens).



Immunofluorescent analysis of (4% PFA) fixed COLO 320 cells using Galectin-4 antibody (13391-1-AP) at dilution of 1:200 and CoraLite@488-Conjugated AffiniPure Goat Anti-Rabbit IgG(H+L).



1x10⁶ MCF-7 cells were stained with 0.2ug Galectin-4 antibody (13391-1-AP, red) and control antibody (blue). Fixed with 90% MeOH blocked with 3% BSA (30 min). Alexa Fluor 488-conjugated AffiniPure Goat Anti-Rabbit IgG(H+L) with dilution 1:1500.