

À des fins de recherche uniquement

# Anticorps Polyclonal de lapin anti-CD86



Numéro de catalogue: 13395-1-AP

105 Publications

## Informations de base

Numéro de catalogue:

13395-1-AP

Taille:

150ul, Concentration: 500 µg/ml by Nanodrop;

Hôte:

Lapin

Isotype:

IgG

Immunogen Catalog Number:

AG4063

Numéro d'acquisition GenBank:

BC040261

Identification du gène (NCBI):

942

Nom complet:

CD86 molecule

MW calculé

329 aa, 38 kDa

MW observés:

60-80 kDa

Méthode de purification:

Purification par affinité contre l'antigène

Dilutions recommandées:

WB 1:1000-1:4000

IF 1:50-1:500

## Applications

Applications testées:

FC, IF, WB, ELISA

Demandes citées:

Cell treatment, FC, IF, WB

Spécificité de l'espèce:

Humain

Espèces citées:

Humain, rat, souris

Contrôles positifs:

WB : cellules Daudi, cellules Raji, cellules Ramos

IF : cellules Raji,

## Informations générales

CD86 (also known as B7.2) is a costimulatory molecule belonging to the immunoglobulin superfamily. Primarily expressed on antigen-presenting cells (APCs), including B cells, dendritic cells, and macrophages, CD86 is the ligand for two proteins at the cell surface of T cells, CD28 antigen and cytotoxic T-lymphocyte-associated protein 4. Binding of CD86 with CD28 antigen is a costimulatory signal for activation of the T-cell. Binding of CD86 with cytotoxic T-lymphocyte-associated protein 4 negatively regulates T-cell activation and diminishes the immune response. This antibody detects a band of approximately 65-70 kDa, consistent with glycosylated form of CD86 (PMID: 8592066, 21849678).

## Publications notables

Autrice	Pubmed ID	Journal	Application
Liping Xu	36179453	Tissue Cell	IHC
Qiong Tang	36108436	Ecotoxicol Environ Saf	WB
Bo Zhang	32917854	Cell Death Dis	WB

## Stockage

Stockage:

Stocker à -20°C. Stable pendant un an après l'expédition.

Tampon de stockage:

PBS avec azoture de sodium à 0,02 % et glycérol à 50 % pH 7,3

L'aliquotage n'est pas nécessaire pour le stockage à -20C

\*\*\* Les 20ul contiennent 0,1% de BSA.

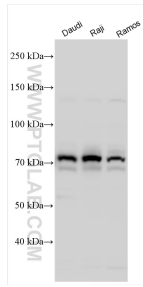
For technical support and original validation data for this product please contact:

T: 1 (888) 4PTGLAB (1-888-478-4522) (toll free in USA), or 1(312) 455-8498 (outside USA)

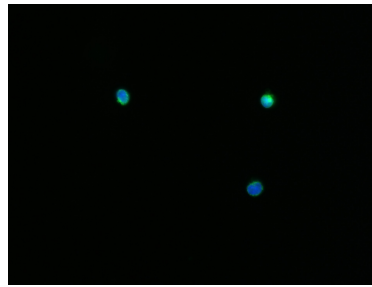
E: [proteintech@ptglab.com](mailto:proteintech@ptglab.com)  
W: [ptglab.com](http://ptglab.com)

This product is exclusively available under Proteintech Group brand and is not available to purchase from any other manufacturer.

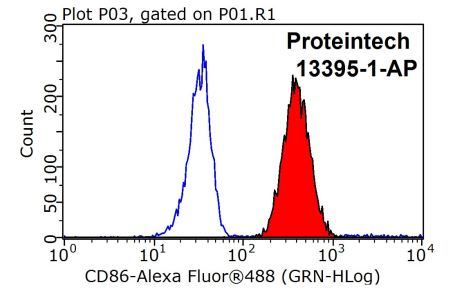
## Données de validation sélectionnées



Various lysates were subjected to SDS PAGE followed by western blot with 13395-1-AP (CD86 antibody) at dilution of 1:2000 incubated at room temperature for 1.5 hours.



Immunofluorescent analysis of (4% PFA) fixed Raji cells using CD86 antibody (13395-1-AP) at dilution of 1:200 and CoraLite@488-Conjugated AffiniPure Goat Anti-Rabbit IgG(H+L).



$1 \times 10^6$  Raji cells were stained with 0.2ug CD86 antibody (13395-1-AP, red) and control antibody (blue). Fixed with 90% MeOH blocked with 3% BSA (30 min). Alexa Fluor 488-conjugated AffiniPure Goat Anti-Rabbit IgG(H+L) with dilution 1:1000.