

À des fins de recherche uniquement

Anticorps Polyclonal de lapin anti-GPR161



Numéro de catalogue: 13398-1-AP

Phare

37 Publications

Informations de base

Numéro de catalogue: 13398-1-AP	Numéro d'acquisition GenBank: BC028163	Méthode de purification: Purification par affinité contre l'antigène
Taille: 150ul , Concentration: 700 µg/ml by Nanodrop;	Identification du gène (NCBI): 23432	Dilutions recommandées: WB 1:1000-1:8000 IF 1:200-1:800
Hôte: Lapin	Nom complet: G protein-coupled receptor 161	
Isotype: IgG	MW calculé: 529 aa, 59 kDa	
Immunogen Catalog Number: AG4221	MW observés: 59 kDa	

Applications

Applications testées: IF, WB, ELISA	Contrôles positifs: WB : tissu cérébral de souris, IF : cellules C2C12, cellules MDCK
Demandes citées: IF, WB	
Spécificité de l'espèce: canin, Humain, souris	
Espèces citées: Humain, poisson-zèbre, porc, poulet, souris	

Informations générales

GPR161 (also known as RE2) is an orphan G protein-coupled receptor and plays an important role in the Hh pathway. In the absence of Hh signals, GPR161 localizes to primary cilia and keeps the downstream GLI transcription factors in their repressor forms (PMID: 26305592). Ciliary localization of GPR161 requires TULP3 and the IFT-A complex. In the presence of SHH, GPR161 is removed from primary cilia and is internalized into recycling endosomes, preventing its activity and allowing activation of the Shh signaling. GPR161 has a calculated molecular mass of 59 kDa. The 70-kDa band probably represents a modified version of GPR161 (PMID: 18250320).

Publications notables

Autrice	Pubmed ID	Journal	Application
Xin Zong	32914682	RNA Biol	WB
Swapnil Rohidas Shinde	33185668	J Cell Biol	IF
Shichao Duan	33241915	EMBO J	WB,IF

Stockage

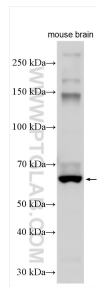
Stockage:
Stocker à -20°C. Stable pendant un an après l'expédition.
Tampon de stockage:
PBS avec azoture de sodium à 0,02 % et glycérol à 50 % pH 7,3
L'aliquotage n'est pas nécessaire pour le stockage à -20C

*** Les 20ul contiennent 0,1% de BSA.

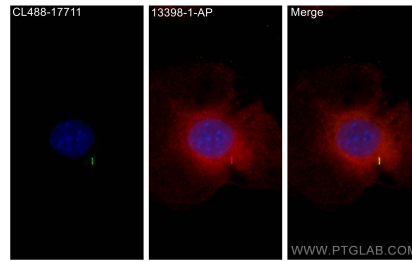
For technical support and original validation data for this product please contact:
T: 1 (888) 4PTGLAB (1-888-478-4522) (toll free in USA), or 1(312) 455-8498 (outside USA)
E: proteintech@ptglab.com
W: ptglab.com

This product is exclusively available under Proteintech Group brand and is not available to purchase from any other manufacturer.

Données de validation sélectionnées



mouse brain tissue was subjected to SDS PAGE followed by western blot with 13398-1-AP (GPR161 antibody) at dilution of 1:4000 incubated at room temperature for 1.5 hours.



Immunofluorescent analysis of (-20°C Methanol) fixed C2C12 cells using GPR161 antibody (13398-1-AP) at dilution of 1:400 and CoraLite®594-Conjugated AffiniPure Goat Anti-Rabbit IgG(H+L), CoraLite® Plus 488 ARL13B antibody (CL488-17711, green).