

À des fins de recherche uniquement

Anticorps Polyclonal de lapin anti-KIF22



Numéro de catalogue: 13403-1-AP

Phare

3 Publications

Informations de base

Numéro de catalogue:

13403-1-AP

Taille:

150ul, Concentration: 400 µg/ml by Nanodrop;

Hôte:

Lapin

Isotype:

IgG

Immunogen Catalog Number:

AG4254

Numéro d'acquisition GenBank:

BC028155

Identification du gène (NCBI):

3835

Nom complet:

kinesin family member 22

MW calculé

665 aa, 73 kDa

MW observés:

68-73 kDa

Méthode de purification:

Purification par affinité contre l'antigène

Dilutions recommandées:

WB 1:500-1:2000

IP 0.5-4.0 µg for IP and 1:200-1:1000 for WB

IHC 1:20-1:200

Applications

Applications testées:

IHC, IP, WB, ELISA

Demandes citées:

IF, IHC, WB

Spécificité de l'espèce:

Humain, rat, souris

Espèces citées:

Humain, souris

Contrôles positifs:

WB : cellules Jurkat, cellules MKN-45, cellules T-47D, tissu cardiaque humain

IP : cellules HeLa,

IHC : tissu de cancer du col de l'utérus humain, tissu de cancer du sein humain

Remarque-IHC: il est suggéré de démasquer l'antigène avec un tampon de TE buffer pH 9,0; (*) À défaut, le démasquage de l'antigène peut être effectué avec un tampon citrate pH 6,0.

Informations générales

KIF22, also known as KID (kinesin-like DNA-binding protein), is a kinesin-like DNA-binding protein known to be involved in chromosome movement during mitosis. KIF22 is a nuclear protein regulated by SIAH-1, whose level fluctuate in a cell cycle-dependent manner, increasing during pre-mitotic phases and greatly decreasing during mitosis. KIF22 localizes to the nucleus of the interphase cells upon entry into mitosis and displays some punctate cytoplasmic staining. Defects in KIF22 are the cause of spondyloepimetaphyseal dysplasia with joint laxity, type 2 (SEMDJL2).

Publications notables

Autrice	Pubmed ID	Journal	Application
Sara Bizzotto	29229923	Sci Rep	IF
Yan Guang-Rong GR	22887948	Proteomics	WB
Ze-Yuan Yu	32187050	Chin Med J (Engl)	WB,IHC

Stockage

Stockage:

Stocker à -20°C. Stable pendant un an après l'expédition.

Tampon de stockage:

PBS avec azoture de sodium à 0,02 % et glycérol à 50 % pH 7,3

L'aliquotage n'est pas nécessaire pour le stockage à -20C

*** Les 20ul contiennent 0,1% de BSA.

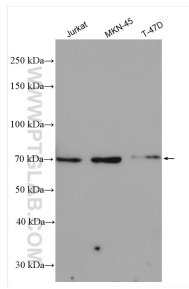
For technical support and original validation data for this product please contact:

T: 1 (888) 4PTGLAB (1-888-478-4522) (toll free in USA), or 1(312) 455-8498 (outside USA)

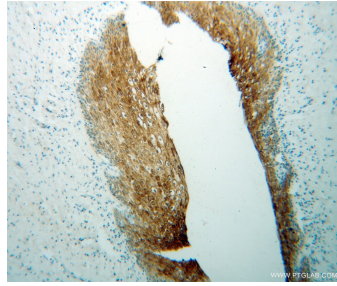
E: proteintech@ptglab.com
W: ptglab.com

This product is exclusively available under Proteintech Group brand and is not available to purchase from any other manufacturer.

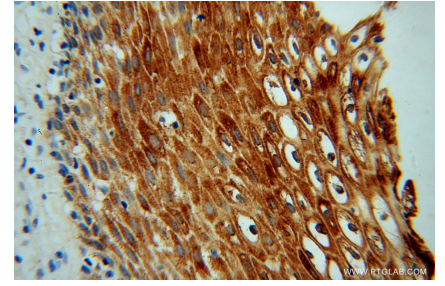
Données de validation sélectionnées



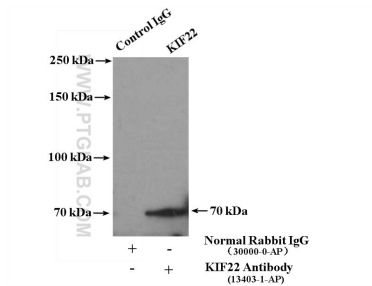
Various lysates were subjected to SDS PAGE followed by western blot with 13403-1-AP (KIF22 antibody) at dilution of 1:1000 incubated at room temperature for 1.5 hours.



Immunohistochemical analysis of paraffin-embedded human cervical cancer using 13403-1-AP (KIF22 antibody) at dilution of 1:100 (under 10x lens).



Immunohistochemical analysis of paraffin-embedded human cervical cancer using 13403-1-AP (KIF22 antibody) at dilution of 1:100 (under 40x lens).



IP Result of anti-KIF22 (IP:13403-1-AP, 4ug;
Detection:13403-1-AP 1:300) with HeLa cells lysate
4000ug.