

À des fins de recherche uniquement

Anticorps Polyclonal de lapin anti-Occludin



Numéro de catalogue: 13409-1-AP

Phare

335 Publications

Informations de base

Numéro de catalogue:

13409-1-AP

Taille:

150ul, Concentration: 900 µg/ml by Nanodrop;

Hôte:

Lapin

Isotype:

IgG

Immunogen Catalog Number:

AG4057

Numéro d'acquisition GenBank:

BC029886

Identification du gène (NCBI):

4950

Nom complet:

occludin

MW calculé

522 aa, 59 kDa

MW observés:

59 kDa

Méthode de purification:

Purification par affinité contre l'antigène

Dilutions recommandées:

WB 1:2000-1:16000

IP 0.5-4.0 µg for IP and 1:500-1:1000 for WB

IHC 1:50-1:800

Applications

Applications testées:

FC, IHC, IP, WB, ELISA

Demandes citées:

IHC, IP, WB

Spécificité de l'espèce:

Humain, rat, souris

Espèces citées:

bovin, canin, Humain, porc, poulet, rat, souris

Remarque-IHC: il est suggéré de démasquer l'antigène avec un tampon de TE buffer pH 9,0; (*) À défaut, le démasquage de l'antigène peut être effectué avec un tampon citrate pH 6,0.

Contrôles positifs:

WB : cellules A431, tissu de côlon de souris, tissu hépatique de rat, tissu hépatique de souris, tissu hépatique humain, tissu rénal de rat, tissu rénal de souris, tissu rénal humain

IP : tissu hépatique de souris,

IHC : tissu de cancer du sein humain,

Informations générales

Occludin is an integral membrane protein located at the tight junction. It is a tetraspanin protein with four transmembrane domains, intracellular N and C termini and two extracellular loops. Occludin plays a role in the formation and regulation of the tight junction paracellular permeability barrier. Occludin can exist in different isoforms, owing to modifications at the posttranscriptional and posttranslational levels, the monomeric occludin migrates as 53-65 kDa on SDS-PAGE (PMID: 22083955; 19457074).

Publications notables

Autrice	Pubmed ID	Journal	Application
Biqi Han	36209609	J Hazard Mater	WB
Qi-Le Zuo	34590865	J Agric Food Chem	IHC
Cheng-Kuei Wu	36175474	Sci Rep	WB

Stockage

Stockage:

Stocker à -20°C. Stable pendant un an après l'expédition.

Tampon de stockage:

PBS avec azotate de sodium à 0,02 % et glycérol à 50 % pH 7,3

L'aliquotage n'est pas nécessaire pour le stockage à -20C

*** Les 20ul contiennent 0,1% de BSA.

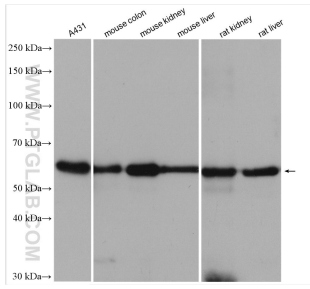
For technical support and original validation data for this product please contact:

T: 1 (888) 4PTGLAB (1-888-478-4522) (toll free in USA), or 1(312) 455-8498 (outside USA)

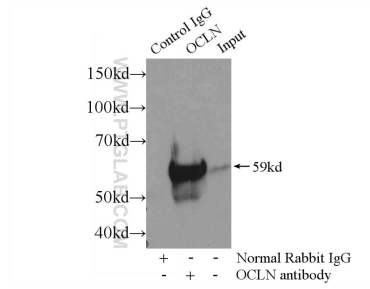
E: proteintech@ptglab.com
W: ptglab.com

This product is exclusively available under Proteintech Group brand and is not available to purchase from any other manufacturer.

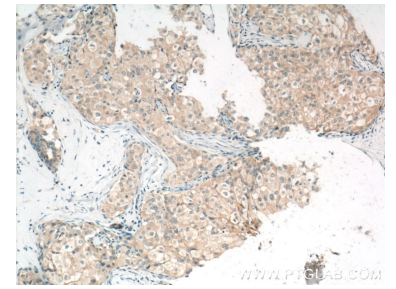
Données de validation sélectionnées



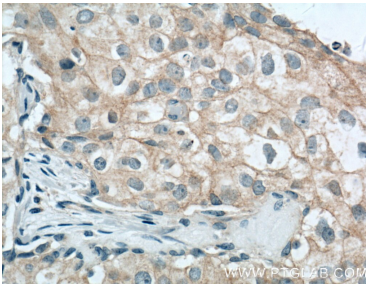
Various lysates were subjected to SDS PAGE followed by western blot with 13409-1-AP (Occludin antibody) at dilution of 1:8000 incubated at room temperature for 1.5 hours.



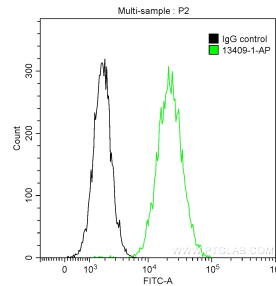
IP Result of anti-Occludin (IP:13409-1-AP, 3ug; Detection:13409-1-AP 1:500) with mouse liver tissue lysate 6400ug.



Immunohistochemical analysis of paraffin-embedded human breast cancer tissue slide using 13409-1-AP (Occludin Antibody) at dilution of 1:800 (under 10x lens). Heat mediated antigen retrieval with Tris-EDTA buffer (pH 9.0).



Immunohistochemical analysis of paraffin-embedded human breast cancer tissue slide using 13409-1-AP (Occludin Antibody) at dilution of 1:800 (under 40x lens). Heat mediated antigen retrieval with Tris-EDTA buffer (pH 9.0).



1X10⁶ A431 cells were stained with 0.2 ug Anti-Human Occludin (13409-1-AP) and Coralite®488-Conjugated AffiniPure Goat Anti-Rabbit IgG(H+L) at dilution 1:1000 (green), or stained with 0.2 ug isotype control antibody and Coralite®488-Conjugated AffiniPure Goat Anti-Rabbit IgG(H+L) at dilution 1:1000 (black). Cells were fixed with 90% MeOH.