

À des fins de recherche uniquement

Anticorps Polyclonal de lapin anti-TRPV6



Numéro de catalogue: 13411-1-AP

9 Publications

Informations de base

Numéro de catalogue:

13411-1-AP

Taille:

150ul, Concentration: 800 µg/ml by Nanodrop and 507 µg/ml by Bradford method using BSA as the standard;

Hôte:

Lapin

Isotype:

IgG

Immunogen Catalog Number:

AG4060

Numéro d'acquisition GenBank:

BC034814

Identification du gène (NCBI):

55503

Nom complet:

transient receptor potential cation channel, subfamily V, member 6

MW calculé

725 aa, 83 kDa

MW observés:

83 kDa, 70 kDa

Méthode de purification:

Purification par affinité contre l'antigène

Dilutions recommandées:

WB 1:500-1:2000

IP 0.5-4.0 ug for IP and 1:200-1:1000 for WB

IF 1:10-1:100

Applications

Applications testées:

IF, IP, WB, ELISA

Demandes citées:

IF, WB

Spécificité de l'espèce:

Humain, rat, souris

Espèces citées:

Humain, souris

Contrôles positifs:

WB : tissu placentaire humain, cellules PC-3, tissu rénal de souris

IP : tissu rénal de souris,

IF : cellules HeLa,

Informations générales

TRPV6, also named as CAT1 or ECaC2, is a member of the transient receptor potential (TRP) family of membrane proteins. Unlike most TRP channels, TRPV6 and its closest relative, TRPV5, are calcium-selective channels. TRPV6 is highly expressed in the proximal intestine, placenta and exocrine tissues (PMID: 12869611). It is probably involved in calcium absorption in various tissues, including calcium reabsorption in kidney. TRPV6 is overexpressed in some cancers and exhibits oncogenic potential.

Publications notables

Autrice	Pubmed ID	Journal	Application
Chenyue Liu	30459613	Front Pharmacol	WB
Jian-Hao Liu	33142290	Pharmacology	WB
Zhichao Li	29758225	J Mol Cell Cardiol	WB

Stockage

Stockage:

Stocker à -20°C. Stable pendant un an après l'expédition.

Tampon de stockage:

PBS avec azoture de sodium à 0,02 % et glycérol à 50 % pH 7,3

L'aliquotage n'est pas nécessaire pour le stockage à -20C

*** Les 20ul contiennent 0,1% de BSA.

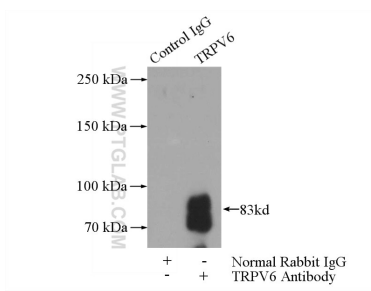
For technical support and original validation data for this product please contact:

T: 1 (888) 4PTGLAB (1-888-478-4522) (toll free in USA), or 1(312) 455-8498 (outside USA)

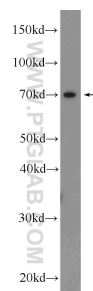
E: proteintech@ptglab.com
W: ptglab.com

This product is exclusively available under Proteintech Group brand and is not available to purchase from any other manufacturer.

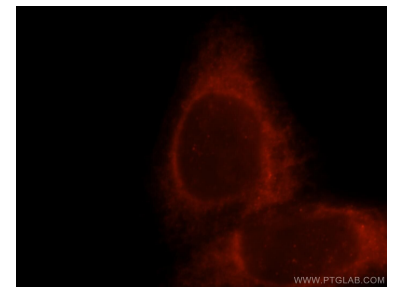
Données de validation sélectionnées



IP Result of anti-TRPV6 (IP:13411-1-AP, 4ug; Detection:13411-1-AP 1:300) with mouse kidney tissue lysate 4000ug.



human placenta tissue were subjected to SDS PAGE followed by western blot with 13411-1-AP (TRPV6 Antibody) at dilution of 1:1000 incubated at room temperature for 1.5 hours.



Immunofluorescent analysis of HeLa cells, using TRPV6 antibody 13411-1-AP at 1:25 dilution and Rhodamine-labeled goat anti-rabbit IgG (red).