

À des fins de recherche uniquement

Anticorps Polyclonal de lapin anti-RAB27B



Numéro de catalogue: 13412-1-AP

Phare

37 Publications

Informations de base

Numéro de catalogue: 13412-1-AP	Numéro d'acquisition GenBank: BC027474	Méthode de purification: Purification par affinité contre l'antigène
Taille: 150ul, Concentration: 750 µg/ml by Nanodrop;	Identification du gène (NCBI): 5874	Dilutions recommandées: WB 1:500-1:2000 IHC 1:50-1:500 IF 1:50-1:500
Hôte: Lapin	Nom complet: RAB27B, member RAS oncogene family	
Isotype: IgG	MW calculé: 218 aa, 25 kDa	
Immunogen Catalog Number: AG4064	MW observés: 25-30 kDa	

Applications

Applications testées:

IF, IHC, WB, ELISA

Demandes citées:

IF, IHC, WB

Spécificité de l'espèce:

Humain, rat, souris

Espèces citées:

canin, Humain, rat, souris

Remarque-IHC: il est suggéré de démasquer l'antigène avec un tampon de TE buffer pH 9,0; (*) À défaut, le démasquage de l'antigène peut être effectué avec un tampon citrate pH 6,0.

Contrôles positifs:

WB : tissu splénique de rat, cellules A375, cellules DU 145, cellules MCF-7, cellules PC-3

IHC : tissu de cancer du pancréas humain, tissu de cancer de la prostate humaine, tissu de cancer de l'oesophage humain, tissu de cancer du côlon humain, tissu de cancer du foie humain, tissu de cancer du sein humain, tissu testiculaire humain

IF : cellules HeLa,

Informations générales

The Rab27 GTPase subfamily consists of two closely related homologs, Rab27a and Rab27b. Northern blot analysis revealed that Rab27b is expressed significantly only in testis, in which the predominant transcript was 1.4 kb in size. An 8-kb mRNA of unknown origin was detected in many tissues. Rab27b is associated with tubulovesicle membranes in the parietal cell and Rab27b may play a role in stimulation-associated membrane recruitment and gastric acid secretion. Rab27b is recently reported as a marker for breast cancer progression. It regulates invasive growth and metastasis in ER-positive breast cancer cell lines, and increased expression is associated with poor prognosis in humans.

Publications notables

Autrice	Pubmed ID	Journal	Application
Jian Guo	32989094	J Immunol	WB
Xueqiang Peng	32949647	Biochim Biophys Acta Mol Cell Res	WB
Hiroshi Gomi	28914590	J Histochem Cytochem	WB,IHC

Stockage

Stockage:

Stocker à -20°C. Stable pendant un an après l'expédition.

Tampon de stockage:

PBS avec azoture de sodium à 0,02 % et glycérol à 50 % pH 7,3

L'aliquotage n'est pas nécessaire pour le stockage à -20C

*** Les 20ul contiennent 0,1% de BSA.

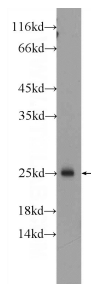
For technical support and original validation data for this product please contact:

T: 1 (888) 4PTGLAB (1-888-478-4522) (toll free in USA), or 1(312) 455-8498 (outside USA)

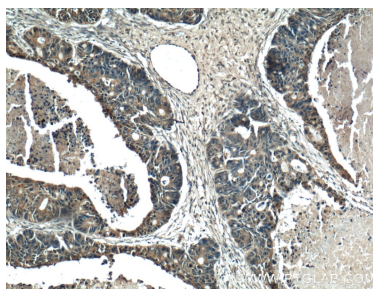
E: proteintech@ptglab.com
W: ptglab.com

This product is exclusively available under Proteintech Group brand and is not available to purchase from any other manufacturer.

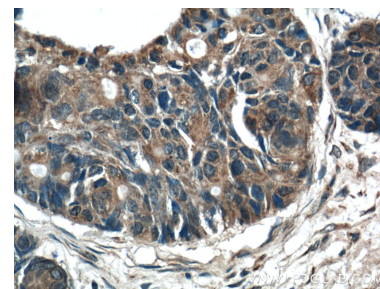
Données de validation sélectionnées



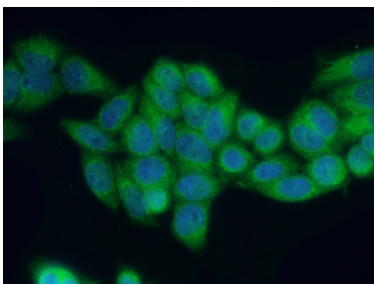
rat spleen tissue were subjected to SDS PAGE followed by western blot with 13412-1-AP (RAB27B Antibody) at dilution of 1:1000 incubated at room temperature for 1.5 hours.



Immunohistochemical analysis of paraffin-embedded human pancreas cancer tissue slide using 13412-1-AP (RAB27B Antibody) at dilution of 1:200 (under 10x lens).



Immunohistochemical analysis of paraffin-embedded human pancreas cancer tissue slide using 13412-1-AP (RAB27B Antibody) at dilution of 1:200 (under 40x lens).



Immunofluorescent analysis of (4% PFA) fixed HeLa cells using 13412-1-AP (RAB27B antibody) at dilution of 1:50 and Alexa Fluor 488-conjugated AffiniPure Goat Anti-Rabbit IgG(H+L).