

À des fins de recherche uniquement

# Anticorps Polyclonal de lapin anti-PPP3CA



Numéro de catalogue: 13422-1-AP

10 Publications

## Informations de base

Numéro de catalogue:

13422-1-AP

Taille:

150ul, Concentration: 750 µg/ml by Nanodrop and 500 µg/ml by Bradford method using BSA as the standard;

Hôte:

Lapin

Isotype:

IgG

Immunogen Catalog Number:

AG4203

Numéro d'acquisition GenBank:

BC025714

Identification du gène (NCBI):

5530

Nom complet:

protein phosphatase 3 (formerly 2B), catalytic subunit, alpha isoform

MW calculé

59 kDa

MW observés:

59 kDa

Méthode de purification:

Purification par affinité contre l'antigène

Dilutions recommandées:

WB 1:1000-1:8000

IP 0.5-4.0 ug for IP and 1:500-1:2000 for WB

IHC 1:50-1:500

IF 1:20-1:200

## Applications

Applications testées:

FC, IF, IHC, IP, WB, ELISA

Demandes citées:

IF, WB

Spécificité de l'espèce:

Humain, souris

Espèces citées:

Humain, poulet, souris

**Remarque-IHC: il est suggéré de démasquer l'antigène avec un tampon de TE buffer pH 9,0; (\*) À défaut, 'le démasquage de l'antigène peut être 'effectué avec un tampon citrate pH 6,0.**

Contrôles positifs:

WB : tissu de muscle squelettique de souris, cellules SH-SY5Y, tissu cardiaque de souris

IP : tissu cardiaque de souris,

IHC : tissu de cancer du côlon humain, tissu de cancer du col de l'utérus humain

IF : cellules SH-SY5Y,

## Informations générales

PPP3CA, also called calcineurin A $\alpha$ , is the only serine/threonine protein phosphatase under the control of Ca $^{2+}$ /calmodulin, and plays a critical role in the coupling of Ca $^{2+}$  signals to cellular responses. Ca $^{2+}$  signaling plays a central role in hypertrophic growth of cardiac and skeletal muscle in response to mechanical load and a variety of signals. Therefore, PPP3CA plays an important role in muscle differentiation, especially in muscle fiber type conversion. It is also involved in osteoclast regulation, regulating bone formation through an effect on osteoblast differentiation.

## Publications notables

Autrice	Pubmed ID	Journal	Application
Armagan Caner	34580765	J Membr Biol	WB
Xiju He	28526717	Proc Natl Acad Sci U S A	WB
Yuetao Wen	28299629	Neurochem Res	WB,IF

## Stockage

Stockage:

Stocker à -20°C. Stable pendant un an après l'expédition.

Tampon de stockage:

PBS avec azoture de sodium à 0,02 % et glycérol à 50 % pH 7,3

L'aliquotage n'est pas nécessaire pour le stockage à -20C

\*\*\* Les 20ul contiennent 0,1% de BSA.

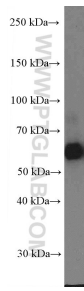
For technical support and original validation data for this product please contact:

T: 1 (888) 4PTGLAB (1-888-478-4522) (toll free in USA), or 1(312) 455-8498 (outside USA)

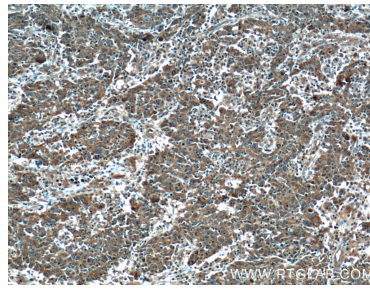
E: proteintech@ptglab.com  
W: ptglab.com

This product is exclusively available under Proteintech Group brand and is not available to purchase from any other manufacturer.

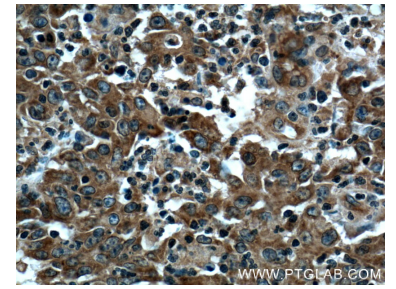
## Données de validation sélectionnées



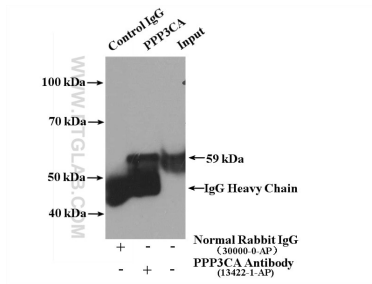
mouse skeletal muscle tissue were subjected to SDS PAGE followed by western blot with 13422-1-AP (PPP3CA Antibody) at dilution of 1:4000 incubated at room temperature for 1.5 hours.



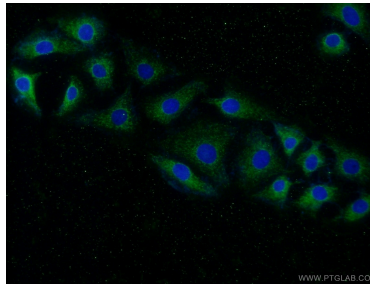
Immunohistochemical analysis of paraffin-embedded human colon cancer tissue slide using 13422-1-AP (PPP3CA Antibody) at dilution of 1:200 (under 10x lens). Heat mediated antigen retrieval with Tris-EDTA buffer (pH 9.0).



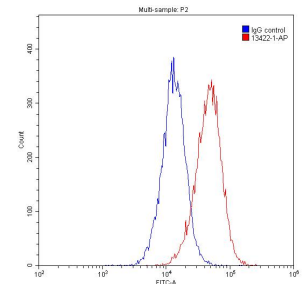
Immunohistochemical analysis of paraffin-embedded human colon cancer tissue slide using 13422-1-AP (PPP3CA Antibody) at dilution of 1:200 (under 40x lens). Heat mediated antigen retrieval with Tris-EDTA buffer (pH 9.0).



IP result of anti-PPP3CA (IP:13422-1-AP, 4ug; Detection:13422-1-AP 1:1000) with mouse heart tissue lysate 4000 ug.



Immunofluorescent analysis of (-20°C Ethanol) fixed SH-SY5Y cells using 13422-1-AP (PPP3CA antibody) at dilution of 1:50 and Alexa Fluor 488-conjugated AffiniPure Goat Anti-Rabbit IgG(H+L).



1x10<sup>6</sup> HeLa cells were stained with 0.20ug PPP3CA antibody (13422-1-AP, red) and control antibody (blue). Fixed with 90% MeOH.