

À des fins de recherche uniquement

Anticorps Polyclonal de lapin anti-E2F8



Numéro de catalogue: 13425-1-AP

2 Publications

Informations de base

Numéro de catalogue:

13425-1-AP

Taille:

150ul, Concentration: 500 µg/ml by Nanodrop and 287 µg/ml by Bradford method using BSA as the standard;

Hôte:

Lapin

Isotype:

IgG

Immunogen Catalog Number:

AG4216

Numéro d'acquisition GenBank:

BC028244

Identification du gène (NCBI):

79733

Nom complet:

E2F transcription factor 8

MW calculé

867 aa, 94 kDa

MW observés:

105 kDa

Méthode de purification:

Purification par affinité contre l'antigène

Dilutions recommandées:

WB 1:500-1:1000

IP 0.5-4.0 ug for IP and 1:500-1:1000 for WB

Applications

Applications testées:

IP, WB, ELISA

Demandes citées:

ChIP, WB

Spécificité de l'espèce:

Humain

Espèces citées:

Humain

Contrôles positifs:

WB : cellules HeLa, cellules HEK-293

IP : cellules HEK-293,

Informations générales

E2F8 is one E2F transcription factor that is essential for orchestrating expression of genes required for cell cycle progression, proliferation, apoptosis and differentiation. E2F8 shows a high degree of resemblance to E2F7 and shares the unique structure of E2F7 by having two distinct domains exhibiting a high degree of similarity to the DNA-binding domain of the E2F family. Together with E2F7, they possess two DNA-binding domains that are predicted to interact with each other. E2F8 binds consensus E2F sites in a DP-independent manner and represses transcription of E2F-regulated promoters. Ectopic expression of E2F8 inhibits cellular proliferation. The calculated molecular weight of E2F8 is 94 kDa, but modified E2F8 is about 105 kDa. (PMID: 15897886)

Publications notables

Autrice	Pubmed ID	Journal	Application
Xiangling Feng	35088582	Adv Sci (Weinh)	WB, ChIP
Yinan Chen	29341117	Int J Cancer	WB

Stockage

Stockage:

Stocker à -20°C. Stable pendant un an après l'expédition.

Tampon de stockage:

PBS avec azote de sodium à 0,02 % et glycérol à 50 % pH 7,3

L'aliquotage n'est pas nécessaire pour le stockage à -20C

*** Les 20ul contiennent 0,1% de BSA.

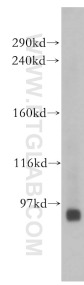
For technical support and original validation data for this product please contact:

T: 1 (888) 4PTGLAB (1-888-478-4522) (toll free in USA), or 1(312) 455-8498 (outside USA)

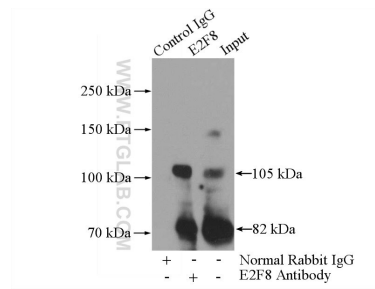
E: proteintech@ptglab.com
W: ptglab.com

This product is exclusively available under Proteintech Group brand and is not available to purchase from any other manufacturer.

Données de validation sélectionnées



HeLa cells were subjected to SDS PAGE followed by western blot with 13425-1-AP (E2F8 antibody) at dilution of 1:1000 incubated at room temperature for 1.5 hours.



IP Result of anti-E2F8 (IP:13425-1-AP, 4ug; Detection:13425-1-AP 1:500) with HEK-293 cells lysate 2800ug.