

À des fins de recherche uniquement

Anticorps Polyclonal de lapin anti-DLAT



Numéro de catalogue: 13426-1-AP

Phare

15 Publications

Informations de base

Numéro de catalogue:

13426-1-AP

Taille:

150ul, Concentration: 550 µg/ml by Nanodrop;

Hôte:

Lapin

Isotype:

IgG

Immunogen Catalog Number:

AG4226

Numéro d'acquisition GenBank:

BC039084

Identification du gène (NCBI):

1737

Nom complet:

dihydroliipoamide S-acetyltransferase

MW calculé

647 aa, 70 kDa

MW observés:

69-70 kDa

Méthode de purification:

Purification par affinité contre l'antigène

Dilutions recommandées:

WB 1:2000-1:10000

IP 0.5-4.0 ug for IP and 1:500-1:2000 for WB

IHC 1:500-1:2000

IF 1:50-1:500

Applications

Applications testées:

IF, IHC, IP, WB, ELISA

Demandes citées:

IF, IHC, IP, WB

Spécificité de l'espèce:

Humain, rat, souris

Espèces citées:

Humain, Lapin, rat, souris

Remarque-IHC: il est suggéré de démasquer l'antigène avec un tampon de TE buffer pH 9,0; (*) À défaut, le démasquage de l'antigène peut être effectué avec un tampon citrate pH 6,0.

Contrôles positifs:

WB : cellules HeLa, cellules A431, cellules HEK-293, cellules HepG2, cellules Jurkat, cellules LNCaP, cellules MCF-7

IP : cellules HepG2,

IHC : tissu de cancer du foie humain, tissu rénal de souris

IF : cellules HepG2,

Informations générales

Publications notables

Autrice	Pubmed ID	Journal	Application
Jinke Huang	36389705	Front Immunol	IHC
Hengshuai Zhang	34804174	Evid Based Complement Alternat Med	WB
Yan-Ru Cui	35397283	Phytomedicine	WB,IP

Stockage

Stockage:

Stocker à -20°C. Stable pendant un an après l'expédition.

Tampon de stockage:

PBS avec azoture de sodium à 0,02 % et glycérol à 50 % pH 7,3

L'aliquotage n'est pas nécessaire pour le stockage à -20C

*** Les 20ul contiennent 0,1% de BSA.

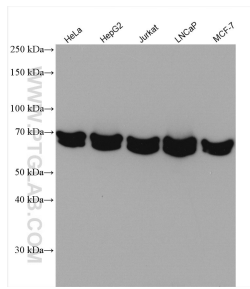
For technical support and original validation data for this product please contact:

T: 1 (888) 4PTGLAB (1-888-478-4522) (toll free in USA), or 1(312) 455-8498 (outside USA)

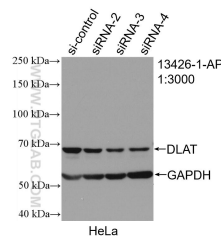
E: proteintech@ptglab.com
W: ptglab.com

This product is exclusively available under Proteintech Group brand and is not available to purchase from any other manufacturer.

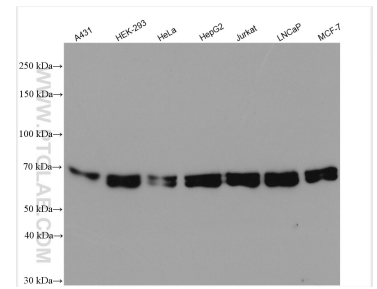
Données de validation sélectionnées



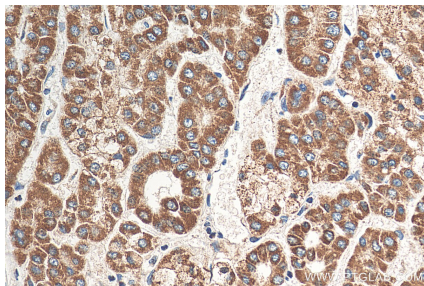
Various lysates were subjected to SDS PAGE followed by western blot with 13426-1-AP (DLAT antibody) at dilution of 1:5000 incubated at room temperature for 1.5 hours.



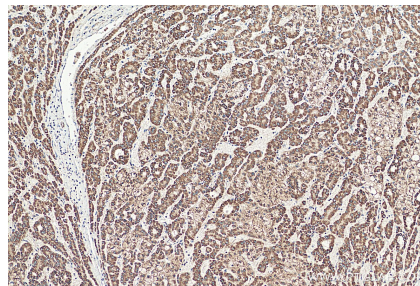
WB result of DLAT antibody (13426-1-AP; 1:3000; incubated at room temperature for 1.5 hours) with sh-Control and sh-DLAT transfected HeLa cells.



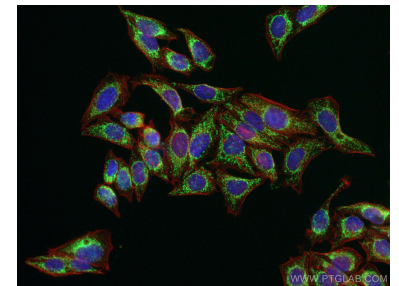
Various lysates were subjected to SDS PAGE followed by western blot with 13426-1-AP (DLAT antibody) at dilution of 1:30000 incubated at room temperature for 1.5 hours.



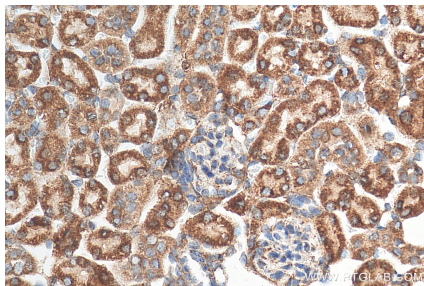
Immunohistochemical analysis of paraffin-embedded human liver cancer tissue slide using 13426-1-AP (DLAT antibody) at dilution of 1:1000 (under 40x lens). Heat mediated antigen retrieval with Tris-EDTA buffer (pH 9.0).



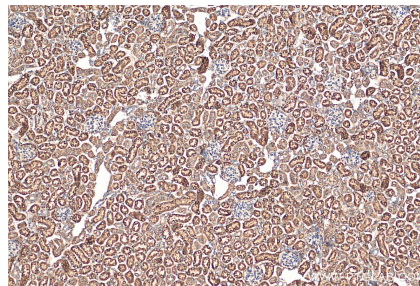
Immunohistochemical analysis of paraffin-embedded human liver cancer tissue slide using 13426-1-AP (DLAT antibody) at dilution of 1:1000 (under 10x lens). Heat mediated antigen retrieval with Tris-EDTA buffer (pH 9.0).



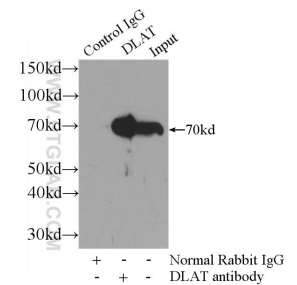
Immunofluorescent analysis of (4% PFA) fixed HepG2 cells using DLAT antibody (13426-1-AP) at dilution of 1:200 and CoraLite@488-Conjugated AffiniPure Goat Anti-Rabbit IgG(H+L), CL594-Phalloidin (red).



Immunohistochemical analysis of paraffin-embedded mouse kidney tissue slide using 13426-1-AP (DLAT antibody) at dilution of 1:1000 (under 40x lens). Heat mediated antigen retrieval with Tris-EDTA buffer (pH 9.0).



Immunohistochemical analysis of paraffin-embedded mouse kidney tissue slide using 13426-1-AP (DLAT antibody) at dilution of 1:1000 (under 10x lens). Heat mediated antigen retrieval with Tris-EDTA buffer (pH 9.0).



IP Result of anti-DLAT (IP:13426-1-AP, 3ug; Detection:13426-1-AP 1:1000) with HepG2 cells lysate 2000ug.