

À des fins de recherche uniquement

# Anticorps Polyclonal de lapin anti-CNPase



Numéro de catalogue: 13427-1-AP

10 Publications

## Informations de base

Numéro de catalogue:

13427-1-AP

Taille:

150ul, Concentration: 550 µg/ml by Nanodrop and 333 µg/ml by Bradford method using BSA as the standard;

Hôte:

Lapin

Isotype:

IgG

Immunogen Catalog Number:

AG4227

Numéro d'acquisition GenBank:

BC028040

Identification du gène (NCBI):

1267

Nom complet:

2',3'-cyclic nucleotide 3' phosphodiesterase

MW calculé

421 aa, 48 kDa

MW observés:

45-48 kDa

Méthode de purification:

Purification par affinité contre l'antigène

Dilutions recommandées:

WB 1:500-1:1000

IHC 1:20-1:200

IF 1:50-1:500

## Applications

Applications testées:

FC, IF, IHC, WB, ELISA

Demandes citées:

IF, IHC, WB

Spécificité de l'espèce:

Humain, rat, souris

Espèces citées:

Humain, rat, souris

**Remarque-IHC: il est suggéré de démasquer l'antigène avec un tampon de TE buffer pH 9,0; (\*) A défaut, 'le démasquage de l'antigène peut être effectué avec un tampon citrate pH 6,0.**

Contrôles positifs:

WB : cellules HepG2,

IHC : tissu cérébral de souris,

IF : tissu cérébral de souris,

## Informations générales

CNP(2',3'-cyclic-nucleotide 3'-phosphodiesterase) belongs to the cyclic nucleotide phosphodiesterase family. It plays an essential role in axonal survival but not in myelin assembly, coupling oligodendroglial functions in axonal support and myelination. This protein has 2 isoforms produced by alternative splicing with molecular mass of 45 and 48 kDa.

## Publications notables

Autrice	Pubmed ID	Journal	Application
Jiuyang Ding	34562559	Toxicol Lett	IHC
Li Zhang	32921051	Acta Physiol (Oxf)	WB
Ting Gao	36460235	Neurosci Lett	WB

## Stockage

Stockage:

Stocker à -20°C. Stable pendant un an après l'expédition.

Tampon de stockage:

PBS avec azoture de sodium à 0,02 % et glycérol à 50 % pH 7,3

L'aliquotage n'est pas nécessaire pour le stockage à -20C

\*\*\* Les 20ul contiennent 0,1% de BSA.

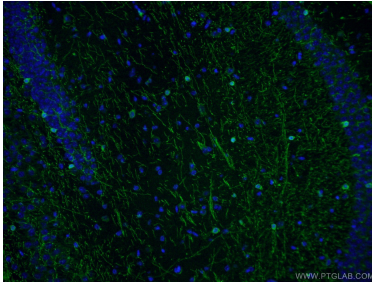
For technical support and original validation data for this product please contact:

T: 1 (888) 4PTGLAB (1-888-478-4522) (toll free in USA), or 1(312) 455-8498 (outside USA)

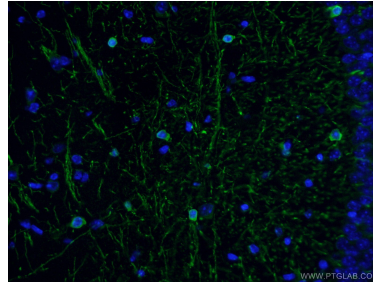
E: proteintech@ptglab.com  
W: ptglab.com

This product is exclusively available under Proteintech Group brand and is not available to purchase from any other manufacturer.

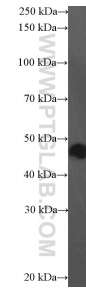
## Données de validation sélectionnées



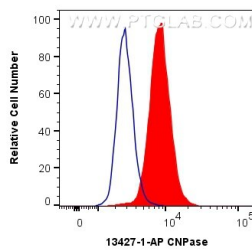
Immunofluorescent analysis of (4% PFA) fixed mouse brain tissue using 13427-1-AP (CNPase antibody) at dilution of 1:50 and Alexa Fluor 488-Conjugated AffiniPure Goat Anti-Rabbit IgG(H+L).



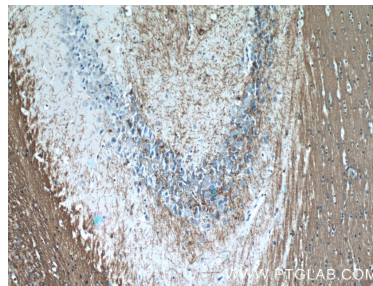
Immunofluorescent analysis of (4% PFA) fixed mouse brain tissue using 13427-1-AP (CNPase antibody) at dilution of 1:50 and Alexa Fluor 488-Conjugated AffiniPure Goat Anti-Rabbit IgG(H+L).



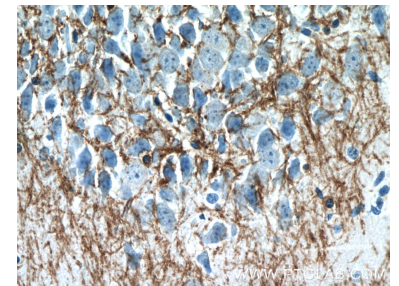
HepG2 cells were subjected to SDS PAGE followed by western blot with 13427-1-AP (CNPase antibody) at dilution of 1:600 incubated at room temperature for 1.5 hours.



$1 \times 10^6$  HepG2 cells were intracellularly stained with 0.4  $\mu$ g Anti-Human CNPase (13427-1-AP) and CoraLite@488-Conjugated AffiniPure Goat Anti-Rabbit IgG(H+L) at dilution 1:1000 (red), or 0.4  $\mu$ g Control Antibody. Cells were fixed with 4% PFA and permeabilized with Flow Cytometry Perm Buffer (PF00011-C).



Immunohistochemical analysis of paraffin-embedded mouse brain tissue slide using 13427-1-AP (CNPase antibody) at dilution of 1:50 (under 10x lens).



Immunohistochemical analysis of paraffin-embedded mouse brain tissue slide using 13427-1-AP (CNPase antibody) at dilution of 1:50 (under 40x lens).