

À des fins de recherche uniquement

# Anticorps Polyclonal de lapin anti-GCET2



Numéro de catalogue: 13447-1-AP

## Informations de base

<b>Numéro de catalogue:</b> 13447-1-AP	<b>Numéro d'acquisition GenBank:</b> BC030506	<b>Méthode de purification:</b> Purification par affinité contre l'antigène
<b>Taille:</b> 150ul , Concentration: 800 µg/ml by Nanodrop and 360 µg/ml by Bradford method using BSA as the standard;	<b>Identification du gène (NCBI):</b> 257144	<b>Dilutions recommandées:</b> WB 1:200-1:1000
<b>Hôte:</b> Lapin	<b>Nom complet:</b> germinal center expressed transcript 2	
<b>Isotype:</b> IgG	<b>MW calculé:</b> 178 aa, 21 kDa	
<b>Immunogen Catalog Number:</b> AG4280	<b>MW observés:</b> 25 kDa	

## Applications

<b>Applications testées:</b> WB, ELISA	<b>Contrôles positifs:</b> WB : cellules Raji,
<b>Spécificité de l'espèce:</b> Humain	

## Informations générales

GCET2, also named HGAL, is a newly gene that has been shown to be a useful marker for germinal centre (GC) B cells and GC B-cell derived malignancies, including follicular lymphomas and germinal centre B cell-like diffuse large B-cell lymphomas (GCB-DLBCLs), and is a useful prognosticator for DLBCLs. GCET2 may be an adaptor protein in GC B cells that transduces signals from GC B-cell membrane to the cytosol via its association with GRB2.

## Stockage

**Stockage:**  
Stocker à -20°C. Stable pendant un an après l'expédition.  
**Tampon de stockage:**  
PBS avec azoture de sodium à 0,02 % et glycérol à 50 % pH 7,3  
L'aliquotage n'est pas nécessaire pour le stockage à -20C

**\*\*\* Les 20ul contiennent 0,1% de BSA.**

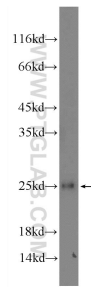
For technical support and original validation data for this product please contact:

T: 1 (888) 4PTGLAB (1-888-478-4522) (toll free in USA), or 1(312) 455-8498 (outside USA)

E: [proteintech@ptglab.com](mailto:proteintech@ptglab.com)  
W: [ptglab.com](http://ptglab.com)

**This product is exclusively available under Proteintech Group brand and is not available to purchase from any other manufacturer.**

## Données de validation sélectionnées



Raji cells were subjected to SDS PAGE followed by western blot with 13447-1-AP (GCET2 Antibody) at dilution of 1:300 incubated at room temperature for 1.5 hours.