

À des fins de recherche uniquement

Anticorps Polyclonal de lapin anti-CETP



Numéro de catalogue: 13459-1-AP

1 Publications

Informations de base

Numéro de catalogue: 13459-1-AP	Numéro d'acquisition GenBank: BC025739	Méthode de purification: Purification par affinité contre l'antigène
Taille: 150ul , Concentration: 500 µg/ml by Nanodrop;	Identification du gène (NCBI): 1071	Dilutions recommandées: WB 1:500-1:1000 IF 1:50-1:500
Hôte: Lapin	Nom complet: cholesteryl ester transfer protein, plasma	
Isotype: IgG	MW calculé 493 aa, 55 kDa	
Immunogen Catalog Number: AG3923	MW observés: 50-70, 100 kDa	

Applications

Applications testées: IF, WB, ELISA	Contrôles positifs: WB : tissu cérébral humain, IF : cellules HepG2,
Demandes citées: IF, WB	
Spécificité de l'espèce: Humain	
Espèces citées: Humain	

Informations générales

Cholesteryl ester transfer protein (CETP) is a plasma glycoprotein which transfers cholesteryl esters, triglycerides, and phospholipids between lipoproteins. In plasma, CETP is mainly associated with HDL particles and catalyzes the transfer of cholesteryl esters from HDL to apolipoprotein (apo) B-containing plasma lipoproteins. Low plasma concentrations of high-density lipoprotein-cholesterol (HDL-C) have long been recognized as a major, independent cardiovascular disease (CVD) risk factor. It demonstrated that altered level of plasma CETP was associated with the increased risk of CVD (PMID: 17991755, PMID: 23477743). CETP can be detected a 70 kDa isoform by glycosylation (PMID: 3281933, PMID: 22056562). It also can be detected 100 kDa dimer (PMID: 7744792).

Publications notables

Autrice	Pubmed ID	Journal	Application
Mengyang Liu	25914138	J Biol Chem	WB, IF

Stockage

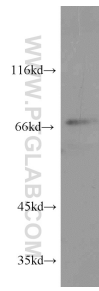
Stockage:
Stocker à -20°C. Stable pendant un an après l'expédition.
Tampon de stockage:
PBS avec azoture de sodium à 0,02 % et glycérol à 50 % pH 7,3
L'aliquotage n'est pas nécessaire pour le stockage à -20C

*** Les 20ul contiennent 0,1% de BSA.

For technical support and original validation data for this product please contact:
T: 1 (888) 4PTGLAB (1-888-478-4522) (toll free in USA), or 1(312) 455-8498 (outside USA)
E: proteintech@ptglab.com
W: ptglab.com

This product is exclusively available under Proteintech Group brand and is not available to purchase from any other manufacturer.

Données de validation sélectionnées



Immunofluorescent analysis of (-20°C Ethanol) fixed HepG2 cells using CETP antibody (13459-1-AP) at dilution of 1:200 and CoraLite®488-Conjugated AffiniPure Goat Anti-Rabbit IgG(H+L), CL594-phalloidin (red).

human brain tissue were subjected to SDS PAGE followed by western blot with 13459-1-AP (CETP antibody) at dilution of 1:600 incubated at room temperature for 1.5 hours.