

À des fins de recherche uniquement

# Anticorps Polyclonal de lapin anti-IL-22RA1



Numéro de catalogue: 13462-1-AP

10 Publications

## Informations de base

Numéro de catalogue: 13462-1-AP	Numéro d'acquisition GenBank: BC029273	Méthode de purification: Purification par affinité contre l'antigène
Taille: 150ul, Concentration: 700 µg/ml by Nanodrop;	Identification du gène (NCBI): 58985	Dilutions recommandées: WB 1:1000-1:4000 IF 1:50-1:500
Hôte: Lapin	Nom complet: interleukin 22 receptor, alpha 1	
Isotype: IgG	MW calculé: 574 aa, 63 kDa	
Immunogen Catalog Number: AG4056	MW observés: 63-68 kDa	

## Applications

### Applications testées:

FC, IF, WB, ELISA

### Demandes citées:

FC, IF, IHC, WB

### Spécificité de l'espèce:

Humain, rat, souris

### Espèces citées:

Humain, porc, rat, souris

### Contrôles positifs:

WB : cellules COLO 320, cellules HEK-293, cellules HepG2, tissu d'intestin grêle de souris

IF : intestin humain,

## Informations générales

Interleukin-22 (IL-22), a member of the IL-10 family of cytokines, is important for the modulation of tissue responses during inflammation. IL-22 receptor is a heterodimer of the IL-10RB and IL-22RA1. IL-22RA1 belongs to the class II cytokine receptor family. It is expressed in a limited number of tissues including skin, colon, liver, lung, pancreas and kidney. The expression is lack in immune cells such as monocytes, T cells, and NK cells (PMID: 15308104). IL-22RA1 can also form a receptor for IL-20 and IL-24 with IL20RB (PMID: 23793061).

## Publications notables

Autrice	Pubmed ID	Journal	Application
Zixuan Gao	36103628	Am J Physiol Endocrinol Metab	WB,IF
Yufei Wang	36201050	Cell Tissue Res	IF
Shidi Wu	31790685	Life Sci	WB

## Stockage

### Stockage:

Stocker à -20°C. Stable pendant un an après l'expédition.

### Tampon de stockage:

PBS avec azoture de sodium à 0,02 % et glycérol à 50 % pH 7,3

L'aliquotage n'est pas nécessaire pour le stockage à -20C

\*\*\* Les 20ul contiennent 0,1% de BSA.

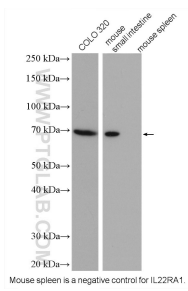
For technical support and original validation data for this product please contact:

T: 1 (888) 4PTGLAB (1-888-478-4522) (toll free in USA), or 1(312) 455-8498 (outside USA)

E: proteintech@ptglab.com  
W: ptglab.com

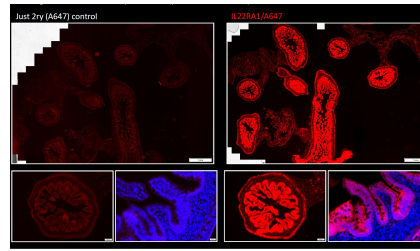
This product is exclusively available under Proteintech Group brand and is not available to purchase from any other manufacturer.

## Données de validation sélectionnées

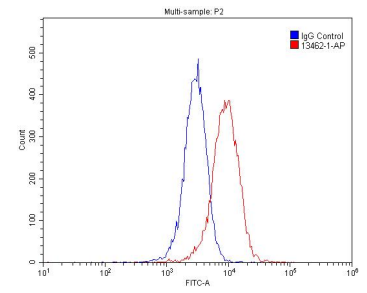


Mouse spleen is a negative control for IL22RA1.

Various lysates were subjected to SDS PAGE followed by western blot with 13462-1-AP (IL22RA1 antibody) at dilution of 1:2000 incubated at room temperature for 1.5 hours.



Staining of IL22RA1 (Cat#13462-1-AP) (2ryAbisA647) on FFPE human gut. The nuclei were counter stained with DAPI (in blue). The IL22RA1 signal is localized in the epithelial compartment which is expected. (Data from Manuel Florez, Laboratory Dre. Naglaa Shoukry, CRCHUM).



1X10<sup>6</sup> HepG2 cells were stained with .2ug IL22RA1 antibody (13462-1-AP, red) and control antibody (blue). Fixed with 4% PFA blocked with 3% BSA (30 min). Alexa Fluor 488-conjugated AffiniPure Goat Anti-Rabbit IgG(H+L) with dilution 1:1500.