

À des fins de recherche uniquement

# Anticorps Polyclonal de lapin anti-PPP2CA



Numéro de catalogue: 13482-1-AP

Phare

26 Publications

## Informations de base

Numéro de catalogue:

13482-1-AP

Taille:

150ul, Concentration: 350 µg/ml by Nanodrop and 213 µg/ml by Bradford method using BSA as the standard;

Hôte:

Lapin

Isotype:

IgG

Immunogen Catalog Number:

AG4294

Numéro d'acquisition GenBank:

BC031696

Identification du gène (NCBI):

5515

Nom complet:

protein phosphatase 2 (formerly 2A), catalytic subunit, alpha isoform

MW calculé

309 aa, 36 kDa

MW observés:

36 kDa

Méthode de purification:

Purification par affinité contre l'antigène

Dilutions recommandées:

WB 1:500-1:1000

IP 0.5-4.0 ug for IP and 1:500-1:1000 for WB

IHC 1:50-1:500

IF 1:50-1:500

## Applications

Applications testées:

FC, IF, IHC, IP, WB, ELISA

Demandes citées:

CoIP, IF, IHC, IP, WB

Spécificité de l'espèce:

Humain, rat, souris

Espèces citées:

Humain, souris

**Remarque-IHC: il est suggéré de démasquer l'antigène avec un tampon de TE buffer pH 9,0; (\*) A défaut, 'le démasquage de l'antigène peut être 'effectué avec un tampon citrate pH 6,0.**

Contrôles positifs:

WB : cellules Jurkat, cellules HEK-293T, cellules MCF-7, tissu hépatique humain

IP : cellules Jurkat,

IHC : tissu hépatique humain,

IF : cellules MCF-7,

## Informations générales

PPP2CA, also named as RP-C and PP2A-alpha, belongs to the PPP phosphatase family and PP-1 subfamily. PP2A can modulate the activity of phosphorylase B kinase casein kinase 2, mitogen-stimulated S6 kinase, and MAP-2 kinase. PP2A activity was modestly decreased in AML patients harboring C-KIT/WT. PP2A is a target for C-KIT/TKD and implicated the potential efficacy of therapies targeting PP2A in such AML in future.

## Publications notables

Autrice	Pubmed ID	Journal	Application
Jian Guo	32989094	J Immunol	WB
Xiang Xu	34561619	Cell Res	WB,IP
Hai Zheng	33243860	Science	WB

## Stockage

Stockage:

Stocker à -20°C. Stable pendant un an après l'expédition.

Tampon de stockage:

PBS avec azoture de sodium à 0,02 % et glycérol à 50 % pH 7,3

L'aliquotage n'est pas nécessaire pour le stockage à -20C

**\*\*\* Les 20ul contiennent 0,1% de BSA.**

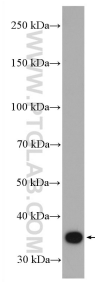
For technical support and original validation data for this product please contact:

T: 1 (888) 4PTGLAB (1-888-478-4522) (toll free in USA), or 1(312) 455-8498 (outside USA)

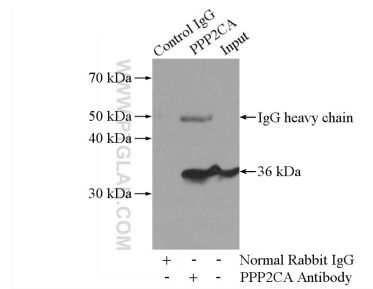
E: proteintech@ptglab.com  
W: ptglab.com

This product is exclusively available under Proteintech Group brand and is not available to purchase from any other manufacturer.

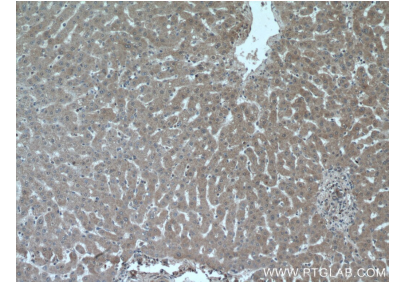
## Données de validation sélectionnées



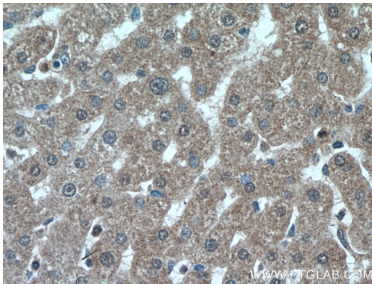
Jurkat cells were subjected to SDS PAGE followed by western blot with 13482-1-AP (PPP2CA antibody) at dilution of 1:600 incubated at room temperature for 1.5 hours.



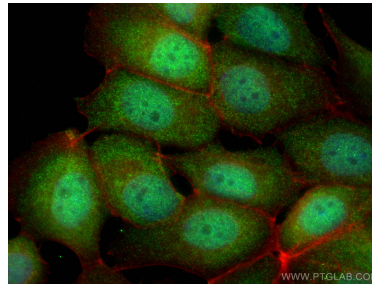
IP Result of anti-PPP2CA (IP:13482-1-AP, 4 $\mu$ g; Detection:13482-1-AP 1:500) with Jurkat cells lysate 2400 $\mu$ g.



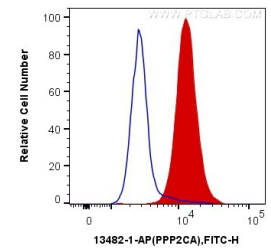
Immunohistochemical analysis of paraffin-embedded human liver tissue slide using 13482-1-AP (PPP2CA antibody) at dilution of 1:200 (under 10x lens).



Immunohistochemical analysis of paraffin-embedded human liver tissue slide using 13482-1-AP (PPP2CA antibody) at dilution of 1:200 (under 40x lens).



Immunofluorescent analysis of (4% PFA) fixed MCF-7 cells using PPP2CA antibody (13482-1-AP) at dilution of 1:200 and Coralite@488-Conjugated AffiniPure Goat Anti-Rabbit IgG(H+L), CL594-phalloidin (red).



1X10<sup>6</sup> MCF-7 cells were intracellularly stained with 0.2  $\mu$ g Anti-Human PPP2CA (13482-1-AP) and Coralite@488-Conjugated AffiniPure Goat Anti-Rabbit IgG(H+L) at dilution 1:1000 (red), or 0.2  $\mu$ g Control Antibody. Cells were fixed and permeabilized with Transcription Factor Staining Buffer Kit (PF00011).