

À des fins de recherche uniquement

Anticorps Polyclonal de lapin anti-SNX16



Numéro de catalogue: 13492-1-AP

Informations de base

Numéro de catalogue: 13492-1-AP	Numéro d'acquisition GenBank: BC033630	Méthode de purification: Purification par affinité contre l'antigène
Taille: 150ul , Concentration: 400 µg/ml by Nanodrop;	Identification du gène (NCBI): 64089	Dilutions recommandées: WB 1:500-1:1000 IF 1:200-1:800
Hôte: Lapin	Nom complet: sorting nexin 16	
Isotype: IgG	MW calculé: 344 aa, 39 kDa	
Immunogen Catalog Number: AG4315	MW observés: 39-50 kDa	

Applications

Applications testées: IF, WB, ELISA	Contrôles positifs: WB : cellules Jurkat, cellules Raji, cellules U-251 IF : cellules HT-29,
Spécificité de l'espèce: Humain	

Informations générales

SNX16, Sorting nexin 16, is a member of the sorting nexin family. Members of this family contain a phox (PX) domain, which mediates membrane association by interaction with phosphoinositides. SNX16 associates with late endosome membranes as is involved in tubule formation, cholesterol transport, and transport of tetraspanin CD81. It also inhibits cell migration and tumorigenesis. SNX16 directs the sorting of EGFR to the endosomal compartment and thus regulates EGF-induced cell signaling (PMID:15292396). It may function in the trafficking of proteins between the early and late endosomal compartments. SNX16 was detected 49-53 kDa in human (PMID:12813048).

Stockage

Stockage:
Stocker à -20°C. Stable pendant un an après l'expédition.
Tampon de stockage:
PBS avec azoture de sodium à 0,02 % et glycérol à 50 % pH 7,3
L'aliquotage n'est pas nécessaire pour le stockage à -20C

*** Les 20ul contiennent 0,1% de BSA.

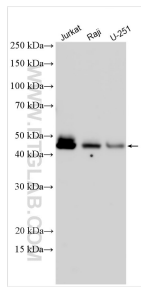
For technical support and original validation data for this product please contact:

T: 1 (888) 4PTGLAB (1-888-478-4522) (toll free in USA), or 1(312) 455-8498 (outside USA)

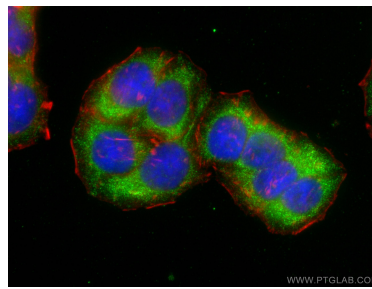
E: proteintech@ptglab.com
W: ptglab.com

This product is exclusively available under Proteintech Group brand and is not available to purchase from any other manufacturer.

Données de validation sélectionnées



Various lysates were subjected to SDS PAGE followed by western blot with 13492-1-AP (SNX16 antibody) at dilution of 1:500 incubated at room temperature for 1.5 hours.



Immunofluorescent analysis of (-20°C Ethanol) fixed HT-29 cells using SNX16 antibody (13492-1-AP) at dilution of 1:400 and CoraLite® 488-Conjugated AffiniPure Goat Anti-Rabbit IgG(H+L), CL594-Phalloidin (red).