

À des fins de recherche uniquement

Anticorps Polyclonal de lapin anti-OTX2



Numéro de catalogue: 13497-1-AP

Phare

22 Publications

Informations de base

Numéro de catalogue:

13497-1-AP

Taille:

150ul, Concentration: 620 µg/ml by Nanodrop and 613 µg/ml by Bradford method using BSA as the standard;

Hôte:

Lapin

Isotype:

IgG

Immunogen Catalog Number:

AG4323

Numéro d'acquisition GenBank:

BC032579

Identification du gène (NCBI):

5015

Nom complet:

orthodenticle homeobox 2

MW calculé

297 aa, 32 kDa

MW observés:

31-35 kDa

Méthode de purification:

Purification par affinité contre l'antigène

Dilutions recommandées:

WB 1:2000-1:16000

IP 0.5-4.0 ug for IP and 1:500-1:3000 for WB

IHC 1:20-1:200

IF 1:50-1:500

Applications

Applications testées:

FC, IF, IHC, IP, WB, ELISA

Demandes citées:

ChIP, IF, IHC, WB

Spécificité de l'espèce:

Humain, rat, souris

Espèces citées:

Humain, poulet, souris

Remarque-IHC: il est suggéré de démasquer l'antigène avec un tampon de TE buffer pH 9.0; (*) A défaut, 'le démasquage de l'antigène peut être 'effectué avec un tampon citrate pH 6,0.

Contrôles positifs:

WB : cellules Y79, tissu rétinien de rat, tissu rétinien de souris

IP : cellules Y79,

IHC : tissu de gliome humain,

IF : tissu embryonnaire de souris,

Informations générales

The orthodenticle homeobox 2, encoded by OTX2 gene, is a key transcription factor in developmental processes. In particular, it is required for the early specification of the brain and the embryonic development of sensory organs, including the, pineal gland, pituitary gland, inner part of the ear, eyes, and optic nerve. In later stages, it is important for maintaining intact retina and brain function. In addition, it acts as a transcriptional repressor and a gatekeeper of myogenic and neuronal differentiation in medulloblastoma cells. OTX2 binds to the MyoD1 core enhancer through its homeobox domain and the remarkable repressor activity exhibited by the homeobox domain renders OTX2 transcriptionally repressive

Publications notables

Autrice	Pubmed ID	Journal	Application
Kyle S. Smith	36131015	Nature	WB
Meng Li	36273157	J Exp Clin Cancer Res	WB, ChIP
Yue Li	29031852	Neuropharmacology	IHC

Stockage

Stockage:

Stocker à -20°C. Stable pendant un an après l'expédition.

Tampon de stockage:

PBS avec azoture de sodium à 0,02 % et glycérol à 50 % pH 7,3

L'aliquoteage n'est pas nécessaire pour le stockage à -20C

*** Les 20ul contiennent 0,1% de BSA.

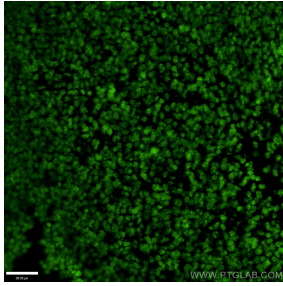
For technical support and original validation data for this product please contact:

T: 1 (888) 4PTGLAB (1-888-478-4522) (toll free in USA), or 1(312) 455-8498 (outside USA)

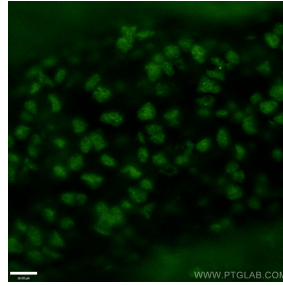
E: proteintech@ptglab.com
W: ptglab.com

This product is exclusively available under Proteintech Group brand and is not available to purchase from any other manufacturer.

Données de validation sélectionnées



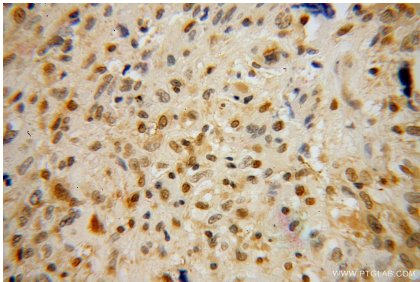
Immunofluorescent analysis of (4% PFA) fixed mouse embryo tissue using 13497-1-AP (OTX2 antibody) at dilution of 1:50 and Alexa Fluor 488-conjugated AffiniPure Goat Anti-Rabbit IgG(H+L).



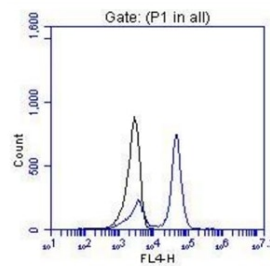
Immunofluorescent analysis of (4% PFA) fixed mouse embryo tissue using 13497-1-AP (OTX2 antibody) at dilution of 1:50 and Alexa Fluor 488-conjugated AffiniPure Goat Anti-Rabbit IgG(H+L).



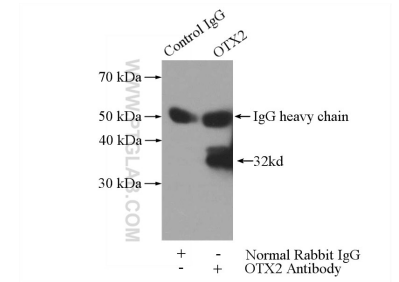
Various lysates were subjected to SDS PAGE followed by western blot with 13497-1-AP (OTX2 antibody) at dilution of 1:8000 incubated at room temperature for 1.5 hours.



Immunohistochemical analysis of paraffin-embedded human gliomas using 13497-1-AP (OTX2 antibody) at dilution of 1:100 (under 40x lens).



FC result of anti-OTX2 (13497-1-AP, 1:100) with hESC which spontaneous differentiation toward retinal lineage (RPE). (Black: control; Blue OTX2).



IP Result of anti-OTX2 (IP:13497-1-AP, 3ug; Detection:13497-1-AP 1:1500) with Y79 cells lysate 2400ug.