

À des fins de recherche uniquement

Anticorps Polyclonal de lapin anti-GPX7



Numéro de catalogue: 13501-1-AP

Phare

13 Publications

Informations de base

Numéro de catalogue:

13501-1-AP

Taille:

150ul, Concentration: 573 µg/ml by Nanodrop and 313 µg/ml by Bradford method using BSA as the standard;

Hôte:

Lapin

Isotype:

IgG

Immunogen Catalog Number:

AG4328

Numéro d'acquisition GenBank:

BC032788

Identification du gène (NCBI):

2882

Nom complet:

glutathione peroxidase 7

MW calculé

187 aa, 21 kDa

MW observés:

18-21 kDa

Méthode de purification:

Purification par affinité contre l'antigène

Dilutions recommandées:

WB 1:500-1:2000

IHC 1:50-1:500

Applications

Applications testées:

IHC, WB, ELISA

Demandes citées:

IF, IHC, WB

Spécificité de l'espèce:

Humain

Espèces citées:

Humain, poulet, souris

Remarque-IHC: il est suggéré de démasquer l'antigène avec un tampon de TE buffer pH 9,0; (*) A défaut, le démasquage de l'antigène peut être effectué avec un tampon citrate pH 6,0.

Contrôles positifs:

WB : tissu hépatique humain, cellules HEK-293 transfectées, tissu cérébral humain, tissu placentaire humain

IHC : tissu de cancer du foie humain, tissu cérébral humain

Informations générales

GPX7 (Glutathione peroxidase 7) is also named as GPX6, CL683, GSHPx-7 and belongs to the glutathione peroxidase family. It shares approximately 45% amino acid sequence with other GPX family members. Because GPX7 expression protected cells from acidic bile acid-induced DNA damage, it may protect oesophageal epithelial cells from acidic bile acid-induced apoptosis (PMID:22157330). This antibody can be detected as 18-21kDa due to signal peptide splicing.

Publications notables

Autrice	Pubmed ID	Journal	Application
Xuchen Hu	34626080	J Cell Mol Med	WB, IHC
Dazhi Tang	30289502	Poult Sci	IHC
Qingcai Meng	29980787	Oncogene	IHC

Stockage

Stockage:

Stocker à -20°C. Stable pendant un an après l'expédition.

Tampon de stockage:

PBS avec azote de sodium à 0,02 % et glycérol à 50 % pH 7,3

L'aliquotage n'est pas nécessaire pour le stockage à -20°C

*** Les 20ul contiennent 0,1% de BSA.

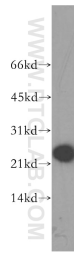
For technical support and original validation data for this product please contact:

T: 1 (888) 4PTGLAB (1-888-478-4522) (toll free in USA), or 1(312) 455-8498 (outside USA)

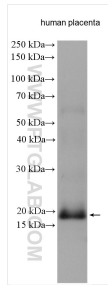
E: proteintech@ptglab.com
W: ptglab.com

This product is exclusively available under Proteintech Group brand and is not available to purchase from any other manufacturer.

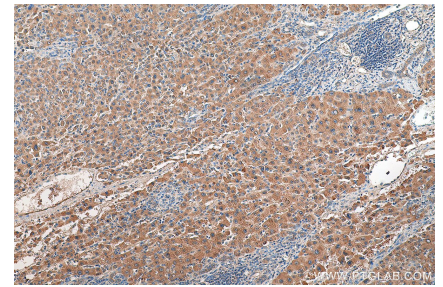
Données de validation sélectionnées



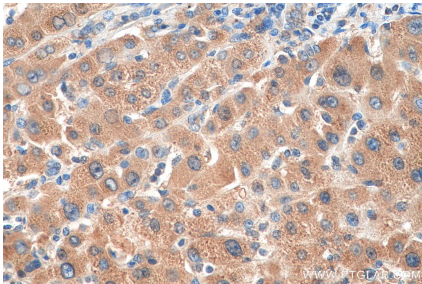
human liver tissue were subjected to SDS PAGE followed by western blot with 13501-1-AP (GPX7 antibody) at dilution of 1:1000 incubated at room temperature for 1.5 hours.



human placenta tissue were subjected to SDS PAGE followed by western blot with 13501-1-AP (GPX7 antibody) at dilution of 1:1000 incubated at room temperature for 1.5 hours.



Immunohistochemical analysis of paraffin-embedded human liver cancer tissue slide using 13501-1-AP (GPX7 antibody) at dilution of 1:200 (under 10x lens). Heat mediated antigen retrieval with Tris-EDTA buffer (pH 9.0).



Immunohistochemical analysis of paraffin-embedded human liver cancer tissue slide using 13501-1-AP (GPX7 antibody) at dilution of 1:200 (under 40x lens). Heat mediated antigen retrieval with Tris-EDTA buffer (pH 9.0).