

À des fins de recherche uniquement

# Anticorps Polyclonal de lapin anti-MARVELD2



Numéro de catalogue: 13515-1-AP

5 Publications

## Informations de base

Numéro de catalogue:  
13515-1-AP

Taille:  
150ul, Concentration: 1000 µg/ml by  
Nanodrop and 647 µg/ml by Bradford  
method using BSA as the standard;

Hôte:  
Lapin

Isotype:  
IgG

Immunogen Catalog Number:  
AG4446

Numéro d'acquisition GenBank:  
BC033689

Identification du gène (NCBI):  
153562

Nom complet:  
MARVEL domain containing 2

MW calculé  
558 aa, 64 kDa

MW observés:  
64 kDa

Méthode de purification:  
Purification par affinité contre  
l'antigène

Dilutions recommandées:  
WB 1:5000-1:50000

## Applications

Applications testées:  
WB, ELISA

Demandes citées:  
IF, IHC, WB

Spécificité de l'espèce:  
Humain, rat, souris

Espèces citées:  
Humain, porc, souris

Contrôles positifs:

WB : cellules HEK-293, cellules HeLa, tissu rénal de rat,  
tissu rénal de souris

## Informations générales

MARVELD2, also named as Tricellulin or TRIC, is a 558 amino acid protein, which contains one MARVEL domain. MARVELD2 localizes the cell membrane and plays a role in the formation of the epithelial barriers. MARVELD2, is a first integral membrane protein that is concentrated at the vertically oriented tight junction strands of tricellular contacts. MARVELD2 may be a component to maintain the integrity for peripheral nervous system myelin function and morphology.

## Publications notables

Autrice	Pubmed ID	Journal	Application
David F. Russell	36395118	PLoS One	IF
David F Russell	35987072	Tissue Cell	IF
Zhe-Wei Zhang	35150869	Microb Pathog	WB,IHC

## Stockage

Stockage:

Stocker à -20°C. Stable pendant un an après l'expédition.

Tampon de stockage:

PBS avec azoture de sodium à 0,02 % et glycérol à 50 % pH 7,3

L'aliquotage n'est pas nécessaire pour le stockage à -20C

\*\*\* Les 20ul contiennent 0,1% de BSA.

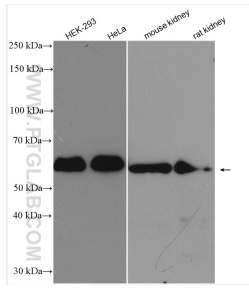
For technical support and original validation data for this product please contact:

T: 1 (888) 4PTGLAB (1-888-478-4522) (toll free  
in USA), or 1(312) 455-8498 (outside USA)

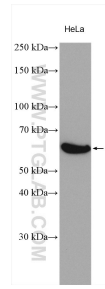
E: [proteintech@ptglab.com](mailto:proteintech@ptglab.com)  
W: [ptglab.com](http://ptglab.com)

This product is exclusively available under Proteintech Group brand and is not available to purchase from any other manufacturer.

## Données de validation sélectionnées



Various lysates were subjected to SDS PAGE followed by western blot with 13515-1-AP (MARVELD2 antibody) at dilution of 1:10000 incubated at room temperature for 1.5 hours.



HeLa cell lysates were subjected to SDS PAGE followed by western blot with 13515-1-AP (MARVELD2 antibody) at dilution of 1:1000 incubated at room temperature for 1.5 hours.