

À des fins de recherche uniquement

Anticorps Polyclonal de lapin anti-Choline Kinase Alpha



Numéro de catalogue: 13520-1-AP

Phare

20 Publications

Informations de base

Numéro de catalogue:

13520-1-AP

Taille:

150ul, Concentration: 500 µg/ml by Nanodrop and 300 µg/ml by Bradford method using BSA as the standard;

Hôte:

Lapin

Isotype:

IgG

Immunogen Catalog Number:

AG4761

Numéro d'acquisition GenBank:

BC036471

Identification du gène (NCBI):

1119

Nom complet:

choline kinase alpha

MW calculé

439 aa, 52 kDa

MW observés:

50 kDa

Méthode de purification:

Purification par affinité contre l'antigène

Dilutions recommandées:

WB 1:500-1:1000

IP 0.5-4.0 ug for IP and 1:500-1:1000 for WB

IHC 1:50-1:500

IF 1:50-1:500

Applications

Applications testées:

IF, IHC, IP, WB, ELISA

Demandes citées:

ELISA, IF, IHC, WB

Spécificité de l'espèce:

Humain, rat, souris

Espèces citées:

Humain, rat, souris

Remarque-IHC: il est suggéré de démasquer l'antigène avec un tampon de TE buffer pH 9,0; (*) A défaut, 'le démasquage de l'antigène peut être effectué avec un tampon citrate pH 6,0.

Contrôles positifs:

WB : tissu splénique de souris, cellules COLO 320, tissu de côlon de souris, tissu splénique de rat

IP : tissu splénique de souris,

IHC : tissu de cancer du foie humain,

IF : cellules HeLa,

Informations générales

CHKA (Choline kinase alpha) is also named as CHK, CKI, EK (Ethanolamine kinase) and belongs to the choline/ethanolamine kinase family. Choline kinase (ATP:choline phosphotransferase) is a cytosolic enzyme that catalyzes the committed step in the synthesis of PC by the CDP-choline pathway. The enzyme catalyzes the phosphorylation of choline with ATP to form phosphocholine and ADP (PMID:9506987). It has 2 isoforms produced by alternative splicing with the molecular weight of 52 kDa and 50 kDa.

Publications notables

Autrice	Pubmed ID	Journal	Application
Farhad Vesuna	36136285	Mol Cell Biochem	WB
Yantuanjin Ma	36372042	Placenta	IHC
Noriko Mori	26503172	NMR Biomed	WB

Stockage

Stockage:

Stocker à -20°C. Stable pendant un an après l'expédition.

Tampon de stockage:

PBS avec azoture de sodium à 0,02 % et glycérol à 50 % pH 7,3

L'aliquotage n'est pas nécessaire pour le stockage à -20C

*** Les 20ul contiennent 0,1% de BSA.

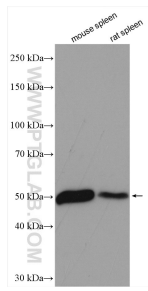
For technical support and original validation data for this product please contact:

T: 1 (888) 4PTGLAB (1-888-478-4522) (toll free in USA), or 1(312) 455-8498 (outside USA)

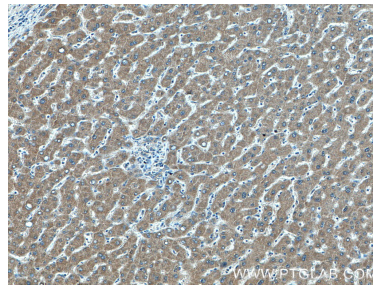
E: proteintech@ptglab.com
W: ptglab.com

This product is exclusively available under Proteintech Group brand and is not available to purchase from any other manufacturer.

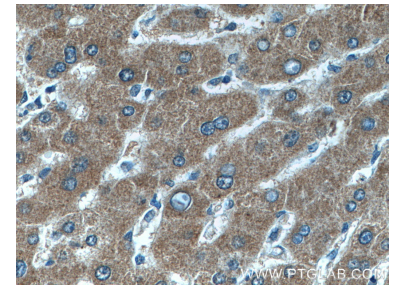
Données de validation sélectionnées



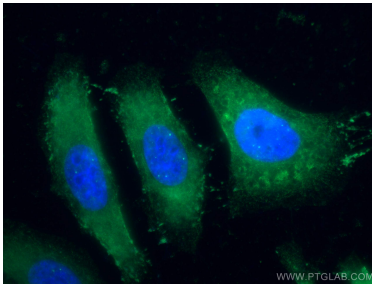
Various lysates were subjected to SDS PAGE followed by western blot with 13520-1-AP (Choline kinase alpha antibody) at dilution of 1:500 incubated at room temperature for 1.5 hours.



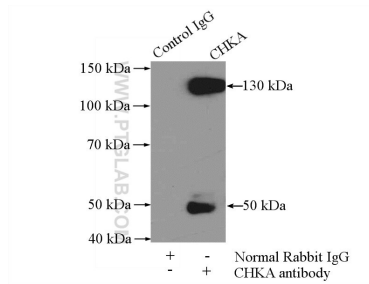
Immunohistochemical analysis of paraffin-embedded human liver cancer tissue slide using 13520-1-AP (Choline kinase alpha antibody) at dilution of 1:200 (under 10x lens).



Immunohistochemical analysis of paraffin-embedded human liver cancer tissue slide using 13520-1-AP (Choline kinase alpha antibody) at dilution of 1:200 (under 40x lens).



Immunofluorescent analysis of (4% PFA) fixed HeLa cells using 13520-1-AP (Choline kinase alpha antibody), at dilution of 1:100 and CoraLite@488-Conjugated AffiniPure Goat Anti-Rabbit IgG(H+L).



IP Result of anti-Choline kinase alpha (IP:13520-1-AP, 4ug; Detection:13520-1-AP 1:500) with mouse spleen tissue lysate 4000ug.