

À des fins de recherche uniquement

Anticorps Polyclonal de lapin anti- ACTL7B



Numéro de catalogue: 13537-1-AP

1 Publications

Informations de base

| | | |
|---|---|--|
| Numéro de catalogue: 13537-1-AP | Numéro d'acquisition GenBank: BC033789 | Méthode de purification: Purification par affinité contre l'antigène |
| Taille: 150ul , Concentration: 300 µg/ml by Nanodrop; | Identification du gène (NCBI): 10880 | Dilutions recommandées: WB 1:500-1:3000 IHC 1:20-1:200 |
| Hôte: Lapin | Nom complet: actin-like 7B | |
| Isotype: IgG | MW calculé 415 aa, 45 kDa | |
| Immunogen Catalog Number: AG4460 | MW observés: 45 kDa | |

Applications

Applications testées:
IHC, WB, ELISA

Spécificité de l'espèce:
Humain, rat, souris

Remarque-IHC: il est suggéré de démasquer l'antigène avec un tampon de TE buffer pH 9,0; (*) À défaut, 'le démasquage de l'antigène peut être effectué avec un tampon citrate pH 6,0.

Contrôles positifs:

WB : tissu testiculaire humain, tissu hépatique humain, tissu testiculaire de souris

IHC : tissu de cancer de la prostate humain,

Informations générales

ACTL7B is also named as actin-like-7-beta. The protein encoded by this gene is a member of a family of actin-related proteins (ARPs) which share significant amino acid sequence identity to conventional actins. The ARPs are involved in diverse cellular processes, including vesicular transport, spindle orientation, nuclear migration and chromatin remodeling. The ACTL7B gene is expressed predominantly in the testis, however, its exact function is not known. Diseases associated with ACTL7B include Dysautonomia and Hypertensive Nephropathy. An important paralog of this gene is ACTL7A. ACTL7B can be detected as 45 kDa.

Publications notables

| Autrice | Pubmed ID | Journal | Application |
|-----------------|-----------|----------|-------------|
| Brian P Hermann | 30404016 | Cell Rep | |

Stockage

Stockage:

Stocker à -20°C. Stable pendant un an après l'expédition.

Tampon de stockage:

PBS avec azoture de sodium à 0,02 % et glycérol à 50 % pH 7,3

L'aliquotage n'est pas nécessaire pour le stockage à -20C

*** Les 20ul contiennent 0,1% de BSA.

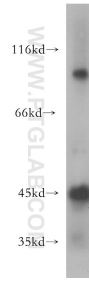
For technical support and original validation data for this product please contact:

T: 1 (888) 4PTGLAB (1-888-478-4522) (toll free
in USA), or 1(312) 455-8498 (outside USA)

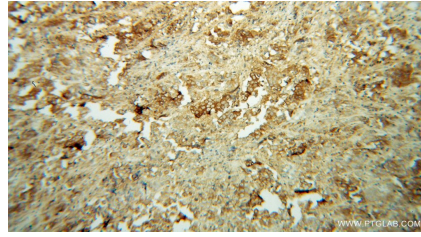
E: proteintech@ptglab.com
W: ptglab.com

This product is exclusively available under Proteintech Group brand and is not available to purchase from any other manufacturer.

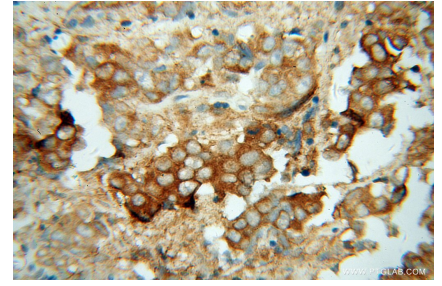
Données de validation sélectionnées



human testis tissue were subjected to SDS PAGE followed by western blot with 13537-1-AP (ACTL7B antibody) at dilution of 1:300 incubated at room temperature for 1.5 hours.



Immunohistochemical analysis of paraffin-embedded human prostate cancer using 13537-1-AP (ACTL7B antibody) at dilution of 1:100 (under 10x lens).



Immunohistochemical analysis of paraffin-embedded human prostate cancer using 13537-1-AP (ACTL7B antibody) at dilution of 1:100 (under 40x lens).