

À des fins de recherche uniquement

# Anticorps Polyclonal de lapin anti-PAK6



Numéro de catalogue: 13539-1-AP

Phare

3 Publications

## Informations de base

Numéro de catalogue:  
13539-1-AP

Taille:  
150ul, Concentration: 450 µg/ml by Nanodrop and 333 µg/ml by Bradford method using BSA as the standard;

Hôte:  
Lapin

Isotype:  
IgG

Immunogen Catalog Number:  
AG4467

Numéro d'acquisition GenBank:  
BC035596

Identification du gène (NCBI):  
56924

Nom complet:  
p21 protein (Cdc42/Rac)-activated kinase 6

MW calculé:  
681 aa, 75 kDa

MW observés:  
70-75 kDa

Méthode de purification:  
Purification par affinité contre l'antigène

Dilutions recommandées:  
WB 1:500-1:2000  
IP 0.5-4.0 ug for IP and 1:200-1:1000 for WB  
IHC 1:50-1:500  
IF 1:20-1:200

## Applications

Applications testées:  
IF, IHC, IP, WB, ELISA

Demandes citées:  
IHC, WB

Spécificité de l'espèce:  
Humain, rat, souris

Espèces citées:  
Humain, rat

**Remarque-IHC: il est suggéré de démasquer l'antigène avec un tampon de TE buffer pH 9,0; (\*) A défaut, 'le démasquage de l'antigène peut être effectué avec un tampon citrate pH 6,0.**

Contrôles positifs:

WB : tissu testiculaire de souris, cellules Raji, tissu testiculaire de rat

IP : tissu testiculaire de souris,

IHC : tissu de cancer de la prostate humain,

IF : cellules HEK-293,

## Informations générales

PAK6(p21-activated kinase 6) is a serine/threonine kinase belonging to the p21-activated kinase (PAK) family. This protein plays a role in the regulation of gene transcription and may protect cells from apoptosis through phosphorylation of BAD. Northern blot analysis revealed that PAK6 is highly expressed in testis and prostate tissues (PMID:11278661). The immunogen of this antibody is the C-terminal of PAK6. This antibody has weak cross-reaction with other PAK members.

## Publications notables

Autrice	Pubmed ID	Journal	Application
Yuanyuan Wu	32009812	J Pain Res	WB
Chunhui Liu	26459798	Mol Med Rep	WB, IHC
Qin Yang	32782556	Oncol Lett	WB, IHC

## Stockage

Stockage:

Stocker à -20°C. Stable pendant un an après l'expédition.

Tampon de stockage:

PBS avec azoture de sodium à 0,02 % et glycérol à 50 % pH 7,3

L'aliquotage n'est pas nécessaire pour le stockage à -20C

\*\*\* Les 20ul contiennent 0,1% de BSA.

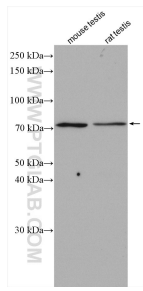
For technical support and original validation data for this product please contact:

T: 1 (888) 4PTGLAB (1-888-478-4522) (toll free in USA), or 1(312) 455-8498 (outside USA)

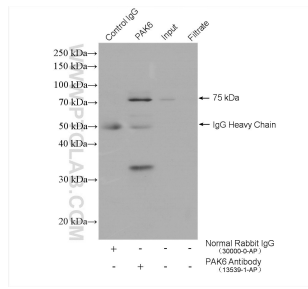
E: proteintech@ptglab.com  
W: ptglab.com

This product is exclusively available under Proteintech Group brand and is not available to purchase from any other manufacturer.

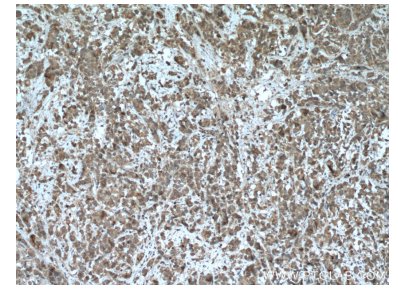
## Données de validation sélectionnées



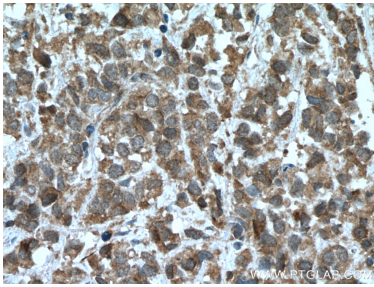
Various lysates were subjected to SDS PAGE followed by western blot with 13539-1-AP (PAK6 antibody) at dilution of 1:1000 incubated at room temperature for 1.5 hours.



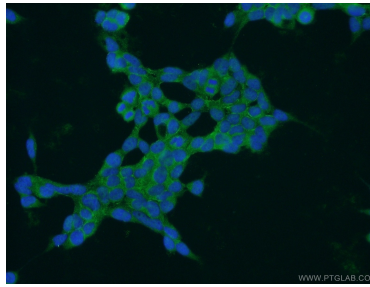
IP result of anti-PAK6 (IP:13539-1-AP, 4 $\mu$ g; Detection:13539-1-AP 1:300) with mouse testis tissue lysate 4000  $\mu$ g.



Immunohistochemical analysis of paraffin-embedded human prostate cancer tissue slide using 13539-1-AP (PAK6 antibody) at dilution of 1:200 (under 10x lens. Heat mediated antigen retrieval with Tris-EDTA buffer (pH 9.0).



Immunohistochemical analysis of paraffin-embedded human prostate cancer tissue slide using 13539-1-AP (PAK6 antibody) at dilution of 1:200 (under 40x lens. Heat mediated antigen retrieval with Tris-EDTA buffer (pH 9.0).



Immunofluorescent analysis of HEK-293 cells using 13539-1-AP (PAK6 antibody) at dilution of 1:50 and Alexa Fluor 488-conjugated AffiniPure Goat Anti-Rabbit IgG(H+L).