

À des fins de recherche uniquement

# Anticorps Polyclonal de lapin anti-CROT



Numéro de catalogue: 13543-1-AP

Phare

3 Publications

## Informations de base

Numéro de catalogue: 13543-1-AP	Numéro d'acquisition GenBank: BC039004	Méthode de purification: Purification par affinité contre l'antigène
Taille: 150ul, Concentration: 750 µg/ml by Nanodrop and 400 µg/ml by Bradford method using BSA as the standard;	Identification du gène (NCBI): 54677	Dilutions recommandées: WB 1:5000-1:50000 IHC 1:20-1:200
Hôte: Lapin	Nom complet: carnitine O-octanoyltransferase	
Isotype: IgG	MW calculé 612 aa, 66 kDa	
Immunogen Catalog Number: AG4486	MW observés: 65-70 kDa	

## Applications

### Applications testées:

FC, IHC, WB, ELISA

### Demandes citées:

IF, IHC, WB

### Spécificité de l'espèce:

Humain, rat, souris

### Espèces citées:

Humain

**Remarque-IHC: il est suggéré de démasquer l'antigène avec un tampon de TE buffer pH 9,0; (\*) À défaut, 'le démasquage de l'antigène peut être effectué avec un tampon citrate pH 6,0.**

### Contrôles positifs:

WB : tissu rénal de souris, tissu hépatique de souris

IHC : tissu de cancer du foie humain,

## Informations générales

CROT, also named as COT, belongs to the carnitine/choline acetyltransferase family. It is a beta-oxidation of fatty acids. The highest activity concerns the C6 to C10 chain length substrate. CROT converts the end product of pristanic acid beta oxidation, 4,8-dimethylnonanoyl-CoA, to its corresponding carnitine ester. Carnitine palmitoyltransferase (CPT) deficiencies are common disorders of mitochondrial fatty acid oxidation. The CPT system is made up of two separate proteins located in the outer (CPT1) and inner (CPT2) mitochondrial membranes. CROT is an active forms for carnitine octanoyltransferase. This antibody can bind the close sequences genes.

## Publications notables

Autrice	Pubmed ID	Journal	Application
Xin Li	36120434	Front Endocrinol (Lausanne)	WB,IHC,IF
Jake Hsu	36587768	J Biol Chem	WB
Jack D Sanford	37307919	J Biol Chem	WB

## Stockage

### Stockage:

Stocker à -20°C. Stable pendant un an après l'expédition.

### Tampon de stockage:

PBS avec azoture de sodium à 0,02 % et glycérol à 50 % pH 7,3

L'aliquotage n'est pas nécessaire pour le stockage à -20C

\*\*\* Les 20ul contiennent 0,1% de BSA.

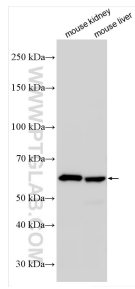
For technical support and original validation data for this product please contact:

T: 1 (888) 4PTGLAB (1-888-478-4522) (toll free in USA), or 1(312) 455-8498 (outside USA)

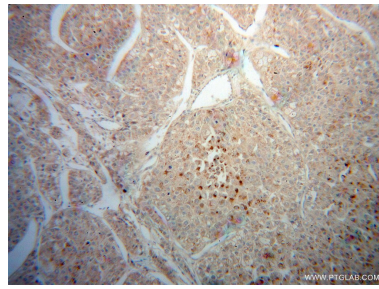
E: proteintech@ptglab.com  
W: ptglab.com

This product is exclusively available under Proteintech Group brand and is not available to purchase from any other manufacturer.

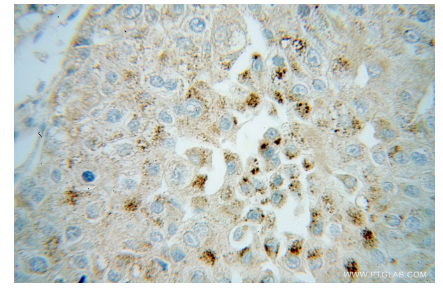
## Données de validation sélectionnées



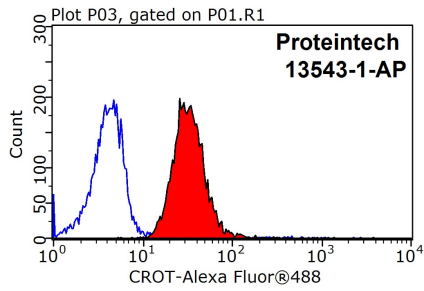
Various lysates were subjected to SDS PAGE followed by western blot with 13543-1-AP (CROT antibody) at dilution of 1:10000 incubated at room temperature for 1.5 hours.



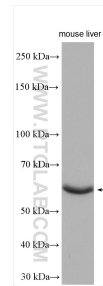
Immunohistochemical analysis of paraffin-embedded human liver cancer using 13543-1-AP (CROT antibody) at dilution of 1:100 (under 10x lens).



Immunohistochemical analysis of paraffin-embedded human liver cancer using 13543-1-AP (CROT antibody) at dilution of 1:100 (under 40x lens).



1X10<sup>6</sup> HepG2 cells were stained with 0.2ug CROT antibody (13543-1-AP, red) and control antibody (blue). Fixed with 90% MeOH blocked with 3% BSA (30 min). Alexa Fluor 488-conjugated AffiniPure Goat Anti-Rabbit IgG(H+L) with dilution 1:1500.



mouse liver tissue were subjected to SDS PAGE followed by western blot with 13543-1-AP (CROT antibody) at dilution of 1:6000 incubated at room temperature for 1.5 hours.