

À des fins de recherche uniquement

# Anticorps Polyclonal de lapin anti-Alpha-2-Macroglobulin



Numéro de catalogue: 13545-1-AP

2 Publications

## Informations de base

Numéro de catalogue:

13545-1-AP

Taille:

150ul, Concentration: 500 µg/ml by Nanodrop and 200 µg/ml by Bradford method using BSA as the standard;

Hôte:

Lapin

Isotype:

IgG

Immunogen Catalog Number:

AG4489

Numéro d'acquisition GenBank:

BC040071

Identification du gène (NCBI):

2

Nom complet:

alpha-2-macroglobulin

MW calculé

1474 aa, 163 kDa

MW observés:

185 kDa

Méthode de purification:

Purification par affinité contre l'antigène

Dilutions recommandées:

WB 1:5000-1:20000

IP 0.5-4.0 ug for IP and 1:500-1:2000 for WB

IHC 1:50-1:500

IF 1:50-1:500

## Applications

Applications testées:

IF, IHC, IP, WB, ELISA

Demandes citées:

WB

Spécificité de l'espèce:

Humain

Espèces citées:

Humain, Plasmodium falciparum

**Remarque-IHC: il est suggéré de démasquer l'antigène avec un tampon de TE buffer pH 9.0; (\*) A défaut, 'le démasquage de l'antigène peut être effectué avec un tampon citrate pH 6,0.**

Contrôles positifs:

WB : tissu sanguin humain, cellules HepG2, tissu cérébral humain, tissu plasmatique humain

IP : cellules HepG2,

IHC : tissu hépatique humain,

IF : cellules HepG2,

## Informations générales

alpha-2-macroglobulin, also known as α2-macroglobulin (α2M or A2M), is a protein abundant in the plasma of vertebrates and several invertebrates. A2M is an evolutionarily conserved arm of the innate immune system. It also mediates the proliferation of T cells and macrophages. A2M acts as a nonspecific protease inhibitor involved in the host defense mechanism that inactivates both endogenous and exogenous proteases, including trypsin, thrombin and collagenase. Even though A2M is produced predominantly by the liver, it may also be expressed in the reproductive tract, heart, and brain, and may have important roles in many physiological processes and medical illnesses including Alzheimer's disease.

## Publications notables

Autrice	Pubmed ID	Journal	Application
Takahiro Tougan	32295584	Malar J	WB
Riikka Lampinen	35456941	Int J Mol Sci	WB

## Stockage

Stockage:

Stocker à -20°C. Stable pendant un an après l'expédition.

Tampon de stockage:

PBS avec azoture de sodium à 0,02 % et glycérol à 50 % pH 7,3

L'aliquotage n'est pas nécessaire pour le stockage à -20C

\*\*\* Les 20ul contiennent 0,1% de BSA.

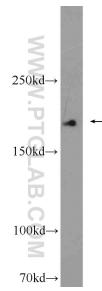
For technical support and original validation data for this product please contact:

T: 1 (888) 4PTGLAB (1-888-478-4522) (toll free in USA), or 1(312) 455-8498 (outside USA)

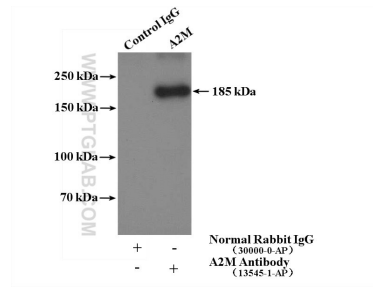
E: proteintech@ptglab.com  
W: ptglab.com

This product is exclusively available under Proteintech Group brand and is not available to purchase from any other manufacturer.

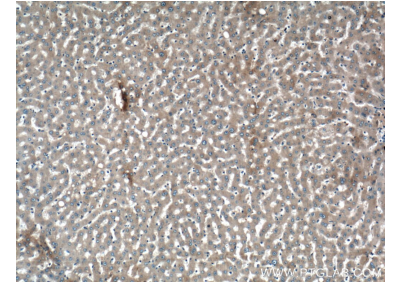
## Données de validation sélectionnées



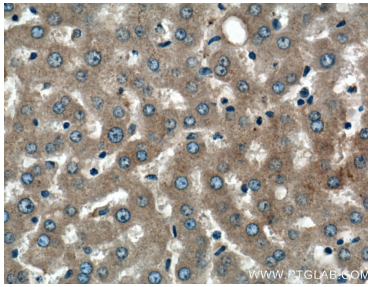
human blood were subjected to SDS PAGE followed by western blot with 13545-1-AP (Alpha-2-macroglobulin antibody) at dilution of 1:6000 incubated at room temperature for 1.5 hours.



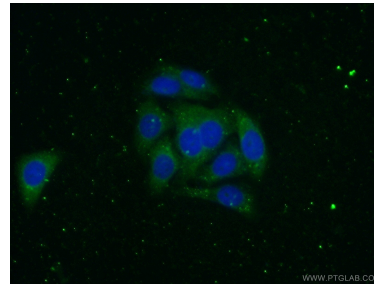
IP result of anti-Alpha-2-macroglobulin (IP:13545-1-AP, 4ug; Detection:13545-1-AP 1:1000) with HepG2 cells lysate 4000 ug.



Immunohistochemical analysis of paraffin-embedded human liver tissue slide using 13545-1-AP (Alpha-2-macroglobulin antibody) at dilution of 1:200 (under 10x lens).



Immunohistochemical analysis of paraffin-embedded human liver tissue slide using 13545-1-AP (Alpha-2-macroglobulin antibody) at dilution of 1:200 (under 40x lens).



Immunofluorescent analysis of (-20°C Ethanol) fixed HepG2 cells using 13545-1-AP (Alpha-2-macroglobulin antibody) at dilution of 1:100 and Alexa Fluor 488-conjugated AffiniPure Goat Anti-Rabbit IgG(H+L).