

À des fins de recherche uniquement

Anticorps Polyclonal de lapin anti-CYP2J2



Numéro de catalogue: 13562-1-AP

5 Publications

Informations de base

Numéro de catalogue: 13562-1-AP	Numéro d'acquisition GenBank: BC032594	Méthode de purification: Purification par affinité contre l'antigène
Taille: 150ul , Concentration: 600 µg/ml by Nanodrop and 233 µg/ml by Bradford method using BSA as the standard;	Identification du gène (NCBI): 1573	Dilutions recommandées: WB 1:1000-1:8000 IHC 1:50-1:500
Hôte: Lapin	Nom complet: cytochrome P450, family 2, subfamily J, polypeptide 2	
Isotype: IgG	MW calculé: 502 aa, 58 kDa	
Immunogen Catalog Number: AG4435	MW observés: 58-65 kDa	

Applications

Applications testées:

IHC, WB, ELISA

Demandes citées:

IF, IHC, WB

Spécificité de l'espèce:

Humain, rat, souris

Espèces citées:

Humain, rat

Remarque-IHC: il est suggéré de démasquer l'antigène avec un tampon de TE buffer pH 9,0; (*) A défaut, 'le démasquage de l'antigène peut être 'effectué avec un tampon citrate pH 6,0.

Contrôles positifs:

WB : cellules HUVEC, cellules HepG2, cellules LO2, tissu cardiaque de rat, tissu cardiaque de souris, tissu de muscle squelettique de souris

IHC : tissu hépatique humain, tissu cardiaque de souris, tissu cardiaque humain, tissu de cancer du foie humain

Informations générales

CYP2J2(Cytochrome P450 2J2) belongs to the cytochrome P450 family. This enzyme metabolizes arachidonic acid predominantly via a NADPH-dependent olefin epoxidation to all four regioisomeric cis-epoxyicosatrienoic acids. The human CYP2J member, CYP2J2, is shown to be expressed in several tissues such as the small intestine, liver, heart, kidney, and lung and may play a role in the oxidative bioactivation of arachidonic acid(PMID:12386130).

Publications notables

Autrice	Pubmed ID	Journal	Application
Xuming Yu	31671426	Pharmacology	WB
Ning Xu	35659036	J Hematol Oncol	IHC
Ye Zhu	31954161	Life Sci	WB,IHC,IF

Stockage

Stockage:

Stocker à -20°C. Stable pendant un an après l'expédition.

Tampon de stockage:

PBS avec azoture de sodium à 0,02 % et glycérol à 50 % pH 7,3

L'aliquotage n'est pas nécessaire pour le stockage à -20C

*** Les 20ul contiennent 0,1% de BSA.

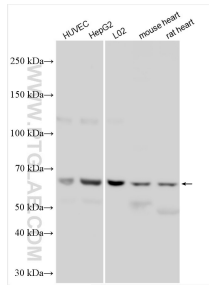
For technical support and original validation data for this product please contact:

T: 1 (888) 4PTGLAB (1-888-478-4522) (toll free in USA), or 1(312) 455-8498 (outside USA)

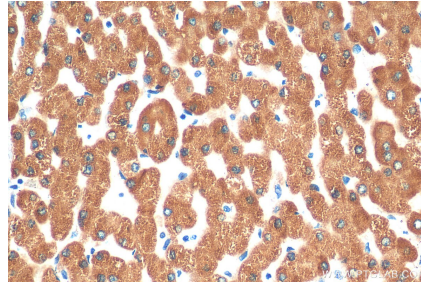
E: proteintech@ptglab.com
W: ptglab.com

This product is exclusively available under Proteintech Group brand and is not available to purchase from any other manufacturer.

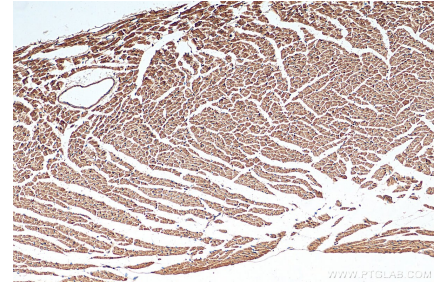
Données de validation sélectionnées



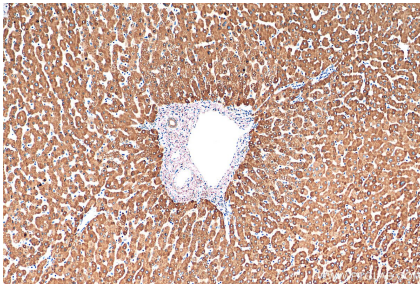
Various lysates were subjected to SDS PAGE followed by western blot with 13562-1-AP (CYP2J2 antibody) at dilution of 1:4000 incubated at room temperature for 1.5 hours.



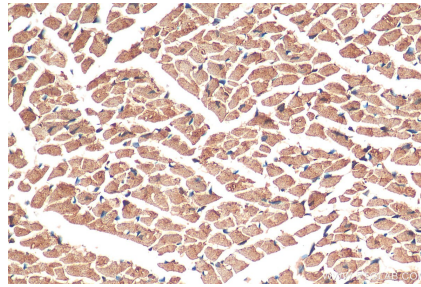
Immunohistochemical analysis of paraffin-embedded human liver tissue slide using 13562-1-AP (CYP2J2 antibody) at dilution of 1:200 (under 40x lens). Heat mediated antigen retrieval with Tris-EDTA buffer (pH 9.0).



Immunohistochemical analysis of paraffin-embedded mouse heart tissue slide using 13562-1-AP (CYP2J2 antibody) at dilution of 1:200 (under 10x lens). Heat mediated antigen retrieval with Tris-EDTA buffer (pH 9.0).



Immunohistochemical analysis of paraffin-embedded human liver tissue slide using 13562-1-AP (CYP2J2 antibody) at dilution of 1:200 (under 10x lens). Heat mediated antigen retrieval with Tris-EDTA buffer (pH 9.0).



Immunohistochemical analysis of paraffin-embedded mouse heart tissue slide using 13562-1-AP (CYP2J2 antibody) at dilution of 1:200 (under 40x lens). Heat mediated antigen retrieval with Tris-EDTA buffer (pH 9.0).