

À des fins de recherche uniquement

Anticorps Polyclonal de lapin anti-KHDRBS3



Numéro de catalogue: 13563-1-AP

Phare

3 Publications

Informations de base

Numéro de catalogue:

13563-1-AP

Taille:

150ul, Concentration: 400 µg/ml by Nanodrop and 220 µg/ml by Bradford method using BSA as the standard;

Hôte:

Lapin

Isotype:

IgG

Immunogen Catalog Number:

AG4438

Numéro d'acquisition GenBank:

BC032606

Identification du gène (NCBI):

10656

Nom complet:

KH domain containing, RNA binding, signal transduction associated 3

MW calculé

346 aa, 38, 8 kDa

MW observés:

55 kDa

Méthode de purification:

Purification par affinité contre l'antigène

Dilutions recommandées:

WB 1:2000-1:12000

IHC 1:20-1:200

Applications

Applications testées:

IHC, WB, ELISA

Demandes citées:

IHC, WB

Spécificité de l'espèce:

Humain, rat, souris

Espèces citées:

Humain, souris

Remarque-IHC: il est suggéré de démasquer l'antigène avec un tampon de TE buffer pH 9,0; (*) A défaut, 'le démasquage de l'antigène peut être 'effectué avec un tampon citrate pH 6,0.

Contrôles positifs:

WB : tissu cérébral de souris, cellules A549, cellules BGC-823, tissu cérébral humain

IHC : tissu de gliome humain,

Informations générales

KH domain-containing, RNA-binding, signal transduction-associated protein 3 (KHDRBS3, SLM2) is a RNA-binding protein that plays a role in the regulation of alternative splicing and influences mRNA splice site selection and exon inclusion (15901763). May play a role as a negative regulator of cell growth. Inhibits cell proliferation. Involved in splice site selection of vascular endothelial growth factor. Induces an increased concentration-dependent incorporation of exon in CD44 pre-mRNA by direct binding to purine-rich exonic enhancer. RNA-binding abilities are down-regulated by tyrosine kinase PTK6. Involved in post-transcriptional regulation of HIV-1 gene expression (11741900). Ubiquitous with higher expression in testis, skeletal muscle and brain. Expressed in the kidney only in podocytes, the glomerular epithelial cells of the kidney. Strongly expressed after meiosis. This antibody is a rabbit polyclonal antibody raised against a full-length human KHDRBS3 protein. The observed molecular weight of KHDRBS3 is about 55kd.

Publications notables

Autrice	Pubmed ID	Journal	Application
Peiqi Wu	31296839	Cell Death Dis	WB
Ehrmann Ingrid I	23637638	PLoS Genet	WB
Neumann Manuela M	22842875	Acta Neuropathol	IHC

Stockage

Stockage:

Stocker à -20°C. Stable pendant un an après l'expédition.

Tampon de stockage:

PBS avec azoture de sodium à 0,02 % et glycérol à 50 % pH 7,3

L'aliquotage n'est pas nécessaire pour le stockage à -20C

*** Les 20ul contiennent 0,1% de BSA.

For technical support and original validation data for this product please contact:

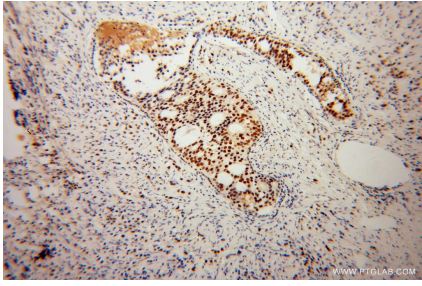
T: 1 (888) 4PTGLAB (1-888-478-4522) (toll free in USA), or 1(312) 455-8498 (outside USA)

E: proteintech@ptglab.com

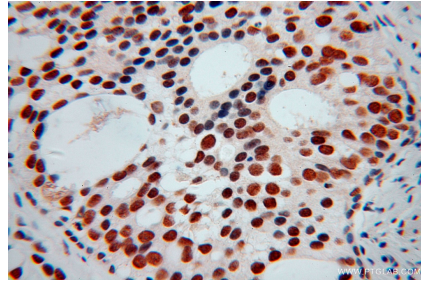
W: ptglab.com

This product is exclusively available under Proteintech Group brand and is not available to purchase from any other manufacturer.

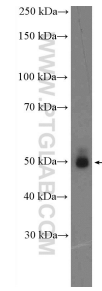
Données de validation sélectionnées



Immunohistochemical analysis of paraffin-embedded human gliomas using 13563-1-AP (KHDRBS3 antibody) at dilution of 1:100 (under 10x lens).



Immunohistochemical analysis of paraffin-embedded human gliomas using 13563-1-AP (KHDRBS3 antibody) at dilution of 1:100 (under 40x lens).



mouse brain tissue were subjected to SDS PAGE followed by western blot with 13563-1-AP (KHDRBS3 Antibody) at dilution of 1:6000 incubated at room temperature for 1.5 hours.