

À des fins de recherche uniquement

Anticorps Polyclonal de lapin anti-MPP2



Numéro de catalogue: 13589-1-AP

Informations de base

Numéro de catalogue: 13589-1-AP	Numéro d'acquisition GenBank: BC030287	Méthode de purification: Purification par affinité contre l'antigène
Taille: 150ul , Concentration: 600 µg/ml by Nanodrop;	Identification du gène (NCBI): 4355	Dilutions recommandées: WB 1:1000-1:5000 IHC 1:200-1:800
Hôte: Lapin	Nom complet: membrane protein, palmitoylated 2 (MAGUK p55 subfamily member 2)	
Isotype: IgG	MW calculé 576 aa, 65 kDa	
Immunogen Catalog Number: AG4223	MW observés: 65 kDa, 60 kDa	

Applications

Applications testées:
IHC, WB, ELISA

Spécificité de l'espèce:
Humain, rat, souris

Remarque-IHC: il est suggéré de démasquer l'antigène avec un tampon de TE buffer pH 9.0; (*) À défaut, 'le démasquage de l'antigène peut être effectué avec un tampon citrate pH 6,0.

Contrôles positifs:

WB : tissu oculaire de souris, tissu rétinien de souris
IHC : tissu cérébral de souris,

Informations générales

Membrane protein palmitoylated 2 (MPP2) is a member of the membrane-associated guanylate kinase (MAGUK) family. MPPs can form diverse protein complexes at the cell membranes and play an important role in cell structure, polarity and cell adhesion. MPP2 is a novel postsynaptic scaffold protein that binds to the synaptic cell adhesion molecule SynCAM1. MPP2 also is a component of AMPA receptor-associated protein complexes.

Stockage

Stockage:

Stocker à -20°C. Stable pendant un an après l'expédition.

Tampon de stockage:

PBS avec azoture de sodium à 0,02 % et glycérol à 50 % pH 7,3

L'aliquotage n'est pas nécessaire pour le stockage à -20C

***** Les 20ul contiennent 0,1% de BSA.**

For technical support and original validation data for this product please contact:

T: 1 (888) 4PTGLAB (1-888-478-4522) (toll free in USA), or 1(312) 455-8498 (outside USA)

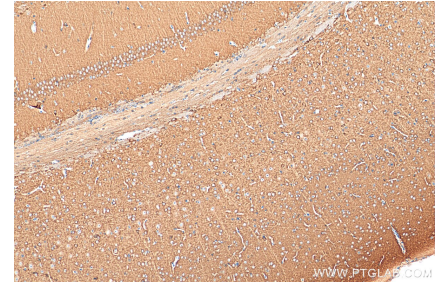
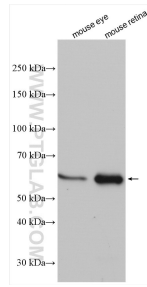
E: proteintech@ptglab.com
W: ptglab.com

This product is exclusively available under Proteintech Group brand and is not available to purchase from any other manufacturer.

Données de validation sélectionnées

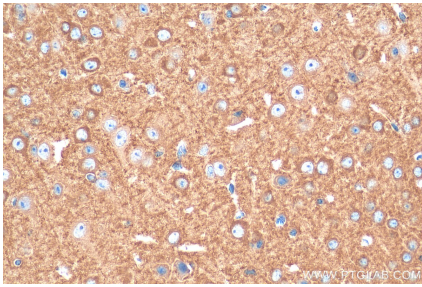


mouse eye tissue were subjected to SDS PAGE followed by western blot with 13589-1-AP (MPP2 antibody) at dilution of 1:3000 incubated at room temperature for 1.5 hours.



Various lysates were subjected to SDS PAGE followed by western blot with 13589-1-AP (MPP2 antibody) at dilution of 1:2500 incubated at room temperature for 1.5 hours.

Immunohistochemical analysis of paraffin-embedded mouse brain tissue slide using 13589-1-AP (MPP2 antibody) at dilution of 1:400 (under 10x lens). Heat mediated antigen retrieval with Tris-EDTA buffer (pH 9.0).



Immunohistochemical analysis of paraffin-embedded mouse brain tissue slide using 13589-1-AP (MPP2 antibody) at dilution of 1:400 (under 40x lens). Heat mediated antigen retrieval with Tris-EDTA buffer (pH 9.0).