

À des fins de recherche uniquement

Anticorps Polyclonal de lapin anti- RIOK3



Numéro de catalogue: 13593-1-AP

Phare

4 Publications

Informations de base

Numéro de catalogue:
13593-1-AP

Taille:
150ul, Concentration: 600 µg/ml by
Nanodrop and 300 µg/ml by Bradford
method using BSA as the standard;

Hôte:
Lapin

Isotype:
IgG

Immunogen Catalog Number:
AG4497

Numéro d'acquisition GenBank:
BC039729

Identification du gène (NCBI):
8780

Nom complet:
RIO kinase 3 (yeast)

MW calculé
516 aa, 60 kDa

MW observés:
60 kDa

Méthode de purification:
Purification par affinité contre
l'antigène

Dilutions recommandées:
WB 1:1000-1:5000
IP 0.5-4.0 ug for IP and 1:500-1:1000
for WB
IHC 1:50-1:500
IF 1:10-1:100

Applications

Applications testées:
IF, IHC, IP, WB, ELISA

Demandes citées:
WB

Spécificité de l'espèce:
Humain, rat, souris

Espèces citées:
Humain, souris

**Remarque-IHC: il est suggéré de démasquer
l'antigène avec un tampon de TE buffer pH
9,0; (*) A défaut, 'le démasquage de
l'antigène peut être 'effectué avec un
tampon citrate pH 6,0.**

Contrôles positifs:

WB : cellules HEK-293T, cellules HeLa, cellules Jurkat,
cellules MCF-7, tissu testiculaire de rat, tissu
testiculaire de souris

IP : tissu testiculaire de souris,

IHC : tissu de cancer du sein humain,

IF : cellules MCF-7,

Informations générales

RIOK3(Serine/threonine-protein kinase RIO3) is initially characterized as a homolog of Aspergillus nidulans sudD and showed down-regulation at the invasive front of malignant melanomas. On Western blots, human RIOK3 migrated as a 60-kD protein. Northern blot analysis indicated that the approximately 4-kb RIOK3 mRNA is expressed widely in human tissues, with additional smaller transcripts present in testis.

Publications notables

Autrice	Pubmed ID	Journal	Application
Min Yu	34572430	Biomedicines	WB
Yong Shen	34161773	Cell Rep	WB
Lingbo Zhang	21196494	Genes Dev	WB

Stockage

Stockage:

Stocker à -20°C. Stable pendant un an après l'expédition.

Tampon de stockage:

PBS avec azoture de sodium à 0,02 % et glycérol à 50 % pH 7,3

L'aliquotage n'est pas nécessaire pour le stockage à -20C

*** Les 20ul contiennent 0,1% de BSA.

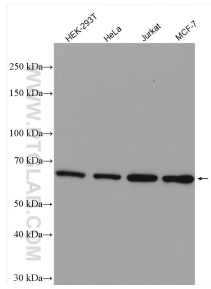
For technical support and original validation data for this product please contact:

T: 1 (888) 4PTGLAB (1-888-478-4522) (toll free
in USA), or 1(312) 455-8498 (outside USA)

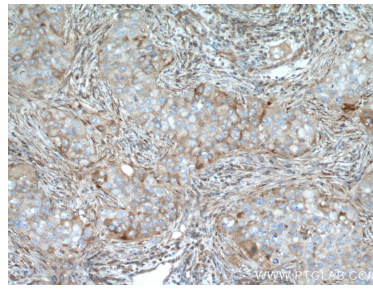
E: proteintech@ptglab.com
W: ptglab.com

This product is exclusively available under Proteintech Group brand and is not available to purchase from any other manufacturer.

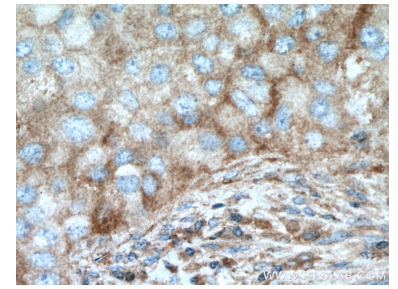
Données de validation sélectionnées



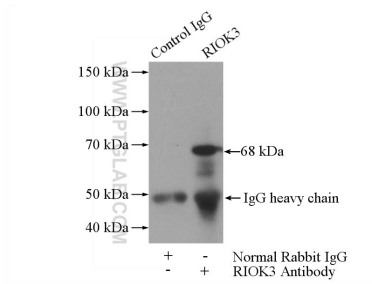
Various lysates were subjected to SDS PAGE followed by western blot with 13593-1-AP (ROK3 antibody) at dilution of 1:3000 incubated at room temperature for 1.5 hours.



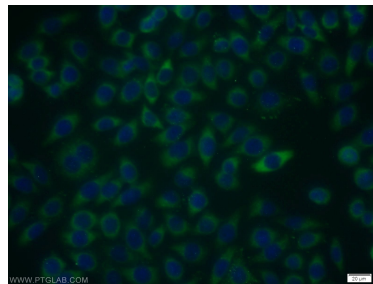
Immunohistochemical analysis of paraffin-embedded human breast cancer tissue slide using 13593-1-AP (ROK3 antibody) at dilution of 1:200 (under 10x lens. Heat mediated antigen retrieval with Tris-EDTA buffer (pH 9.0).



Immunohistochemical analysis of paraffin-embedded human breast cancer tissue slide using 13593-1-AP (ROK3 antibody) at dilution of 1:200 (under 40x lens. Heat mediated antigen retrieval with Tris-EDTA buffer (pH 9.0).



IP Result of anti-ROK3 (IP:13593-1-AP, 4ug; Detection:13593-1-AP 1:600) with mouse testis tissue lysate 4000ug.



Immunofluorescent analysis of MCF-7 cells using 13593-1-AP (ROK3 antibody) at dilution of 1:25 and Alexa Fluor 488-conjugated AffiniPure Goat Anti-Rabbit IgG(H+L).