

À des fins de recherche uniquement

Anticorps Polyclonal de lapin anti-SLC22A2



Numéro de catalogue: 13594-1-AP

2 Publications

Informations de base

Numéro de catalogue:
13594-1-AP

Taille:
150ul, Concentration: 133 µg/ml by Nanodrop and 133 µg/ml by Bradford method using BSA as the standard;

Hôte:
Lapin

Isotype:
IgG

Immunogen Catalog Number:
AG4500

Numéro d'acquisition GenBank:
BC039899

Identification du gène (NCBI):
6582

Nom complet:
solute carrier family 22 (organic cation transporter), member 2

MW calculé:
555 aa, 63 kDa

MW observés:
60-70 kDa

Méthode de purification:
Purification par affinité contre l'antigène

Dilutions recommandées:
WB 1:500-1:3000

Applications

Applications testées:
WB, ELISA

Demandes citées:
WB

Spécificité de l'espèce:
Humain, rat, souris

Espèces citées:
Humain, souris

Contrôles positifs:

WB : tissu rénal de souris, cellules HEK-293, tissu rénal de rat

Informations générales

SLC22A2, also named as OCT2, belongs to the major facilitator (TC 2.A.1) superfamily and Organic cation transporter (TC 2.A.1.19) family. The SLC22A2 gene encodes for the organic cation transporter 2 (OCT2) protein which acts as a renal uptake transporter. Human OCT2 (hOCT2) is expressed on the basolateral side of the proximal tubule cells and plays a crucial role in the disposition and renal clearance of cationic drugs and endogenous compounds (PMID: 35143948). SLC22A2 has 3 isoforms with the molecular mass of 27, 54 and 63 kDa. Sometimes higher molecular weight around 70 kDa can also be observed, which may be a modified variant of SLC22A2.

Publications notables

Autrice	Pubmed ID	Journal	Application
Ching-Feng Chiu	36076515	Biomed Pharmacother	WB
Xiangyi Wang	37577390	J Pharm Anal	WB

Stockage

Stockage:
Stocker à -20°C. Stable pendant un an après l'expédition.

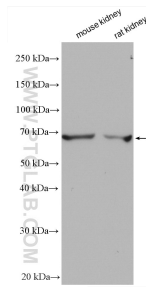
Tampon de stockage:
PBS avec azoture de sodium à 0,02 % et glycérol à 50 % pH 7,3
L'aliquotage n'est pas nécessaire pour le stockage à -20C

*** Les 20ul contiennent 0,1% de BSA.

For technical support and original validation data for this product please contact:
T: 1 (888) 4PTGLAB (1-888-478-4522) (toll free in USA), or 1(312) 455-8498 (outside USA)
E: proteintech@ptglab.com
W: ptglab.com

This product is exclusively available under Proteintech Group brand and is not available to purchase from any other manufacturer.

Données de validation sélectionnées



Various lysates were subjected to SDS PAGE followed by western blot with 13594-1-AP (SLC22A2 antibody) at dilution of 1:1500 incubated at room temperature for 1.5 hours.