

À des fins de recherche uniquement

Anticorps Polyclonal de lapin anti-SUR2/ABCC9



Numéro de catalogue: 13599-1-AP

Informations de base

Numéro de catalogue: 13599-1-AP	Numéro d'acquisition GenBank: BC033804	Méthode de purification: Purification par affinité contre l'antigène
Taille: 150ul , Concentration: 650 µg/ml by Nanodrop;	Identification du gène (NCBI): 10060	Dilutions recommandées: WB 1:500-1:1000
Hôte: Lapin	Nom complet: ATP-binding cassette, sub-family C (CFTR/MRP), member 9	
Isotype: IgG	MW calculé: 1549 aa, 174 kDa	
Immunogen Catalog Number: AG4536	MW observés: 174 kDa	

Applications

Applications testées: WB, ELISA	Contrôles positifs: WB : tissu cardiaque de souris, tissu de muscle squelettique de souris
Spécificité de l'espèce: Humain, souris	

Informations générales

ABCC9, also known as SUR2, belongs to the ABC transporter superfamily. ABCC9 is a subunit of ATP-sensitive potassium channels (KATP), forming cardiac and smooth muscle-type KATP channels with KCNJ11. KCNJ11 forms the channel pore while ABCC9 is required for activation and regulation (PMID: 9831708). ABCC9 is thought to form ATP-sensitive potassium channels in cardiac, skeletal, vascular, and non-vascular smooth muscle. Defects in ABCC9 cause dilated cardiomyopathy 10 and familial atrial fibrillation type 12 (ATFB12)(PMID: 15034580,17245405).

Stockage

Stockage:
Stocker à -20°C. Stable pendant un an après l'expédition.
Tampon de stockage:
PBS avec azoture de sodium à 0,02 % et glycérol à 50 % pH 7,3
L'aliquotage n'est pas nécessaire pour le stockage à -20C

***** Les 20ul contiennent 0,1% de BSA.**

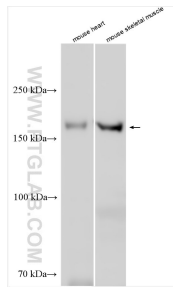
For technical support and original validation data for this product please contact:

T: 1 (888) 4PTGLAB (1-888-478-4522) (toll free in USA), or 1(312) 455-8498 (outside USA)

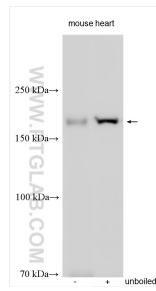
E: proteintech@ptglab.com
W: ptglab.com

This product is exclusively available under Proteintech Group brand and is not available to purchase from any other manufacturer.

Données de validation sélectionnées



Various lysates were subjected to SDS PAGE followed by western blot with 13599-1-AP (SUR2/ABCC9 antibody) at dilution of 1:500 incubated at room temperature for 1.5 hours.



mouse heart were subjected to SDS PAGE followed by western blot with 13599-1-AP (SUR2/ABCC9 antibody) at dilution of 1:500 incubated at room temperature for 1.5 hours.