

À des fins de recherche uniquement

Anticorps Polyclonal de lapin anti-LSAMP



Numéro de catalogue: 13600-1-AP

Informations de base

Numéro de catalogue: 13600-1-AP	Numéro d'acquisition GenBank: BC033803	Méthode de purification: Purification par affinité contre l'antigène
Taille: 150ul , Concentration: 133 µg/ml by Nanodrop and 133 µg/ml by Bradford method using BSA as the standard;	Identification du gène (NCBI): 4045	Dilutions recommandées: WB 1:500-1:2000
Hôte: Lapin	Nom complet: limbic system-associated membrane protein	
Isotype: IgG	MW calculé 338 aa, 37 kDa	
Immunogen Catalog Number: AG4542	MW observés: 64-68 kDa	

Applications

Applications testées: WB, ELISA	Contrôles positifs: WB : tissu cérébral humain, tissu cérébral de souris
Spécificité de l'espèce: Humain, rat, souris	

Informations générales

LSAMP, also known as LAMP, is a 64-68 kDa heavily glycosylated neural cell adhesion molecule expressed on the neuronal dendrites and somata (PMID: 1688937; 8666243). LSAMP is a member of the IgLON family. The amino acid sequence of LSAMP is highly conserved among species. Human LSAMP shares 99% amino acid sequence identity with rodent LSAMP. The impact of LSAMP protein on neurite outgrowth and neuronal connectivity has been established in a wide spectrum of psychiatric disorders in humans (PMID: 26136648). In mice, lack of LSAMP protein seemingly leads to a deterioration in the ability to adapt to novel stressful environments and stimuli (PMID: 22155487).

Stockage

Stockage:
Stocker à -20°C. Stable pendant un an après l'expédition.
Tampon de stockage:
PBS avec azoture de sodium à 0,02 % et glycérol à 50 % pH 7,3
L'aliquotage n'est pas nécessaire pour le stockage à -20C

***** Les 20ul contiennent 0,1% de BSA.**

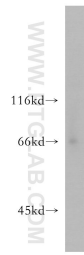
For technical support and original validation data for this product please contact:

T: 1 (888) 4PTGLAB (1-888-478-4522) (toll free in USA), or 1(312) 455-8498 (outside USA)

E: proteintech@ptglab.com
W: ptglab.com

This product is exclusively available under Proteintech Group brand and is not available to purchase from any other manufacturer.

Données de validation sélectionnées



human brain tissue were subjected to SDS PAGE followed by western blot with 13600-1-AP (LSAMP antibody) at dilution of 1:300 incubated at room temperature for 1.5 hours.