

À des fins de recherche uniquement

# Anticorps Polyclonal de lapin anti-IFT20



Numéro de catalogue: 13615-1-AP

Phare

62 Publications

## Informations de base

Numéro de catalogue:

13615-1-AP

Taille:

150ul, Concentration: 400 µg/ml by Nanodrop;

Hôte:

Lapin

Isotype:

IgG

Immunogen Catalog Number:

AG4521

Numéro d'acquisition GenBank:

BC038094

Identification du gène (NCBI):

90410

Nom complet:

intraflagellar transport 20 homolog (Chlamydomonas)

MW calculé

15 kDa

MW observés:

15-18 kDa

Méthode de purification:

Purification par affinité contre l'antigène

Dilutions recommandées:

WB 1:300-1:800

IP 0.5-4.0 µg for IP and 1:500-1:1000 for WB

IHC 1:20-1:200

IF 1:20-1:200

## Applications

Applications testées:

IF, IHC, IP, WB, ELISA

Demandes citées:

CoIP, FC, IF, IHC, IP, WB

Spécificité de l'espèce:

canin, Humain, rat, souris

Espèces citées:

canin, Humain, poisson-zèbre, rat, souris

**Remarque-IHC: il est suggéré de démasquer l'antigène avec un tampon de TE buffer pH 9,0; (\*) À défaut, le démasquage de l'antigène peut être effectué avec un tampon citrate pH 6,0.**

Contrôles positifs:

WB : cellules HEK-293, cellules MDCK, tissu testiculaire de rat, tissu testiculaire de souris

IP : tissu testiculaire de souris,

IHC : tissu de cancer de l'endomètre humain,

IF : cellules hTERT-RPE1, cellules MDCK

## Informations générales

Intraflagellar transport (IFT), mediated by molecular motors and IFT particles, is an important transport process that occurs in the cilium. IFT particles are multi-subunit complexes that are made up of complex A and complex B. IFT20 is a component of IFT complex B and involved in ciliary process assembly. It is associated with the Golgi complex and plays a role in the trafficking of ciliary membrane proteins from the Golgi complex to the cilium.

## Publications notables

Autrice	Pubmed ID	Journal	Application
Hiroyuki Yamaguchi	32988591	Biochem Biophys Res Commun	WB
Oliva Palander	33124112	FASEB J	IF
Roxane Van Heurck	36334595	Neuron	IF

## Stockage

Stockage:

Stocker à -20°C. Stable pendant un an après l'expédition.

Tampon de stockage:

PBS avec azoture de sodium à 0,02 % et glycérol à 50 % pH 7,3

L'aliquotage n'est pas nécessaire pour le stockage à -20C

\*\*\* Les 20ul contiennent 0,1% de BSA.

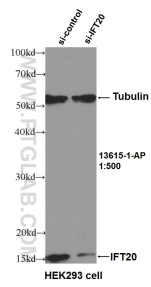
For technical support and original validation data for this product please contact:

T: 1 (888) 4PTGLAB (1-888-478-4522) (toll free in USA), or 1(312) 455-8498 (outside USA)

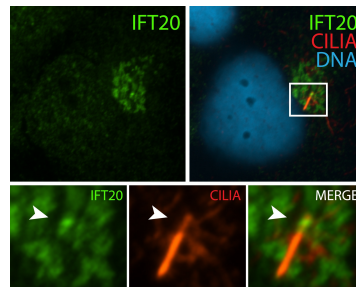
E: proteintech@ptglab.com  
W: ptglab.com

This product is exclusively available under Proteintech Group brand and is not available to purchase from any other manufacturer.

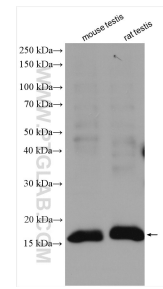
## Données de validation sélectionnées



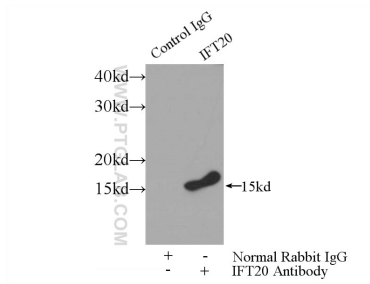
WB result of IFT20 antibody (13615-1-AP, 1:500) with si-Control and si-IFT20 transfected HEK293 cells.



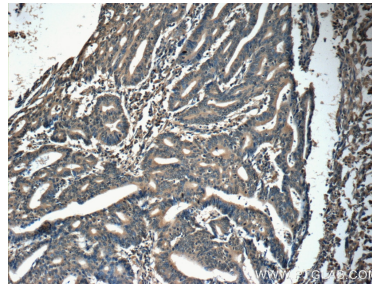
IF result (localization to Golgi-like structures) of anti-IFT20 (13615-1-AP, 1:50) with serum-starved hTERT-RPE1 (MoTH fixed) by Dr. Moshe Kim.



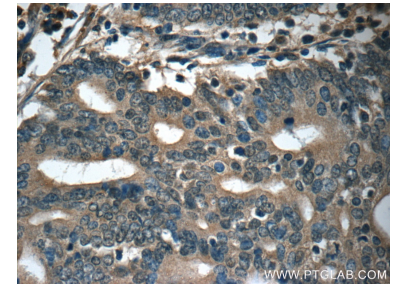
Various lysates were subjected to SDS PAGE followed by western blot with 13615-1-AP (IFT20 antibody) at dilution of 1:800 incubated at room temperature for 1.5 hours.



IP Result of anti-IFT20 (IP:13615-1-AP, 3ug; Detection:13615-1-AP 1:700) with mouse testis tissue lysate 4000ug.



Immunohistochemical analysis of paraffin-embedded human endometrial cancer tissue slide using 13615-1-AP (IFT20 Antibody) at dilution of 1:50 (under 10x lens).



Immunohistochemical analysis of paraffin-embedded human endometrial cancer tissue slide using 13615-1-AP (IFT20 Antibody) at dilution of 1:50 (under 40x lens).