

À des fins de recherche uniquement

# Anticorps Polyclonal de lapin anti-HSPA6



Numéro de catalogue: 13616-1-AP

9 Publications

## Informations de base

<b>Numéro de catalogue:</b> 13616-1-AP	<b>Numéro d'acquisition GenBank:</b> BC035665	<b>Méthode de purification:</b> Purification par affinité contre l'antigène
<b>Taille:</b> 150ul , Concentration: 1000 µg/ml by Nanodrop and 400 µg/ml by Bradford method using BSA as the standard;	<b>Identification du gène (NCBI):</b> 3310	<b>Dilutions recommandées:</b> WB 1:500-1:4000 IHC 1:20-1:200
<b>Hôte:</b> Lapin	<b>Nom complet:</b> heat shock 70kDa protein 6 (HSP70B)	
<b>Isotype:</b> IgG	<b>MW calculé:</b> 643 aa, 71 kDa	
<b>Immunogen Catalog Number:</b> AG4522	<b>MW observés:</b> 68-71 kDa	

## Applications

### Applications testées:

IHC, WB, ELISA

### Demandes citées:

IF, IHC, WB

### Spécificité de l'espèce:

Humain

### Espèces citées:

Humain, porc, souris

**Remarque-IHC: il est suggéré de démasquer l'antigène avec un tampon de TE buffer pH 9,0; (\*) A défaut, 'le démasquage de l'antigène peut être effectué avec un tampon citrate pH 6,0.**

### Contrôles positifs:

WB : cellules HL-60, cellules MCF-7, cellules U-937

IHC : tissu de cancer du poumon humain,

## Informations générales

HSPA6 (also known as HSP70B) is a member of the HSPA (HSP70) family of heat-shock proteins which are highly conserved chaperons implicated in protein folding, protein refolding, protein transport, and protein targeting. Human HSP70B is known to be strictly inducible and shows very low or no basal expression levels in most cells. HSPA6 induction has been exploited as a reasonable biomarker of cellular stresses and its mRNA expression levels have been shown to be significantly induced against a variety of cellular stresses. This antibody was raised against the C-terminal region of human HSPA6 and it may cross-react with HSPA1 (HSP70), HSPA1L and HSPA2. (18229458)

## Publications notables

Autrice	Pubmed ID	Journal	Application
Junyi Tang	33833821	Evid Based Complement Alternat Med	WB
Da-Wei Wang	32154766	Biosci Biotechnol Biochem	WB
Anouk Regeling	26826017	Biochim Biophys Acta	IHC

## Stockage

### Stockage:

Stocker à -20°C. Stable pendant un an après l'expédition.

### Tampon de stockage:

PBS avec azoture de sodium à 0,02 % et glycérol à 50 % pH 7,3

L'aliquotage n'est pas nécessaire pour le stockage à -20C

\*\*\* Les 20ul contiennent 0,1% de BSA.

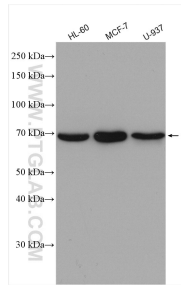
For technical support and original validation data for this product please contact:

T: 1 (888) 4PTGLAB (1-888-478-4522) (toll free in USA), or 1(312) 455-8498 (outside USA)

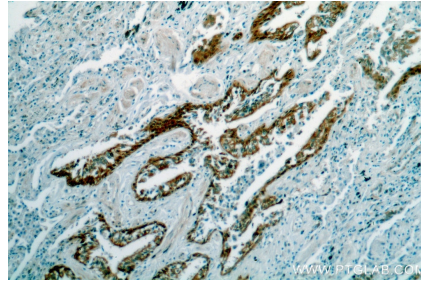
E: [proteintech@ptglab.com](mailto:proteintech@ptglab.com)  
W: [ptglab.com](http://ptglab.com)

This product is exclusively available under Proteintech Group brand and is not available to purchase from any other manufacturer.

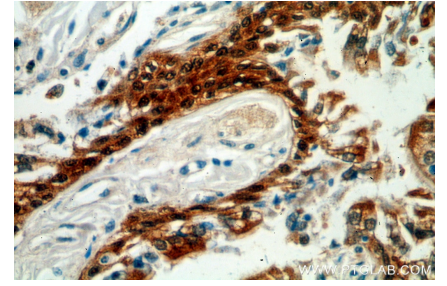
## Données de validation sélectionnées



Various lysates were subjected to SDS PAGE followed by western blot with 13616-1-AP (HSPA6 antibody) at dilution of 1:1000 incubated at room temperature for 1.5 hours.



Immunohistochemical analysis of paraffin-embedded human lung cancer using 13616-1-AP (HSPA6 antibody) at dilution of 1:50 (under 10x lens).



Immunohistochemical analysis of paraffin-embedded human lung cancer using 13616-1-AP (HSPA6 antibody) at dilution of 1:50 (under 40x lens).