

À des fins de recherche uniquement

Anticorps Polyclonal de lapin anti-SERCA3



Numéro de catalogue: 13619-1-AP

2 Publications

Informations de base

Numéro de catalogue:

13619-1-AP

Taille:

150ul, Concentration: 300 µg/ml by Nanodrop and 233 µg/ml by Bradford method using BSA as the standard;

Hôte:

Lapin

Isotype:

IgG

Immunogen Catalog Number:

AG4527

Numéro d'acquisition GenBank:

BC035729

Identification du gène (NCBI):

489

Nom complet:

ATPase, Ca++ transporting, ubiquitous

MW calculé

1043 aa, 114 kDa

MW observés:

97-110 kDa

Méthode de purification:

Purification par affinité contre l'antigène

Dilutions recommandées:

WB 1:2000-1:12000

IP 0.5-4.0 ug for IP and 1:500-1:1000 for WB

IHC 1:20-1:200

Applications

Applications testées:

IHC, IP, WB, ELISA

Demandes citées:

WB

Spécificité de l'espèce:

Humain, rat, souris

Espèces citées:

Humain, souris

Remarque-IHC: il est suggéré de démasquer l'antigène avec un tampon de TE buffer pH 9,0; (*) A défaut, 'le démasquage de l'antigène peut être 'effectué avec un tampon citrate pH 6,0.

Contrôles positifs:

WB : tissu cardiaque de souris, cellules K-562

IP : tissu de muscle squelettique de souris,

IHC : tissu de cancer du pancréas humain,

Informations générales

The SERCA, which pumps cytosolic Ca²⁺ into the ER, is an imperative maintainer of ER Ca²⁺ homeostasis. The mammalian SERCA family is comprised of three tissue-specific members, SERCA1-3. SERCA3 is present in endothelial and epithelial cells of various tissues. SERCA3 helps regulate intracellular Ca²⁺, which is critical for maintaining normal INS secretion and is closely linked to metabolism, neuronal plasticity, gene transcription, cell growth, differentiation, apoptosis, protein folding and carcinogenesis. Several isoforms of SERCA3 exist due to the alternative splicing.

Publications notables

| Autrice | Pubmed ID | Journal | Application |
|---------------|-----------|------------------|-------------|
| Minmin Fan | 36561988 | Acta Pharm Sin B | WB |
| Hengjiang Guo | 28066247 | Front Pharmacol | WB |

Stockage

Stockage:

Stocker à -20°C. Stable pendant un an après l'expédition.

Tampon de stockage:

PBS avec azoture de sodium à 0,02 % et glycérol à 50 % pH 7,3

L'aliquotage n'est pas nécessaire pour le stockage à -20C

*** Les 20ul contiennent 0,1% de BSA.

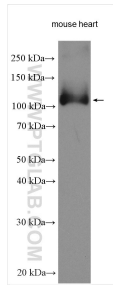
For technical support and original validation data for this product please contact:

T: 1 (888) 4PTGLAB (1-888-478-4522) (toll free in USA), or 1(312) 455-8498 (outside USA)

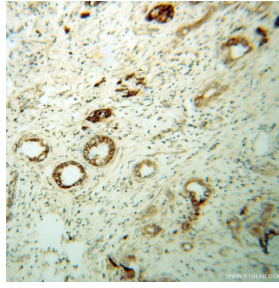
E: proteintech@ptglab.com
W: ptglab.com

This product is exclusively available under Proteintech Group brand and is not available to purchase from any other manufacturer.

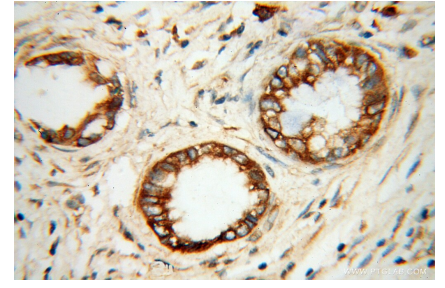
Données de validation sélectionnées



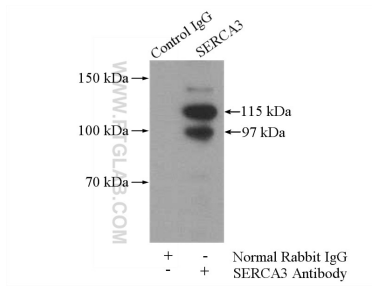
Mouse heart lysates were subjected to SDS PAGE followed by western blot with 13619-1-AP (SERCA3 antibody) at dilution of 1:6000 incubated at room temperature for 1.5 hours.



Immunohistochemical analysis of paraffin-embedded human pancreas cancer using 13619-1-AP (SERCA3 antibody) at dilution of 1:100 (under 10x lens).



Immunohistochemical analysis of paraffin-embedded human pancreas cancer using 13619-1-AP (SERCA3 antibody) at dilution of 1:100 (under 40x lens).



IP Result of anti-SERCA3 (IP:13619-1-AP, 4ug; Detection:13619-1-AP 1:500) with mouse skeletal muscle tissue lysate 3600ug.