

À des fins de recherche uniquement

Anticorps Polyclonal de lapin anti-POLI



Numéro de catalogue: 13635-1-AP

Phare

9 Publications

Informations de base

Numéro de catalogue:

13635-1-AP

Taille:

150ul, Concentration: 200 µg/ml by Nanodrop and 180 µg/ml by Bradford method using BSA as the standard;

Hôte:

Lapin

Isotype:

IgG

Immunogen Catalog Number:

AG4563

Numéro d'acquisition GenBank:

BC032662

Identification du gène (NCBI):

11201

Nom complet:

polymerase (DNA directed) iota

MW calculé

715 aa, 80 kDa

MW observés:

87 kDa

Méthode de purification:

Purification par affinité contre l'antigène

Dilutions recommandées:

WB 1:500-1:2000

IP 0.5-4.0 ug for IP and 1:500-1:2000 for WB

IHC 1:20-1:200

Applications

Applications testées:

IHC, IP, WB, ELISA

Demandes citées:

IF, IHC, WB

Spécificité de l'espèce:

Humain, rat, souris

Espèces citées:

Humain, Moustique, souris

Remarque-IHC: il est suggéré de démasquer l'antigène avec un tampon de TE buffer pH 9,0; (*) A défaut, 'le démasquage de l'antigène peut être 'effectué avec un tampon citrate pH 6,0.

Contrôles positifs:

WB : tissu testiculaire de souris, tissu cardiaque humain, tissu testiculaire de rat

IP : tissu testiculaire de souris,

IHC : tissu de cancer du pancréas humain,

Informations générales

Mammalian Pol I owns an unusual combination of properties: it is stimulated by Mn²⁺ ions, can bypass some DNA lesions and misincorporates "G" opposite template "T" more frequently than incorporates the correct "A." [PMID:21304950] It also was shown to possess dRP lyase activity. In addition, Pol I is much more efficient in the presence of Mn²⁺ in comparison to Mg²⁺. [PMID:17609217]. It has been proposed that POLI involves in immunoglobulin somatic hypermutation (SHM), bypass of deaminated cytosines, several adducts of the purine bases. DNA strand crosslinks and is involved in DNA repair under oxidative stress [PMID:15199127].

Publications notables

Autrice	Pubmed ID	Journal	Application
Chao He	28905458	Cancer Sci	WB, IHC
Zhenzi Su	34354953	Front Oncol	WB
M Iguchi	23955086	Oncogene	WB

Stockage

Stockage:

Stocker à -20°C. Stable pendant un an après l'expédition.

Tampon de stockage:

PBS avec azoture de sodium à 0,02 % et glycérol à 50 % pH 7,3

L'aliquotage n'est pas nécessaire pour le stockage à -20C

*** Les 20ul contiennent 0,1% de BSA.

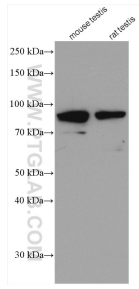
For technical support and original validation data for this product please contact:

T: 1 (888) 4PTGLAB (1-888-478-4522) (toll free in USA), or 1(312) 455-8498 (outside USA)

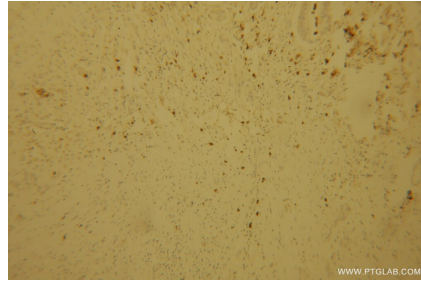
E: proteintech@ptglab.com
W: ptglab.com

This product is exclusively available under Proteintech Group brand and is not available to purchase from any other manufacturer.

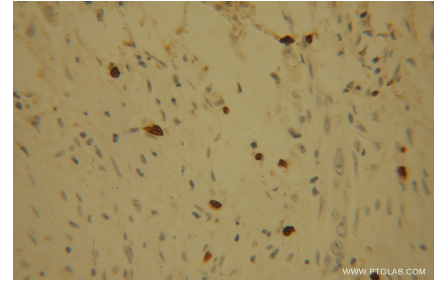
Données de validation sélectionnées



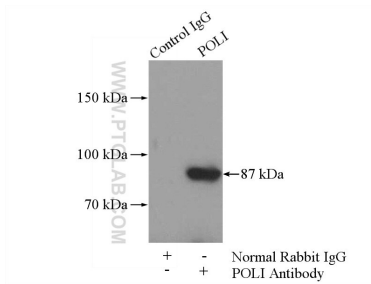
Various lysates were subjected to SDS PAGE followed by western blot with 13635-1-AP (POLI antibody) at dilution of 1:1000 incubated at room temperature for 1.5 hours.



Immunohistochemical analysis of paraffin-embedded human pancreas cancer using 13635-1-AP (POLI antibody) at dilution of 1:100 (under 10x lens).



Immunohistochemical analysis of paraffin-embedded human pancreas cancer using 13635-1-AP (POLI antibody) at dilution of 1:100 (under 40x lens).



IP Result of anti-POLI (IP:13635-1-AP, 4ug; Detection:13635-1-AP 1:1000) with mouse testis tissue lysate 4000ug.