

À des fins de recherche uniquement

# Anticorps Polyclonal de lapin anti-TULP3



Numéro de catalogue: 13637-1-AP

Phare

12 Publications

## Informations de base

Numéro de catalogue:  
13637-1-AP

Taille:  
150ul, Concentration: 450 µg/ml by Nanodrop and 180 µg/ml by Bradford method using BSA as the standard;

Hôte:  
Lapin

Isotype:  
IgG

Immunogen Catalog Number:  
AG4570

Numéro d'acquisition GenBank:  
BC032587

Identification du gène (NCBI):  
7289

Nom complet:  
tubby like protein 3

MW calculé  
442 aa, 50 kDa

MW observés:  
60 kDa

Méthode de purification:  
Purification par affinité contre l'antigène

Dilutions recommandées:  
WB 1:500-1:1000  
IP 0.5-4.0 ug for IP and 1:500-1:1000 for WB  
IHC 1:50-1:500

## Applications

Applications testées:  
IHC, IP, WB, ELISA

Demandes citées:  
IF, IHC, WB

Spécificité de l'espèce:  
Humain, rat, souris

Espèces citées:  
Humain, souris

**Remarque-IHC: il est suggéré de démasquer l'antigène avec un tampon de TE buffer pH 9,0; (\*) A défaut, 'le démasquage de l'antigène peut être 'effectué avec un tampon citrate pH 6,0.**

Contrôles positifs:

WB : cellules SH-SY5Y,

IP : cellules SH-SY5Y,

IHC : tissu de tumeur ovarienne humain, tissu de gliome humain

## Informations générales

The tubby-like protein 3 (TULP3) has been identified as a member of tubby and tubby-like proteins (TULPs) that plays an important role in maintenance and function of neuronal cells during development and post-differentiation. Tulp3 gene is essential for embryonic development in mice. Recently TULP3 has been reported to bind to the IFT (intraflagellar transport)-A complex and promote trafficking of G protein-coupled receptors into primary cilia, which is implicated in regulating neuronal function.

## Publications notables

Autrice	Pubmed ID	Journal	Application
Dario Cilleros-Rodriguez	36063381	Elife	WB,IF
Chen-Jei Hong	27727273	PLoS Genet	WB
Leah Schembs	35584663	Cell Rep	IF

## Stockage

Stockage:

Stocker à -20°C. Stable pendant un an après l'expédition.

Tampon de stockage:

PBS avec azoture de sodium à 0,02 % et glycérol à 50 % pH 7,3

L'aliquotage n'est pas nécessaire pour le stockage à -20C

\*\*\* Les 20ul contiennent 0,1% de BSA.

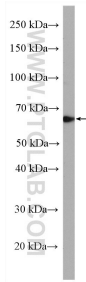
For technical support and original validation data for this product please contact:

T: 1 (888) 4PTGLAB (1-888-478-4522) (toll free in USA), or 1(312) 455-8498 (outside USA)

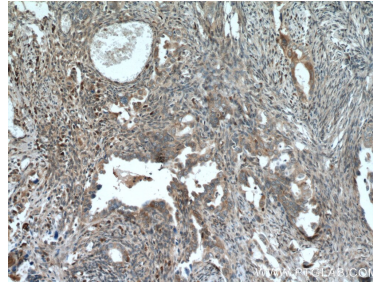
E: proteintech@ptglab.com  
W: ptglab.com

This product is exclusively available under Proteintech Group brand and is not available to purchase from any other manufacturer.

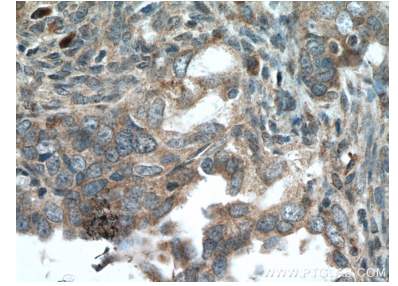
## Données de validation sélectionnées



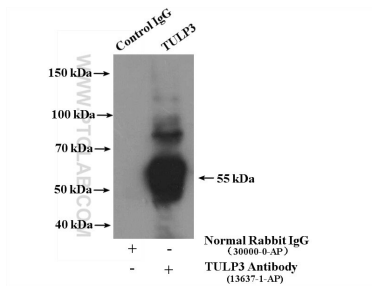
SH-SY5Y cells were subjected to SDS PAGE followed by western blot with 13637-1-AP (TULP3 antibody) at dilution of 1:600 incubated at room temperature for 1.5 hours.



Immunohistochemical analysis of paraffin-embedded human ovary tumor tissue slide using 13637-1-AP (TULP3 antibody) at dilution of 1:200 (under 10x lens. Heat mediated antigen retrieval with Tris-EDTA buffer (pH 9.0).



Immunohistochemical analysis of paraffin-embedded human ovary tumor tissue slide using 13637-1-AP (TULP3 antibody) at dilution of 1:200 (under 40x lens. Heat mediated antigen retrieval with Tris-EDTA buffer (pH 9.0).



IP Result of anti-TULP3 (IP:13637-1-AP, 4ug; Detection:13637-1-AP 1:800) with SH-SY5Y cells lysate 1600ug.