

À des fins de recherche uniquement

Anticorps Polyclonal de lapin anti-NR2C1



Numéro de catalogue: 13658-1-AP

Informations de base

Numéro de catalogue: 13658-1-AP	Numéro d'acquisition GenBank: BC040141	Méthode de purification: Purification par affinité contre l'antigène
Taille: 150ul, Concentration: 140 µg/ml by Nanodrop and 140 µg/ml by Bradford method using BSA as the standard;	Identification du gène (NCBI): 7181	Dilutions recommandées: WB 1:500-1:1000 IHC 1:20-1:200
Hôte: Lapin	Nom complet: nuclear receptor subfamily 2, group C, member 1	
Isotype: IgG	MW calculé: 467 aa, 52 kDa	
Immunogen Catalog Number: AG4554	MW observés: 52 kDa	

Applications

Applications testées: IHC, WB, ELISA	Contrôles positifs: WB : cellules SH-SY5Y, cellules PC-3 IHC : tissu de cancer de la prostate humain,
Spécificité de l'espèce: Humain, rat, souris	
Remarque-IHC: il est suggéré de démasquer l'antigène avec un tampon de TE buffer pH 9,0; (*) À défaut, le démasquage de l'antigène peut être effectué avec un tampon citrate pH 6,0.	

Informations générales

Nuclear receptor subfamily 2 group C member 1 (NR2C1), also known as Orphan nuclear receptor TR2, is a member of the steroid/thyroid hormone receptor superfamily that controls a variety of processes, including growth, differentiation and development. TR2 is known to bind to regulatory elements of the erythropoietin gene, the muscle-specific aldolase A gene and the CNTF-15 gene. In addition to TR2, a related orphan receptor, designated TR4, has been identified. TR4 forms heterodimers with TR2, which are thought to be involved in neurogenesis and germ cell development. TR2 is known to be downregulated by both p53 and ionizing radiation, and it may play a role in linking p53 to members of the steroid receptor family.

Stockage

Stockage:
Stocker à -20°C. Stable pendant un an après l'expédition.
Tampon de stockage:
PBS avec azoture de sodium à 0,02 % et glycérol à 50 % pH 7,3
L'aliquotage n'est pas nécessaire pour le stockage à -20C

*** Les 20ul contiennent 0,1% de BSA.

For technical support and original validation data for this product please contact:

T: 1 (888) 4PTGLAB (1-888-478-4522) (toll free in USA), or 1(312) 455-8498 (outside USA)

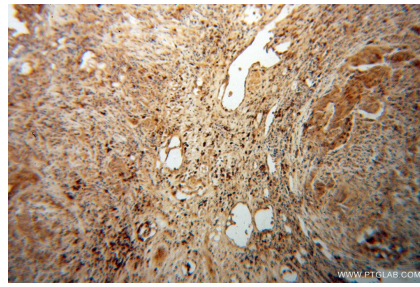
E: proteintech@ptglab.com
W: ptglab.com

This product is exclusively available under Proteintech Group brand and is not available to purchase from any other manufacturer.

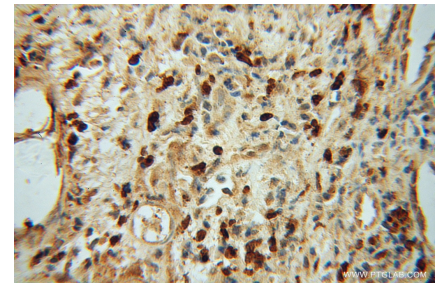
Données de validation sélectionnées



SH-SY5Y cells were subjected to SDS PAGE followed by western blot with 13658-1-AP (NR2C1 antibody) at dilution of 1:500 incubated at room temperature for 1.5 hours.



Immunohistochemical analysis of paraffin-embedded human prostate cancer using 13658-1-AP (NR2C1 antibody) at dilution of 1:50 (under 10x lens). Heat mediated antigen retrieved with Citric acid buffer, pH6.0.



Immunohistochemical analysis of paraffin-embedded human prostate cancer using 13658-1-AP (NR2C1 antibody) at dilution of 1:50 (under 40x lens). Heat mediated antigen retrieved with Citric acid buffer, pH6.0.