

À des fins de recherche uniquement

Anticorps Polyclonal de lapin anti-CHMP4B



Numéro de catalogue: 13683-1-AP

Phare

43 Publications

Informations de base

Numéro de catalogue: 13683-1-AP	Numéro d'acquisition GenBank: BC033859	Méthode de purification: Purification par affinité contre l'antigène
Taille: 150ul , Concentration: 3000 µg/ml by Nanodrop;	Identification du gène (NCBI): 128866	Dilutions recommandées: WB 1:200-1:1000 IHC 1:20-1:200 IF 1:50-1:500
Hôte: Lapin	Nom complet: chromatin modifying protein 4B	
Isotype: IgG	MW calculé: 224 aa, 25 kDa	
Immunogen Catalog Number: AG4544	MW observés: 25-33 kDa	

Applications

Applications testées:

IF, IHC, WB, ELISA

Demandes citées:

CoIP, IF, IP, WB

Spécificité de l'espèce:

Humain, rat, souris

Espèces citées:

canin, Humain, porc, rat, souris

Contrôles positifs:

WB : tissu cardiaque de souris, cellules HeLa, tissu cardiaque de rat

IHC : tissu de cancer de l'oesophage humain, tissu cardiaque humain, tissu de muscle squelettique humain

IF : cellules NIH/3T3, cellules C2C12, cellules HepG2

Remarque-IHC: il est suggéré de démasquer l'antigène avec un tampon de TE buffer pH 9,0; (*) À défaut, le démasquage de l'antigène peut être effectué avec un tampon citrate pH 6,0.

Informations générales

CHMP4B (charged multivesicular body protein 4b) is a human homologue of yeast Snf7p (also named Vps32p) and a member of CHMP family which is implicated in multivesicular body (MVB) sorting. The CHMP proteins are components of ESCRT-III (endosomal sorting complex required for transport III), a complex involved in degradation of surface receptor proteins and formation of endocytic multivesicular bodies. Among seven CHMP family members, only CHMP4 has been found to interact with Alix, a multifunctional adaptor protein in various cellular functions. This antibody is highly specific to the CHMP4B and it doesn't cross-react with other CHMPs as well as other CHMP4s (CHMP4A and CHMP4C). CHMP4B can be detected 25-33 kDa by post-translational modification (PMID:26490837).

Publications notables

Autrice	Pubmed ID	Journal	Application
Shiwei Liu	30232450	Nature	IF
Jalal M Kazan	34761192	iScience	WB,IF
Curtis B Read	36409075	mBio	IF

Stockage

Stockage:

Stocker à -20°C. Stable pendant un an après l'expédition.

Tampon de stockage:

PBS avec azoture de sodium à 0,02 % et glycérol à 50 % pH 7,3

L'aliquotage n'est pas nécessaire pour le stockage à -20C

*** Les 20ul contiennent 0,1% de BSA.

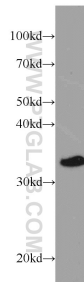
For technical support and original validation data for this product please contact:

T: 1 (888) 4PTGLAB (1-888-478-4522) (toll free in USA), or 1(312) 455-8498 (outside USA)

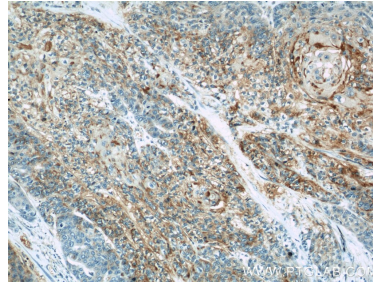
E: proteintech@ptglab.com
W: ptglab.com

This product is exclusively available under Proteintech Group brand and is not available to purchase from any other manufacturer.

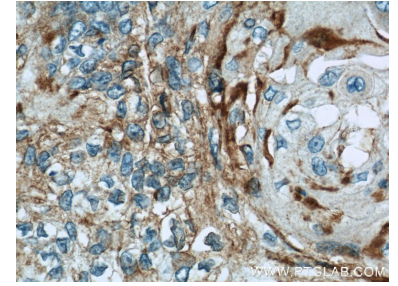
Données de validation sélectionnées



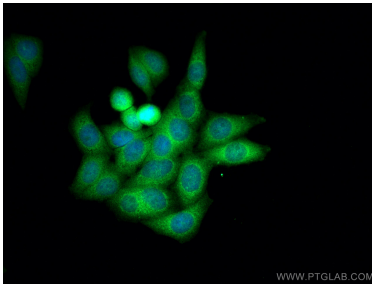
mouse heart tissue were subjected to SDS PAGE followed by western blot with 13683-1-AP (CHMP4B antibody) at dilution of 1:200 incubated at room temperature for 1.5 hours.



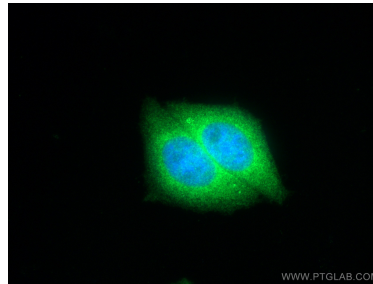
Immunohistochemical analysis of paraffin-embedded human oesophagus cancer using 13683-1-AP (CHMP4B antibody) at dilution of 1:50 (under 10x lens).



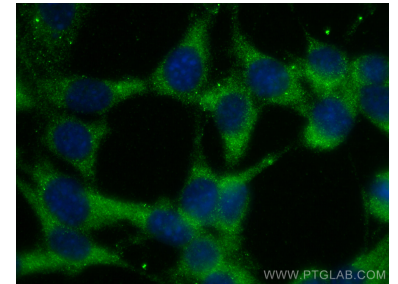
Immunohistochemical analysis of paraffin-embedded human oesophagus cancer using 13683-1-AP (CHMP4B antibody) at dilution of 1:50 (under 40x lens).



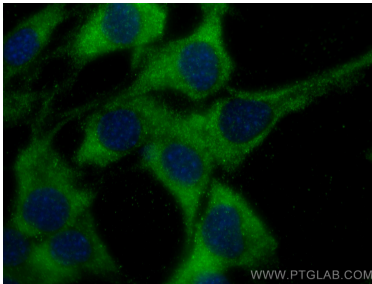
Immunofluorescent analysis of (4% PFA) fixed HepG2 cells using CHMP4B antibody (13683-1-AP) at dilution of 1:400 and CoraLite®488-Conjugated AffiniPure Goat Anti-Rabbit IgG(H+L).



Immunofluorescent analysis of (4% PFA) fixed HepG2 cells using CHMP4B antibody (13683-1-AP) at dilution of 1:400 and CoraLite®488-Conjugated AffiniPure Goat Anti-Rabbit IgG(H+L).



Immunofluorescent analysis of (-20°C Ethanol) fixed NIH/3T3 cells using CHMP4B antibody (13683-1-AP) at dilution of 1:200 and CoraLite®488-Conjugated AffiniPure Goat Anti-Rabbit IgG(H+L).



Immunofluorescent analysis of (-20°C Methanol) fixed C2C12 cells using CHMP4B antibody (13683-1-AP) at dilution of 1:200 and CoraLite®488-Conjugated AffiniPure Goat Anti-Rabbit IgG(H+L).