

À des fins de recherche uniquement

# Anticorps Polyclonal de lapin anti-NEDD4L



Numéro de catalogue: 13690-1-AP

Phare

29 Publications

## Informations de base

Numéro de catalogue:

13690-1-AP

Taille:

150ul, Concentration: 500 µg/ml by Nanodrop;

Hôte:

Lapin

Isotype:

IgG

Immunogen Catalog Number:

AG4565

Numéro d'acquisition GenBank:

BC032597

Identification du gène (NCBI):

23327

Nom complet:

neural precursor cell expressed, developmentally down-regulated 4-like

MW calculé

854 aa, 96 kDa

MW observés:

112 kDa, 125 kDa

Méthode de purification:

Purification par affinité contre l'antigène

Dilutions recommandées:

WB 1:1000-1:5000

IP 0.5-4.0 ug for IP and 1:200-1:1000 for WB

IHC 1:50-1:500

IF 1:20-1:200

## Applications

Applications testées:

IF, IHC, IP, WB, ELISA

Demandes citées:

CoIP, IF, IHC, IP, WB

Spécificité de l'espèce:

Humain, rat, souris

Espèces citées:

Humain, rat, souris

Contrôles positifs:

WB : cellules C6, cellules HT-1080, cellules PC-12, cellules PC-3

IP : cellules C6,

IHC : tissu de cancer de la prostate humain, tissu de cancer de l'estomac humain

IF : cellules PC-3,

**Remarque-IHC: il est suggéré de démasquer l'antigène avec un tampon de TE buffer pH 9,0; (\*) À défaut, 'le démasquage de l'antigène peut être 'effectué avec un tampon citrate pH 6,0.**

## Informations générales

NEDD4L (E3 ubiquitin-protein ligase NEDD4-like) is also named as KIAA0439, NEDL3, Nedd4-2. It accepts ubiquitin from an E2 ubiquitin-conjugating enzyme in the form of a thioester and then directly transfers the ubiquitin to targeted substrates and is the principal ubiquitin ligase that selectively targets activated SMAD2 and SMAD3 for destruction (PMID:19917253). Nedd4L binds the PY motif of ENaC COOH terminals and catalyzes ubiquitination of the NH2 terminus of the protein for subsequent degradation (PMID:18268134). It has some isoforms produced by alternative splicing. This antibody may have cross reaction with NEDD4 due to the high homology of the antigen.

## Publications notables

Autrice	Pubmed ID	Journal	Application
Siyuan Chen	30224386	J Exp Med	WB
Pan Wang	34582065	FASEB J	WB, IP
Gao Chengcheng C	21909941	Med Oncol	IHC

## Stockage

Stockage:

Stocker à -20°C. Stable pendant un an après l'expédition.

Tampon de stockage:

PBS avec azoture de sodium à 0,02 % et glycérol à 50 % pH 7,3

L'aliquotage n'est pas nécessaire pour le stockage à -20C

\*\*\* Les 20ul contiennent 0,1% de BSA.

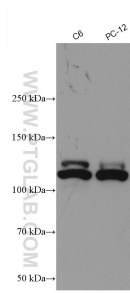
For technical support and original validation data for this product please contact:

T: 1 (888) 4PTGLAB (1-888-478-4522) (toll free in USA), or 1(312) 455-8498 (outside USA)

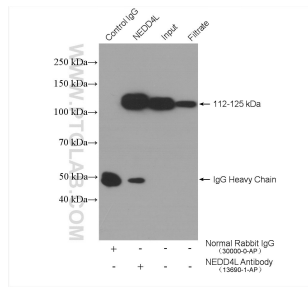
E: [proteintech@ptglab.com](mailto:proteintech@ptglab.com)  
W: [ptglab.com](http://ptglab.com)

This product is exclusively available under Proteintech Group brand and is not available to purchase from any other manufacturer.

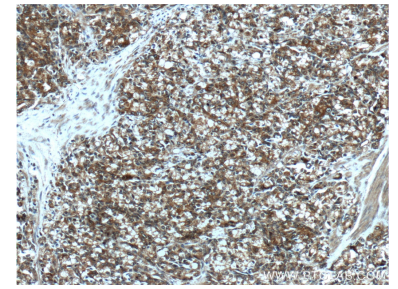
## Données de validation sélectionnées



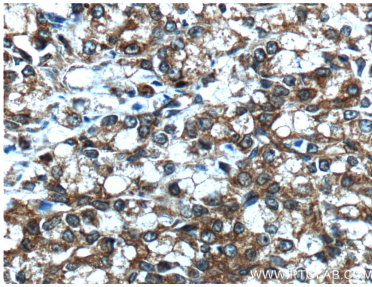
Various lysates were subjected to SDS PAGE followed by western blot with 13690-1-AP (NEDD4L antibody) at dilution of 1:2500 incubated at room temperature for 1.5 hours.



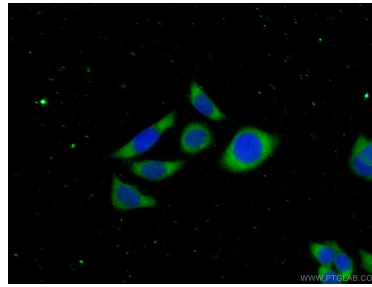
IP result of anti-NEDD4L (IP:13690-1-AP, 4ug; Detection:13690-1-AP 1:300) with C6 cells lysate 1000 ug.



Immunohistochemical analysis of paraffin-embedded human prostate cancer tissue slide using 13690-1-AP (NEDD4L Antibody) at dilution of 1:200 (under 10x lens).



Immunohistochemical analysis of paraffin-embedded human prostate cancer tissue slide using 13690-1-AP (NEDD4L Antibody) at dilution of 1:200 (under 40x lens).



Immunofluorescent analysis of (-20°C Ethanol) fixed PC-3 cells using 13690-1-AP (NEDD4L antibody) at dilution of 1:50 and Alexa Fluor 488-conjugated AffiniPure Goat Anti-Rabbit IgG(H+L).