

À des fins de recherche uniquement

Anticorps Polyclonal de lapin anti-TBX21, T-bet



Numéro de catalogue: 13700-1-AP

16 Publications

Informations de base

Numéro de catalogue:

13700-1-AP

Taille:

150ul, Concentration: 600 µg/ml by Nanodrop;

Hôte:

Lapin

Isotype:

IgG

Immunogen Catalog Number:

AG4618

Numéro d'acquisition GenBank:

BC039739

Identification du gène (NCBI):

30009

Nom complet:

T-box 21

MW calculé

535 aa, 58 kDa

MW observés:

60-62 kDa

Méthode de purification:

Purification par affinité contre l'antigène

Dilutions recommandées:

WB 1:500-1:1000

IP 0.5-4.0 ug for IP and 1:200-1:1000 for WB

IHC 1:50-1:500

Applications

Applications testées:

FC, IHC, IP, WB, ELISA

Demandes citées:

IF, IHC, WB

Spécificité de l'espèce:

Humain, souris

Espèces citées:

Humain, rat, souris

Contrôles positifs:

WB: cellules A549, cellules RAW 264.7, tissu de thymus de souris

IP: tissu de thymus de souris,

IHC: tissu d'amygdalite humain,

Remarque-IHC: il est suggéré de démasquer l'antigène avec un tampon de TE buffer pH 9,0; (*) À défaut, le démasquage de l'antigène peut être effectué avec un tampon citrate pH 6,0.

Informations générales

TBX21 is a transcription factor that drives the Th1 immune response primarily through promoting expression of the IFN- γ gene. TBX21 initiates TH1 lineage development from naive TH precursor cells both by activating TH1 genetic programs and by repressing the opposing TH2 programs. It has also been shown to play an influential role in inflammatory processes such as inflammatory bowel disease, autoimmune diseases such as rheumatoid arthritis, and immune-mediated conditions like asthma.

Publications notables

Autrice	Pubmed ID	Journal	Application
Shi-Jie Bi	34508802	J Ethnopharmacol	IHC
Raymond M Johnson	29158429	Infect Immun	WB
Weizhen Li	34790117	Front Pharmacol	WB

Stockage

Stockage:

Stocker à -20°C. Stable pendant un an après l'expédition.

Tampon de stockage:

PBS avec azoture de sodium à 0,02 % et glycérol à 50 % pH 7,3

L'aliquotage n'est pas nécessaire pour le stockage à -20C

*** Les 20ul contiennent 0,1% de BSA.

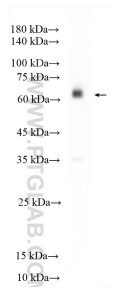
For technical support and original validation data for this product please contact:

T: 1 (888) 4PTGLAB (1-888-478-4522) (toll free in USA), or 1(312) 455-8498 (outside USA)

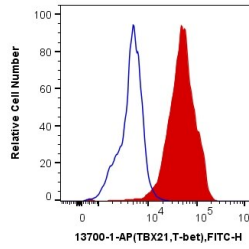
E: proteintech@ptglab.com
W: ptglab.com

This product is exclusively available under Proteintech Group brand and is not available to purchase from any other manufacturer.

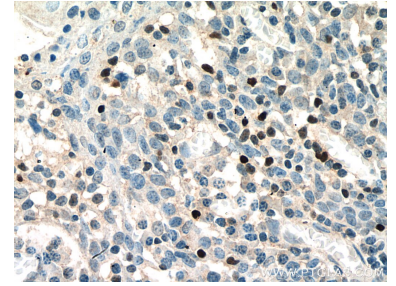
Données de validation sélectionnées



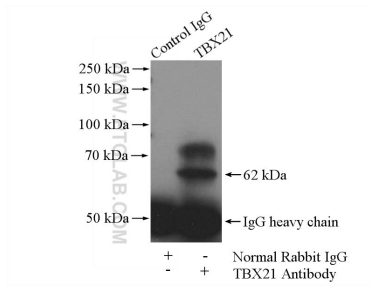
A549 cells were subjected to SDS PAGE followed by western blot with 13700-1-AP (TBX21,T-bet antibody) at dilution of 1:600 incubated at room temperature for 1.5 hours.



1×10^6 NK92 were intracellularly stained with 0.4 ug Anti-Human TBX21,T-bet (13700-1-AP) and CoraLite®488-Conjugated AffiniPure Goat Anti-Rabbit IgG(H+L) at dilution 1:1000 (red), or 0.4 ug x. Cells were fixed and permeabilized with Transcription Factor Staining Buffer Kit (PF00011).



Immunohistochemical analysis of paraffin-embedded human tonsillitis tissue slide using 13700-1-AP (TBX21,T-bet antibody) at dilution of 1:200 (under 40x lens). Heat mediated antigen retrieval with Tris-EDTA buffer (pH 9.0).



IP Result of anti-TBX21,T-bet (IP:13700-1-AP, 4ug; Detection:13700-1-AP 1:300) with mouse thymus tissue lysate 2800ug.