

À des fins de recherche uniquement

# Anticorps Polyclonal de lapin anti-LSS



Numéro de catalogue: 13715-1-AP

11 Publications

## Informations de base

<b>Numéro de catalogue:</b> 13715-1-AP	<b>Numéro d'acquisition GenBank:</b> BC035638	<b>Méthode de purification:</b> Purification par affinité contre l'antigène
<b>Taille:</b> 150ul , Concentration: 500 µg/ml by Nanodrop;	<b>Identification du gène (NCBI):</b> 4047	<b>Dilutions recommandées:</b> WB 1:1000-1:5000 IP 0.5-4.0 ug for IP and 1:500-1:1000 for WB IHC 1:20-1:200 IF 1:20-1:200
<b>Hôte:</b> Lapin	<b>Nom complet:</b> lanosterol synthase (2,3-oxidosqualene-lanosterol cyclase)	
<b>Isotype:</b> IgG	<b>MW calculé</b> 732 aa, 83 kDa	
<b>Immunogen Catalog Number:</b> AG4655	<b>MW observés:</b> 70-75 kDa	

## Applications

**Applications testées:**  
FC, IF, IHC, IP, WB, ELISA

**Demandes citées:**  
IHC, WB

**Spécificité de l'espèce:**  
Humain, rat, souris

**Espèces citées:**  
Humain, rat, souris

**Remarque-IHC: il est suggéré de démasquer l'antigène avec un tampon de TE buffer pH 9,0; (\*) À défaut, le démasquage de l'antigène peut être effectué avec un tampon citrate pH 6,0.**

**Contrôles positifs:**

**WB :** HT-1376 cells, cellules HeLa, cellules HepG2, cellules PC-3, cellules SH-SY5Y, tissu cérébral humain, tissu hépatique de souris, tissu pancréatique de souris, tissu testiculaire de souris

**IP :** cellules HepG2,

**IHC :** tissu hépatique humain, tissu testiculaire de souris

**IF :** cellules HepG2,

## Informations générales

LSS, also named as OSC, is lanosterol synthase which catalyzes the cyclization of (S)-2,3 oxidosqualene to lanosterol, a reaction that forms the sterol nucleus. LSS gene has three isoforms with MW 74 kDa and 82-85 kDa. This antibody can recognize all these three isoforms.

## Publications notables

Autrice	Pubmed ID	Journal	Application
Audrey Basque	36279966	Toxicol In Vitro	WB
Timothy J Grunkemeyer	34029588	J Biol Chem	WB
Ryan S Wible	29367259	Mol Pharmacol	WB

## Stockage

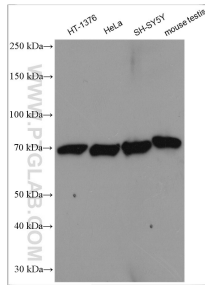
**Stockage:**  
Stocker à -20°C. Stable pendant un an après l'expédition.  
**Tampon de stockage:**  
PBS avec azoture de sodium à 0,02 % et glycérol à 50 % pH 7,3  
L'aliquotage n'est pas nécessaire pour le stockage à -20C

\*\*\* Les 20ul contiennent 0,1% de BSA.

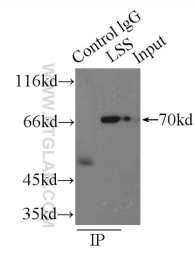
For technical support and original validation data for this product please contact:  
T: 1 (888) 4PTGLAB (1-888-478-4522) (toll free in USA), or 1(312) 455-8498 (outside USA)  
E: proteintech@ptglab.com  
W: ptglab.com

This product is exclusively available under Proteintech Group brand and is not available to purchase from any other manufacturer.

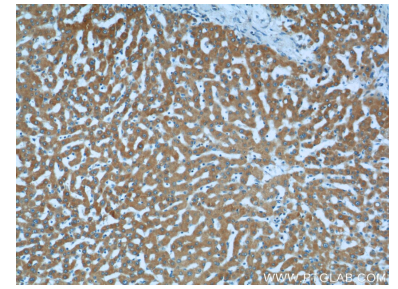
## Données de validation sélectionnées



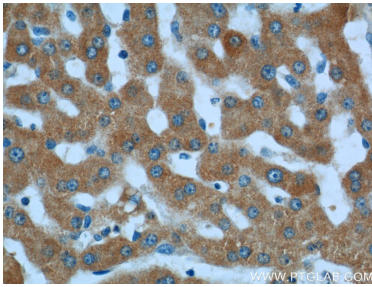
Various lysates were subjected to SDS PAGE followed by western blot with 13715-1-AP (LSS antibody) at dilution of 1:2500 incubated at room temperature for 1.5 hours.



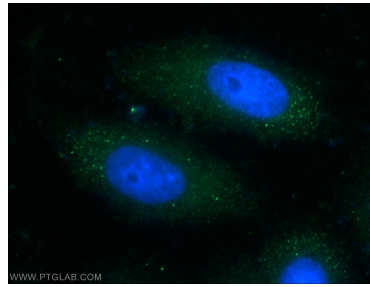
IP Result of anti-LSS (IP:13715-1-AP, 3ug; Detection:13715-1-AP 1:500) with HepG2 cells lysate 2900ug.



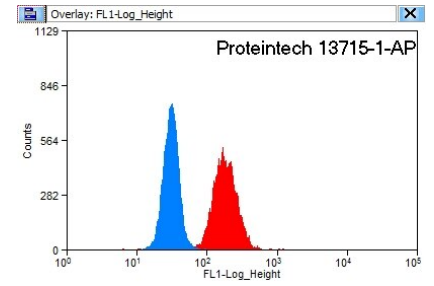
Immunohistochemical analysis of paraffin-embedded human liver tissue slide using 13715-1-AP (LSS Antibody) at dilution of 1:50 (under 10x lens).



Immunohistochemical analysis of paraffin-embedded human liver tissue slide using 13715-1-AP (LSS Antibody) at dilution of 1:50 (under 40x lens).



Immunofluorescent analysis of HepG2 cells using 13715-1-AP (LSS antibody) at dilution of 1:50 and Alexa Fluor 488-conjugated AffiniPure Goat Anti-Rabbit IgG(H+L).



1X10<sup>6</sup> HeLa cells were stained with 0.2ug LSS antibody (13715-1-AP, red) and control antibody (blue). Fixed with 90% MeOH blocked with 3% BSA (30 min). Alexa Fluor 488-conjugated AffiniPure Goat Anti-Rabbit IgG(H+L) with dilution 1:1500.