

À des fins de recherche uniquement

Anticorps Polyclonal de lapin anti-BOULE



Numéro de catalogue: 13720-1-AP

1 Publications

Informations de base

Numéro de catalogue:

13720-1-AP

Taille:

150ul, Concentration: 300 µg/ml by Nanodrop and 133 µg/ml by Bradford method using BSA as the standard;

Hôte:

Lapin

Isotype:

IgG

Immunogen Catalog Number:

AG4662

Numéro d'acquisition GenBank:

BC033674

Identification du gène (NCBI):

66037

Nom complet:

bol, boule-like (Drosophila)

MW calculé

283 aa, 31 kDa

MW observés:

38-42 kDa

Méthode de purification:

Purification par affinité contre l'antigène

Dilutions recommandées:

WB 1:5000-1:50000

IP 0.5-4.0 ug for IP and 1:500-1:2000 for WB

IHC 1:1000-1:4000

IF 1:50-1:500

Applications

Applications testées:

IF, IHC, IP, WB, ELISA

Demandes citées:

IHC

Spécificité de l'espèce:

Humain, rat, souris

Espèces citées:

Humain

Remarque-IHC: il est suggéré de démasquer l'antigène avec un tampon de TE buffer pH 9,0; (*) A défaut, 'le démasquage de l'antigène peut être 'effectué avec un tampon citrate pH 6,0.

Contrôles positifs:

WB : tissu testiculaire de souris, tissu testiculaire de rat

IP : tissu testiculaire de souris,

IHC : tissu testiculaire de souris, tissu ovarien de souris

IF : tissu testiculaire de souris,

Informations générales

BOULE, also called BOLL, belongs to the RRM DAZ family. BOULE has been identified as being involved in regulating the development and differentiation of germ cells and playing an essential role in infertility (PMID: 31683986).

BOULE is specifically expressed in testis, but not in early embryos, primordial germ cells, and spermatogonial cells. It is first expressed in the cytoplasm of spermatocytes and then persists through meiosis. BOULE has 5 isoforms with the molecular mass of 19 and 31-38 kDa. This antibody detects two bands in testis, the lower band of ~40 kDa in size corresponds to the predicted endogenous BOULE protein, while the upper band may be an isoform or posttranslationally modified version of the BOULE protein (PMID: 27632217).

Publications notables

Autrice	Pubmed ID	Journal	Application
Ru Yu	34904262	Andrologia	IHC

Stockage

Stockage:

Stocker à -20°C. Stable pendant un an après l'expédition.

Tampon de stockage:

PBS avec azoture de sodium à 0,02 % et glycérol à 50 % pH 7,3

L'aliquotage n'est pas nécessaire pour le stockage à -20C

*** Les 20ul contiennent 0,1% de BSA.

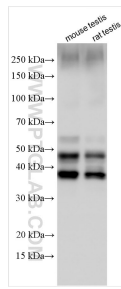
For technical support and original validation data for this product please contact:

T: 1 (888) 4PTGLAB (1-888-478-4522) (toll free in USA), or 1(312) 455-8498 (outside USA)

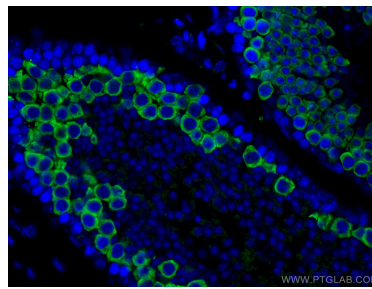
E: proteintech@ptglab.com
W: ptglab.com

This product is exclusively available under Proteintech Group brand and is not available to purchase from any other manufacturer.

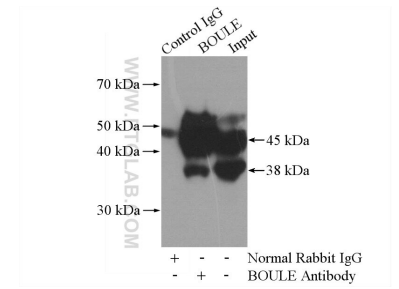
Données de validation sélectionnées



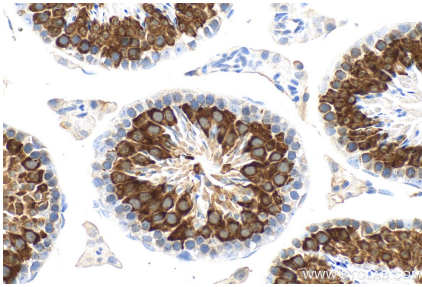
Various lysates were subjected to SDS PAGE followed by western blot with 13720-1-AP (BOULE antibody) at dilution of 1:10000 incubated at room temperature for 1.5 hours.



Immunofluorescent analysis of (4% PFA) fixed mouse testis tissue using BOULE antibody (13720-1-AP) at dilution of 1:200 and CoraLite® 488-Conjugated AffiniPure Goat Anti-Rabbit IgG(H+L).



IP Result of anti-BOULE (IP:13720-1-AP, 4ug; Detection:13720-1-AP 1:1000) with mouse testis tissue lysate 4000ug.



Immunohistochemical analysis of paraffin-embedded mouse testis tissue slide using 13720-1-AP (BOULE antibody) at dilution of 1:2000 (under 40x lens). Heat mediated antigen retrieval with Tris-EDTA buffer (pH 9.0).