

À des fins de recherche uniquement

Anticorps Polyclonal de lapin anti-TTF2



Numéro de catalogue: 13722-1-AP

3 Publications

Informations de base

Numéro de catalogue:

13722-1-AP

Taille:

150ul, Concentration: 1100 µg/ml by Nanodrop and 520 µg/ml by Bradford method using BSA as the standard;

Hôte:

Lapin

Isotype:

IgG

Immunogen Catalog Number:

AG4671

Numéro d'acquisition GenBank:

BC030058

Identification du gène (NCBI):

8458

Nom complet:

transcription termination factor, RNA polymerase II

MW calculé

1162 aa, 129 kDa

MW observés:

130 kDa

Méthode de purification:

Purification par affinité contre l'antigène

Dilutions recommandées:

WB 1:2000-1:10000

IP 0.5-4.0 ug for IP and 1:500-1:1000 for WB

IHC 1:20-1:200

IF 1:20-1:200

Applications

Applications testées:

IF, IHC, IP, WB, ELISA

Demandes citées:

IHC, WB

Spécificité de l'espèce:

Humain, rat, souris

Espèces citées:

Humain, rat

Remarque-IHC: il est suggéré de démasquer l'antigène avec un tampon de TE buffer pH 9,0; (*) À défaut, 'le démasquage de l'antigène peut être 'effectué avec un tampon citrate pH 6,0.

Contrôles positifs:

WB : cellules A2780, cellules HeLa, cellules Jurkat

IP : cellules A2780,

IHC : tissu de tumeur ovarienne humain,

IF : cellules HeLa,

Informations générales

Transcription elongation is a key target for control of eukaryotic gene expression. After initiating from a promoter, the RNA polymerase II elongation complex is subjected to a block to elongation by the action of components of N-TEF (negative transcription elongation factor) [PMID: 9748214]. Transcription termination factor 2 (TTF2) is a DsDNA-dependent ATPase that acts as a transcription termination factor by coupling ATP hydrolysis with removal of RNA polymerase II from the DNA template. It also contribute to mitotic transcription repression, and involved in pre-mRNA splicing [PMID:15125840, 12927788].

Publications notables

| Autrice | Pubmed ID | Journal | Application |
|----------------|-----------|-------------------|-------------|
| Mei Ha | 33250241 | Sci Total Environ | WB |
| Weizhu Zhao | 37225691 | Nat Commun | IHC |
| Brannan Kris K | 22483619 | Mol Cell | WB |

Stockage

Stockage:

Stocker à -20°C. Stable pendant un an après l'expédition.

Tampon de stockage:

PBS avec azoture de sodium à 0,02 % et glycérol à 50 % pH 7,3

L'aliquotage n'est pas nécessaire pour le stockage à -20C

*** Les 20ul contiennent 0,1% de BSA.

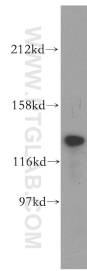
For technical support and original validation data for this product please contact:

T: 1 (888) 4PTGLAB (1-888-478-4522) (toll free in USA), or 1(312) 455-8498 (outside USA)

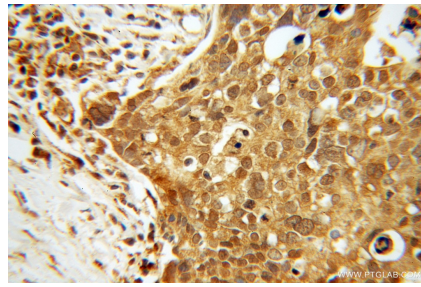
E: proteintech@ptglab.com
W: ptglab.com

This product is exclusively available under Proteintech Group brand and is not available to purchase from any other manufacturer.

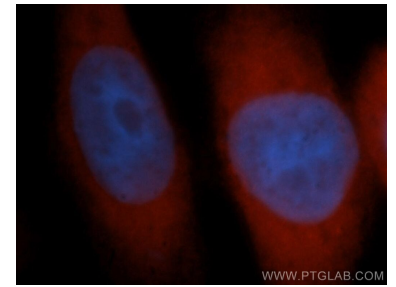
Données de validation sélectionnées



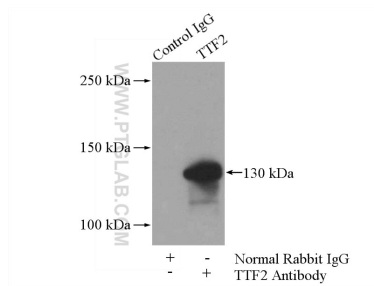
A2780 cells were subjected to SDS PAGE followed by western blot with 13722-1-AP (TTF2 antibody) at dilution of 1:500 incubated at room temperature for 1.5 hours.



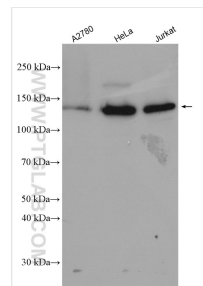
Immunohistochemical analysis of paraffin-embedded human ovary tumor using 13722-1-AP (TTF2 antibody) at dilution of 1:100 (under 40x lens).



Immunofluorescent analysis of HeLa cells, using TTF2 antibody 13722-1-AP at 1:50 dilution and Rhodamine-labeled goat anti-rabbit IgG (red). Blue pseudocolor = DAPI (fluorescent DNA dye).



IP Result of anti-TTF2 (IP:13722-1-AP, 4ug; Detection:13722-1-AP 1:500) with A2780 cells lysate 840ug.



Various lysates were subjected to SDS PAGE followed by western blot with 13722-1-AP (TTF2 antibody) at dilution of 1:5000 incubated at room temperature for 1.5 hours.