

À des fins de recherche uniquement

# Anticorps Polyclonal de lapin anti-GRK3



Numéro de catalogue: 13727-1-AP

## Informations de base

<b>Numéro de catalogue:</b> 13727-1-AP	<b>Numéro d'acquisition GenBank:</b> BC036797	<b>Méthode de purification:</b> Purification par affinité contre l'antigène
<b>Taille:</b> 150ul, Concentration: 500 µg/ml by Nanodrop and 333 µg/ml by Bradford method using BSA as the standard;	<b>Identification du gène (NCBI):</b> 157	<b>Dilutions recommandées:</b> WB 1:1000-1:4000 IHC 1:50-1:500
<b>Hôte:</b> Lapin	<b>Nom complet:</b> adrenergic, beta, receptor kinase 2	
<b>Isotype:</b> IgG	<b>MW calculé:</b> 688 aa, 80 kDa	
<b>Immunogen Catalog Number:</b> AG4685	<b>MW observés:</b> 70 kDa, 90 kDa	

## Applications

### Applications testées:

IHC, WB, ELISA

### Spécificité de l'espèce:

Humain, rat, souris

**Remarque-IHC: il est suggéré de démasquer l'antigène avec un tampon de TE buffer pH 9.0; (\*) À défaut, le démasquage de l'antigène peut être effectué avec un tampon citrate pH 6,0.**

### Contrôles positifs:

WB : cellules K-562, cellules HL-60

IHC : tissu cérébral de souris, tissu de côlon humain

## Informations générales

GRK3 (G protein coupled receptor kinase 3), also known as ADRBK2 or BARK2, belongs to the G protein coupled receptor kinases (GRKs) family. GRKs are serine/threonine kinases that regulate a large and diverse class of G-protein coupled receptors (GPCRs). GRKs have been shown to play a critical role in the outcome of a variety of physiological and pathophysiological processes including chemotaxis, signaling, migration, inflammatory gene expression and so on (PMID: 28950947, 29483837). GRK3 was identified as a negative regulator of CXCL12/CXCR4 signaling, and has also been shown to be overexpressed in human prostate cancer and found to promote tumor growth and metastasis by enhancing angiogenesis (PMID: 23935208, 24434559). GRK3 has a molecular mass of 75-80 kDa, and also can be ubiquitinated (PMID: 20596523).

## Stockage

### Stockage:

Stocker à -20°C. Stable pendant un an après l'expédition.

### Tampon de stockage:

PBS avec azoture de sodium à 0,02 % et glycérol à 50 % pH 7,3

L'aliquotage n'est pas nécessaire pour le stockage à -20C

\*\*\* Les 20ul contiennent 0,1% de BSA.

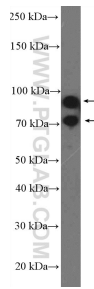
For technical support and original validation data for this product please contact:

T: 1 (888) 4PTGLAB (1-888-478-4522) (toll free in USA), or 1(312) 455-8498 (outside USA)

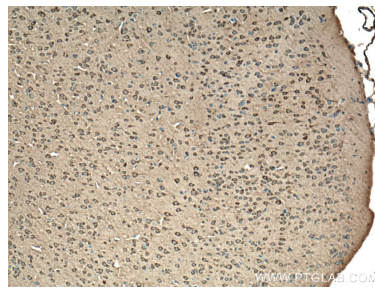
E: [proteintech@ptglab.com](mailto:proteintech@ptglab.com)  
W: [ptglab.com](http://ptglab.com)

This product is exclusively available under Proteintech Group brand and is not available to purchase from any other manufacturer.

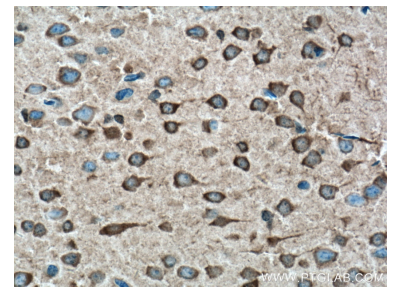
## Données de validation sélectionnées



K-562 cells were subjected to SDS PAGE followed by western blot with 13727-1-AP (GRK3 antibody at dilution of 1:2000 incubated at room temperature for 1.5 hours.



Immunohistochemical analysis of paraffin-embedded mouse brain tissue slide using 13727-1-AP (GRK3 antibody) at dilution of 1:200 (under 10x lens. Heat mediated antigen retrieval with Tris-EDTA buffer (pH 9.0).



Immunohistochemical analysis of paraffin-embedded mouse brain tissue slide using 13727-1-AP (GRK3 antibody) at dilution of 1:200 (under 40x lens. Heat mediated antigen retrieval with Tris-EDTA buffer (pH 9.0).